

Number: 202000006986

Recorded: 10/16/2019 at 10:14:20.0 AM

County Recording Fee: \$7.00

Iowa E-Filing Fee: \$3.00

Combined Fee: \$10.00

Revenue Tax:

Sandie L. Smith, RECORDER

Black Hawk County, Iowa

Prepared by & Return to: Herold - Reicks Surveying, 2206 East Bremer Avenue, Waverly, IA 50677, Ph. 319-483-5187

United States Public Land Survey Corner Certificate

Land Survey Monument situated in
Section **2**, Township **90** North, Range **11** West of the Fifth Principal Meridian, **Black Hawk** County, Iowa.
Not on file in the County Recorder's office.

This certificate is being prepared in compliance with Iowa Code Chapter 355.11 because:

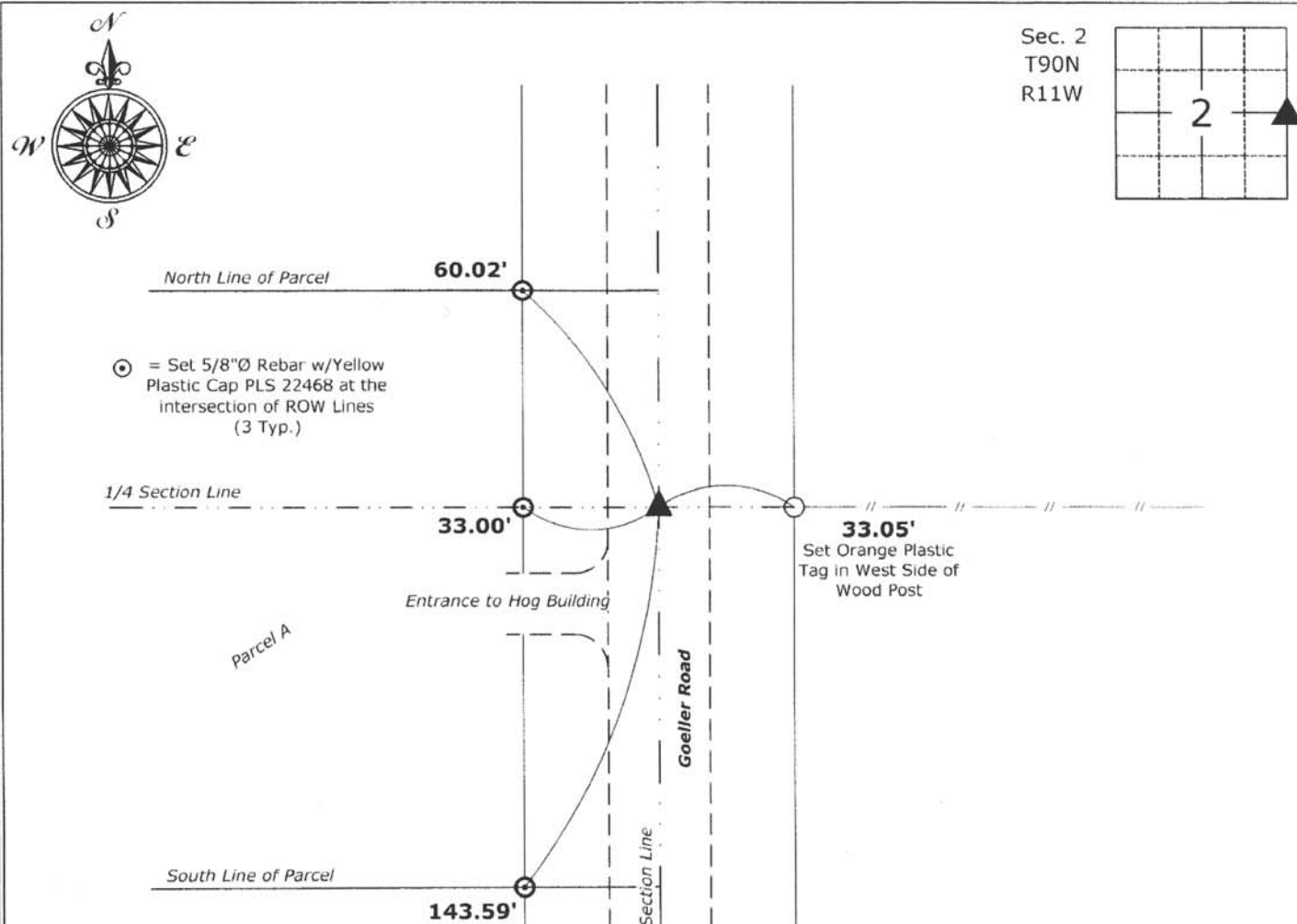
- ☒ There is no certificate on file for this corner.
☐ There are no longer three valid ties of record.
☐ There are changes to reference ties of record.
☐ There is change of monumentation of record.
☐ To clarify description of record monument (ties).

Monument Description and Remarks:

East 1/4 Corner: Found Base of Broken off Standard Concrete Monument, removed and Set 5/8"Ø Rebar w/2"Ø Aluminum Cap PLS 22468 at the Center of the Base with information obtained from the County Engineers office.

Plan View

(Show a minimum of three reference ties to durable physical objects, relevant monuments and physical conditions that will enable recovery of the corner.)



East 1/4 Corner of Section 2-90-11
Set 5/8"Ø Rebar w/2"Ø Aluminum Cap PLS 22468



I hereby certify that this land surveying document was prepared and the related survey work was performed by me or under my direct personal supervision and that I am a duly licensed Land Surveyor under the laws of the State of Iowa.

Isaiah M. Reicks 10-15-19
Isaiah M. Reicks Date:

License number 22468

My license renewal date is December 31, 2019.

My license renewal date is December 31, 2020.
 Sheets covered by this seal: Individual sheet only

List Corner to be Indexed

Corner	Section	Twp.	Range
E 1/4	2	90	11

Project Number: 2019-569

FB: Black Hawk 10, Pgs. 38 & 41