

Jeffrey P. Helland, 1107 Technology Parkway, Cedar Falls, Iowa 50613-6951, (319)-266-0161

UNITED STATES PUBLIC LAND SURVEY CORNER CERTIFICATE OF

LAND SURVEY MONUMENTS SITUATED IN SECTION NO. 1, TOWNSHIP NO. 90 NORTH, RANGE
NO. 11 WEST OF THE FIFTH PRINCIPAL MERIDIAN, BLACK HAWK COUNTY, IOWA.

PREVIOUSLY RECORDED IN _____

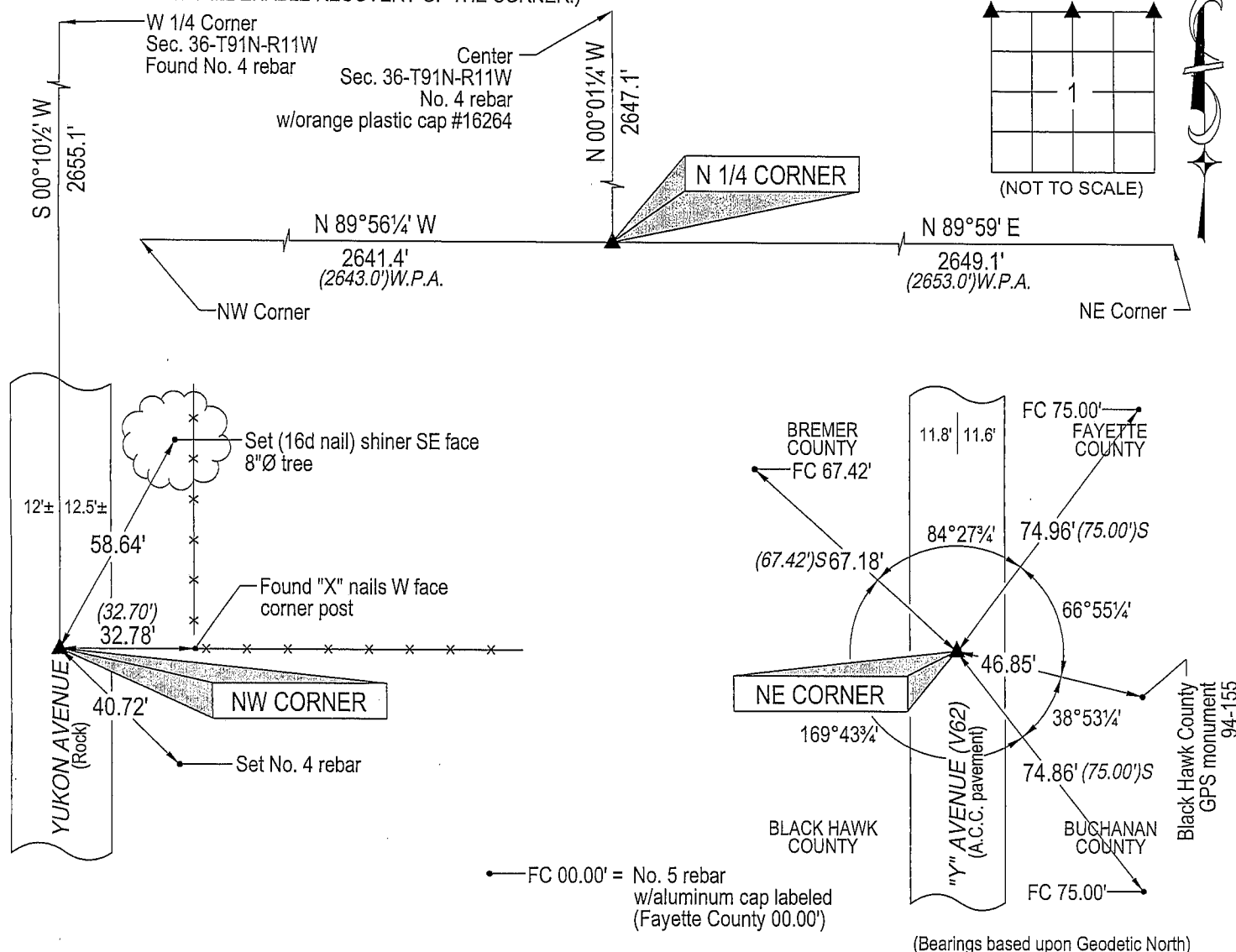
(SHOW REASON FOR PREPARING THIS CERTIFICATE, THE EVIDENCE AND DETAILED PROCEDURES USED IN ESTABLISHING THE
CORNER POSITIONS AND MONUMENTATION FOUND OR PLACED.)

MONUMENT DESCRIPTION AND REMARKS:

- No corner certificates on file in Black Hawk County. Survey completed in the N 1/2 SE 1/4 of Sec. 36-T91N-R11W.
- NW CORNER: Found concrete monument w/brass cap 0.4' deep from one remaining Bremer County Engineer reference tie, set No. 4 rebar on North side for magnetic detection.
 - N 1/4 CORNER: All Black Hawk County Engineer reference ties (no date) obliterated (in cultivated field). Started excavation using W.P.A. chaining notes. Found broken off concrete monument 1.5' deep. Monument leaning Southerly (10° zenith), straightened to vertical position. Cut "X" on top and drilled 1/4" hole to mark center point, Set No. 4 rebar on North side for magnetic detection.
 - NE CORNER: USPLSCC File No. 2003 4754 (Fayette County) calls for "Found 2"Ø Aluminum cap stamped Black Hawk Co." Found said 2"Ø Aluminum cap labeled "Black Hawk Co. Land Corner" 0.2' below surface of A.C.C. pavement.

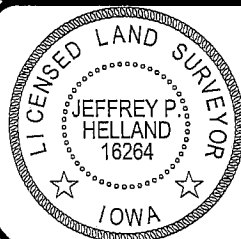
PLAN VIEW

(SHOW A MINIMUM OF THREE REFERENCE TIES TO DURABLE PHYSICAL OBJECTS, RELEVANT MONUMENTS AND PHYSICAL
CONDITIONS THAT WILL ENABLE RECOVERY OF THE CORNER.)



HELLAND ENGINEERING & SURVEYING, LTD.
1107 Technology Parkway
Cedar Falls, Iowa 50613-6951
(319)-266-0161

shiner = 8d nail & 1 15/16"Ø metal shiner
(00.00') S Sloped chain
(00') Recorded As File Name: 05-121c4.dwg



I hereby certify that this land surveying document was prepared
and the related survey work was performed by me or under my
direct personal supervision and that I am a duly licensed Land
Surveyor under the laws of the State of Iowa.

Jeffrey P. Helland 2/28/05
Jeffrey P. Helland
License Number 16264
My license renewal date is December 31, 2005.
All pages or sheets are covered by this seal except:

LIST CORNERS TO BE INDEXED

CORNER	SECTION	TOWNSHIP	RANGE
NW CORNER	1	90N	11W
N 1/4 CORNER	1	90N	11W
NE CORNER	1	90N	11W

Rec