



Doc ID: 004646520001 Type: GEN
 Kind: CORNER
 Recorded: 12/02/2011 at 10:31:19 AM
 Fee Amt: \$7.00 Page 1 of 1
 Black Hawk County Iowa
 JUDITH A MCCARTHY RECORDER

File **2012-00010072**

Recorded By: Michael R. Fagle, P.L.S.

AECOM, 501 Sycamore St., Suite 222, Waterloo, Iowa 50703

1-319-232-6531

UNITED STATES PUBLIC LAND SURVEY CORNER CERTIFICATE OF

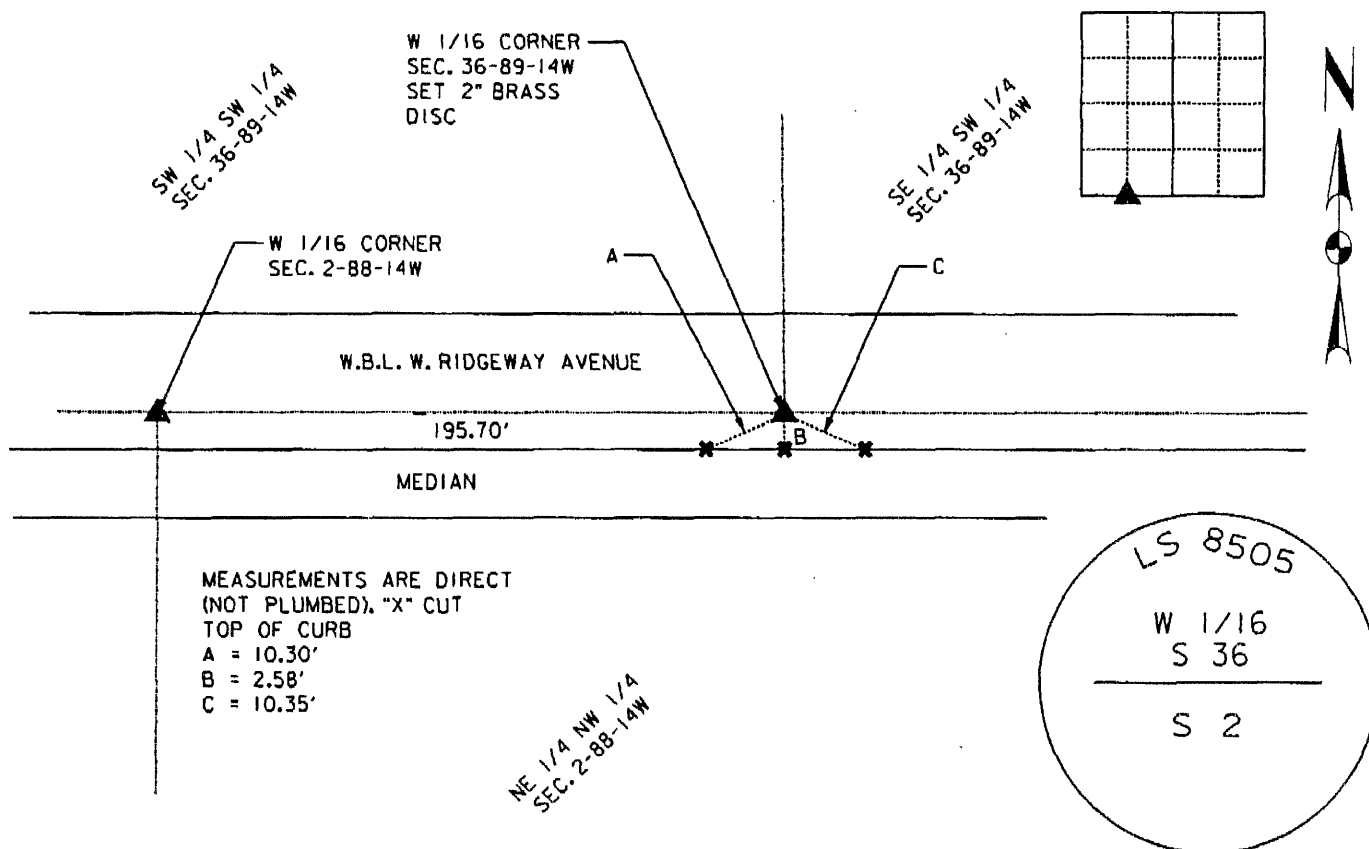
Land Survey Monuments situated in Section 36, Township 89 North,
 Range 14 West, of the Fifth Principal Meridian, Black Hawk
 County, Iowa. Previously recorded in No Record Ties
 in County Engineer's Office. (Book, Page, Document Number, etc.)

(Show reason for preparing this certificate, the evidence and detailed procedures used in establishing the corner positions and monumentation found or placed.)

Monument Description and Remarks: After the construction was completed on
the City of Cedar Falls Ridgeway Avenue Reconstruction Project (RC-000-1913)
a 2" Brass Disc with Magnetic Washer was set from coordinates of corner in
Plan Set. Stamped LS 8505 - W 1/16 S 36 - S 2.

PLAN - VIEW

(Show a minimum of three reference ties to durable physical objects, relevant monuments and physical conditions that will enable recovery of the corner.)



| | <p>I hereby certify that this Land Surveying document was prepared by me or under my direct personal supervision and that I am a duly Licensed Land Surveyor under the laws of the State of Iowa.</p> <p><u>Michael R. Fagle</u> <u>12-01-2011</u> Date</p> <p>License number 8505</p> <p>My license renewal date is December 31, 2012</p> <p>Pages or sheets covered by this seal:</p> <p style="text-align: center;">THIS SHEET</p> | <p style="text-align: center;">List Corners to be Indexed</p> <table border="1" style="width: 100%; border-collapse: collapse;"> <thead> <tr> <th style="text-align: left;">Corners</th> <th style="text-align: left;">Section</th> <th style="text-align: left;">Twp</th> <th style="text-align: left;">Range</th> </tr> </thead> <tbody> <tr> <td>WEST 1/16 Corner</td> <td>36</td> <td>T 89 N</td> <td>R 14 W</td> </tr> </tbody> </table> | Corners | Section | Twp | Range | WEST 1/16 Corner | 36 | T 89 N | R 14 W |
|------------------|--|---|---------|---------|-----|-------|------------------|----|--------|--------|
| Corners | Section | Twp | Range | | | | | | | |
| WEST 1/16 Corner | 36 | T 89 N | R 14 W | | | | | | | |