

WAYNE CLAASSEN ENGINEERING AND SURVEYING, INC.
P.O. BOX 898 WATERLOO, IOWA 50704-0898

PHONE: (VOICE) 319-235-6294
(FAX) 319-235-0028

UNITED STATES PUBLIC LAND SURVEY CORNER CERTIFICATE

Land Survey Monuments situated in Section 36, Township 89 North, Range 14 West, of the Fifth Principal Meridian, Black Hawk County, Iowa.

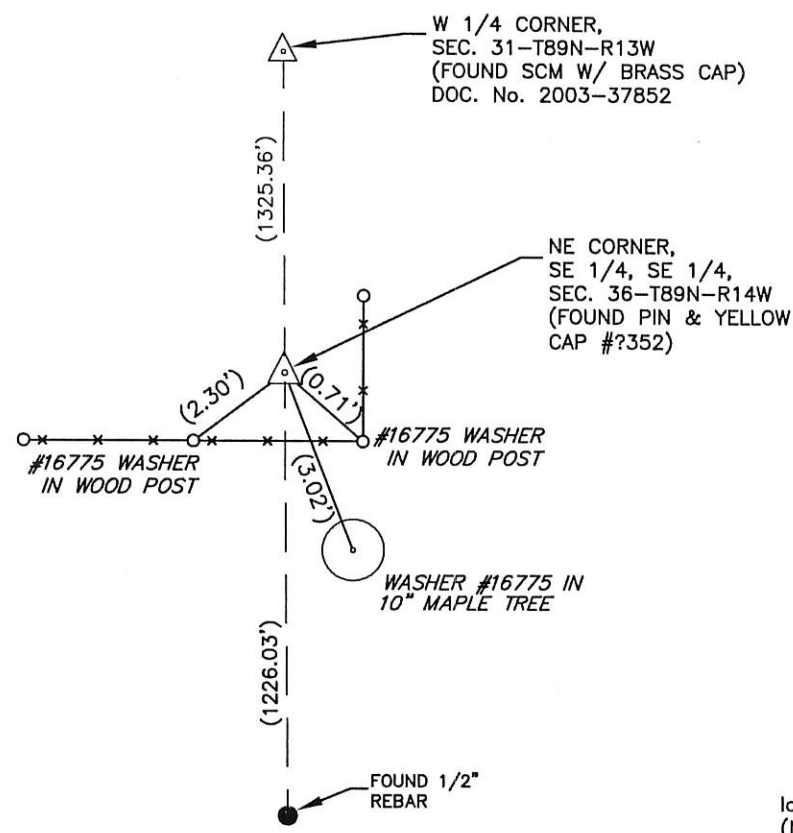
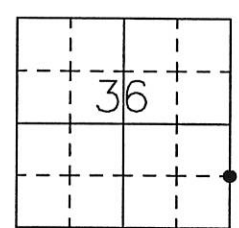
Previously recorded in (book, page, document number, etc.) in County Recorder's Office.

Monument Description and Remarks

No ties were found in the Black Hawk County Engineer's Office. Schenk Engineering Survey signed Oct. 8, 1974, shows found iron stake at corner. Found pin & yellow cap #?352 at reasonable midpoint between the West 1/4 Quarter corner and the Southeast corner.

PLAN - VIEW

- Reason for filing certificate:
- ☒ There is no certificate on file with the Recorder's Office.
 - ☐ Accepts corner position which differs from the one shown in above document.
 - ☐ The corner monument was replaced or modified.
 - ☐ The reference ties in above document were incorrect or missing.



RIDGEWAY AVE.

Iowa State Plane Coordinate System
(North Zone)
N= 3637267.89
E= 5208286.87
(For reference only)

714-64

I hereby certify that this land surveying document was prepared and the related survey work was performed by me or under my direct personal supervision and that I am a duly Licensed Land Surveyor under the laws of the State of Iowa.

Signature: David L. Scheil, L.S.

Date: April 12, 2016 Lic. No. 16775

Pages or Sheets Covered by this Seal: THIS SHEET ONLY.

My license renewal date is December 31, 2016

SEAL

List Corners to be Indexed

Corners	Section	Twp	Range
NE CORNER, SE 1/4 SE 1/4,	36	89 N	14 W
NW CORNER, SW 1/4 SW 1/4,	31	89 N	13 W

