



Doc ID: 005284360001 Type: GEN  
Kind: CORNER  
Recorded: 09/19/2013 at 08:49:41 AM  
Fee Amt: \$7.00 Page 1 of 1  
Black Hawk County Iowa  
JUDITH A MCCARTHY RECORDER

File 2014-00006382

\* WAYNE CLAASSEN ENGINEERING AND SURVEYING, INC.  
env P.O. BOX 898 WATERLOO, IOWA 50704-0898

PHONE: (VOICE) 319-235-6294  
(FAX) 319-235-0028

## UNITED STATES PUBLIC LAND SURVEY CORNER CERTIFICATE

Land Survey Monuments situated in Section 36, Township 89 North, Range 14 West, of the Fifth Principal Meridian, Black Hawk County, Iowa.

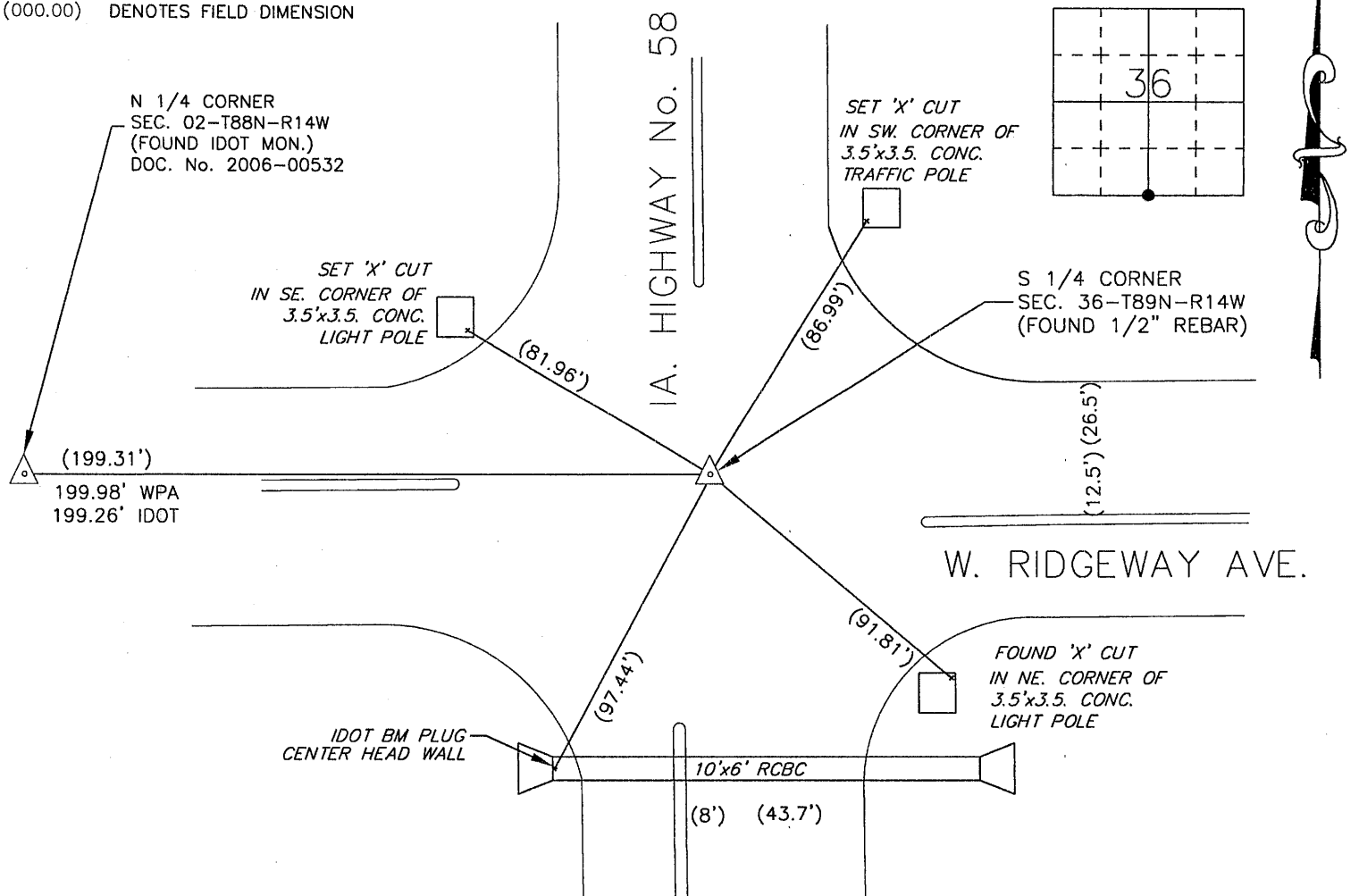
Previously recorded in \_\_\_\_\_ in County Recorder's Office.  
(book, page, document number, etc.)

### Monument Description and Remarks

The following note was from the WPA field notes (dated Oct. 12, 1938) found in the Black Hawk County Engineer's Office: "At location indicated by random line dug hole 5' square 18" deep. Found Iron pipe 1/2"x18" long and wood stake 1"x3"x16". Plumbed to high point of pipe. Lowered all evidence in place and set concrete monument with cap marked 36/1." The IDOT Land Corner Survey, Project No. F-U-UG-520-6(2)--27-07 (Dated march-April 1971) shows a found valve. Found 1/2" rebar that fits reasonably with tie to the North 1/4 Corner of Section 2-88-14. This certificate is being filed because there is no certificate on file.

000.00 DENOTES RECORD DIMENSION  
(000.00) DENOTES FIELD DIMENSION

### PLAN - VIEW



674-70

I hereby certify that this land surveying document was prepared and the related survey work was performed by me or under my direct personal supervision and that I am a duly Licensed Land Surveyor under the laws of the State of Iowa.

Signature: David L. Scheil, L.S.

Date: SEPT. 18, 2013 Lic. No. 16775

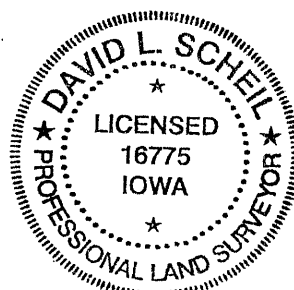
Pages or Sheets Covered by this Seal: THIS SHEET ONLY.

My license renewal date is December 31, 2014

SEAL

### List Corners to be Indexed

Corners	Section	Twp	Range
S 1/4 CORNER,	36	89 N	14 W



21.00' m

(7.00)

1