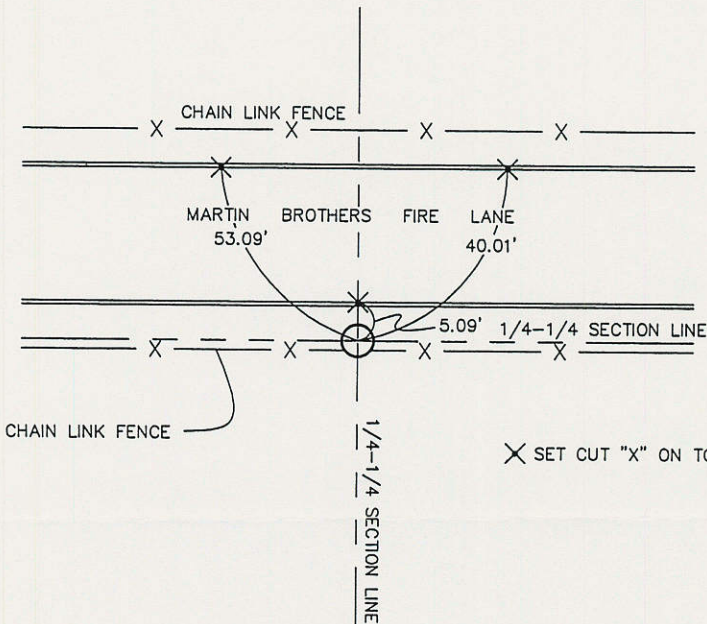


COPY

Prepared by/Return to: FEHR GRAHAM, 128 S. Vine Street, West Union, IA 52175 - Ph. (563)422-5131

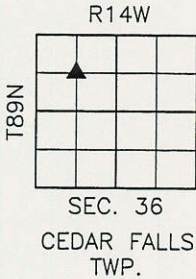
UNITED STATES PUBLIC LAND SURVEY CORNER CERTIFICATE
BLACK HAWK COUNTY, IOWA
SECTION 36-T89N-R14W

SW CORNER
NE1/4-NW1/4 OF
SEC. 36-89-14



PREVIOUSLY RECORDED:
NO PREVIOUS CERTIFICATE OF RECORD FOUND.
PURPOSE OF CERTIFICATE:
FOUND MONUMENT AT APPROXIMATE DISTANCES CALLED
FOR ON THE FINAL PLAT OF CEDAR FALLS INDUSTRIAL
PARK.

MONUMENT DESCRIPTION AND ESTABLISHMENT:
FOUND 1/2"Ø REBAR



CORNERS TO BE INDEXED

CORNER	SECTION	TOWNSHIP	RANGE
SW of NE1/4-NW1/4	36	89N	14W



I hereby certify that this land surveying document was prepared and the related survey work was performed by me or under my direct personal supervision and that I am a duly licensed Land Surveyor under the laws of the State of Iowa.

Lyle G. Tekippe 1-16-18
Lyle G. Tekippe, P.E. & P.L.S. Date
License Number: 7060
My license renewal date is December 31, 2018.
Sheets covered by this seal: Sheet 1

FEHR GRAHAM
ENGINEERING & ENVIRONMENTAL
© 2017 FEHR GRAHAM

ILLINOIS
IOWA
WISCONSIN

G:\C3D\15\15-067\36-89-14G.dwg

FLD BK: WU-PJM-2 PG: 71

JOB NUMBER:
15-067

SHEET NUMBER:
1 of 1