

PROOF

FILED FOR RECORD JUN 16, 2003, AT 11:00A. M. FEE 1-5.00/.

COMPARED

Clapsaddle-Garber Associates

BLACK HAWK COUNTY RECORDER

CLAPSADDLE-GARBER ASSOCIATES PO BOX 754 MARSHALLTOWN IA 50158

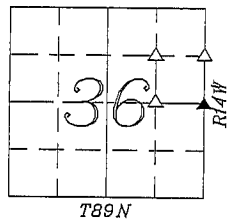
PREPARED BY - CLAPSADDLE-GARBER ASSOCIATES, INC., 16 E MAIN ST., PO BOX 754, MARSHALLTOWN, IOWA 50158 - PHONE 641-752-6701

UNITED STATES PUBLIC LAND SURVEY CORNER CERTIFICATE

OF

Land Survey Monuments situated in Section 36, Township 89N, Range 14W, of the Fifth Principal Meridian, BLACK HAWK County, Iowa.
Previously recorded in Book _____, Page _____

CORNERS WERE SET FOR SURVEY OF PARCEL "A" IN THE NORTHEAST 1/4 OF SECTION 36.

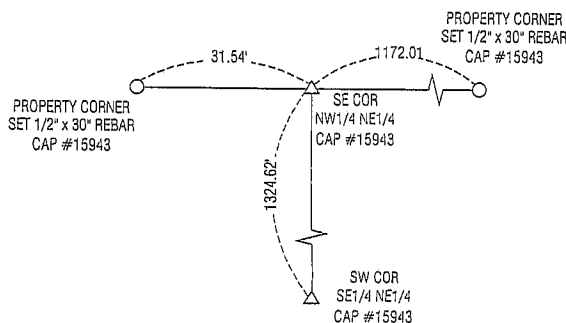


PLAN-VIEW

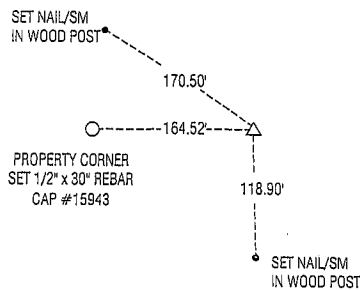
NO SCALE

LEGEND:

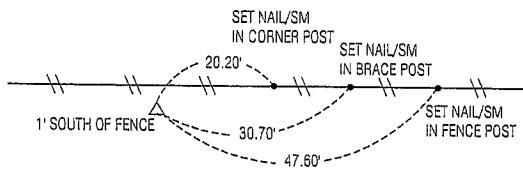
- ▲ GOVERNMENT CORNER MONUMENT FOUND
- △ GOVERNMENT CORNER MONUMENT SET 1/2"x30" REBAR w/ORANGE ID CAP #15943
- EXISTING FENCE



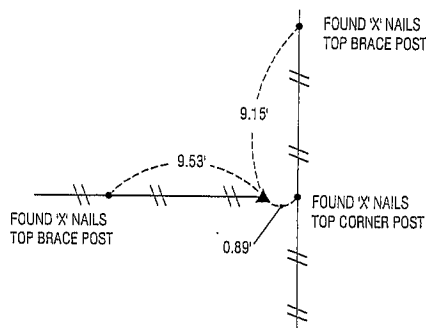
SET 1/2" x 30" REBAR
CAP # 15943
SOUTHEAST CORNER
NW1/4 NE1/4
SECTION 36-89-14



SET 1/2" x 30" REBAR
CAP # 15943
SOUTHEAST CORNER
NE1/4 NE1/4
SECTION 36-89-14



SET 1/2" x 30" REBAR
CAP # 15943
SOUTHWEST CORNER
SE1/4 NE1/4
SECTION 36-89-14



FOUND CONCRETE MONUMENT
w/BRASS CAP AND CUT "X"
EAST 1/4 CORNER
SECTION 36-89-14



Clapsaddle-Garber Associates, Inc
16 East Main Street
Marshalltown, Iowa 50158
Ph 641 752-6701
www.cgaconsultants.com

DRAWN

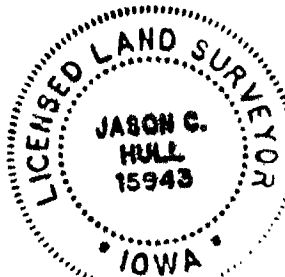
DKM

PROJECT NO.

73521.05

List Corners to be Indexed

Corners	Section	Township	Range
SE COR NW1/4 NE1/4	36	89N	14W
SE COR NE1/4 NE1/4	36	89N	14W
SW COR SE1/4 NE1/4	36	89N	14W
E1/4 COR	36	89N	14W



I hereby certify that this land surveying document was prepared and the related survey work was performed by me or under my direct personal supervision and that I am a duly Licensed Professional Land Surveyor under the laws of the State of Iowa.

Jason C. Hull
Jason C. Hull, P.L.S.

date

Iowa License No. 15943

My License Renewal Date is Dec. 31, 2004.