

INDEX

BLACK HAWK COUNTY, IOWA:SS

FEE BOOK # 2003 10040

PROOF

FILED FOR RECORD

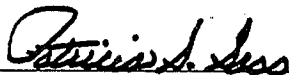
OCT 15

2002

AT 11:00A.M.

FEE 1-5.00X

COMPARED



BLACK HAWK COUNTY RECORDER

SCHENK ENGINEERING COMPANY

PREPARED BY: SCHENK ENGINEERING CO., 216 BROOKERIDGE DR., WATERLOO, IA 50702

UNITED STATES PUBLIC LAND SURVEY CORNER CERTIFICATE OF

Land Survey Monuments situated in Section 36, Township T89N, Range R14W,
of the Fifth Principal Meridian, Black Hawk County, Iowa. Previously recorded in Book _____, Page _____,
in County Recorder's Office.

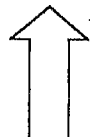
(Show reason for preparing this certificate, the evidence and detailed procedure used in establishing the corner positions and monumentation found or placed.)

Monument Description and Remarks: NE CORNER - FOUND CONC. MONUMENT
WITH BRASS CENTER 8" DEEP IN CENTER OF ROAD.

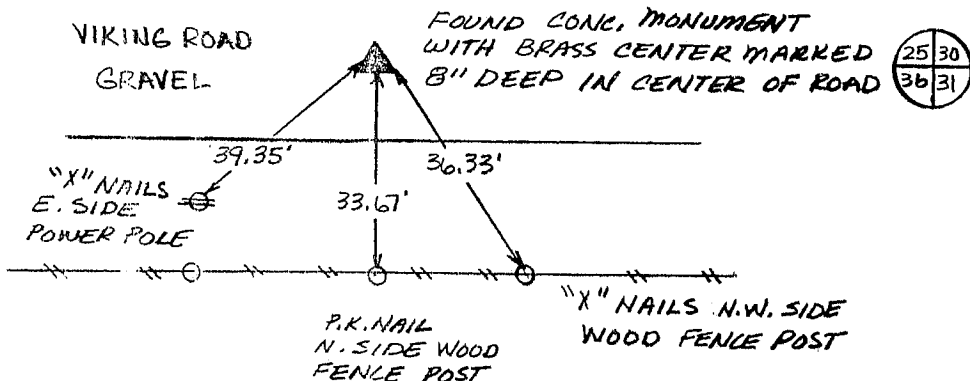
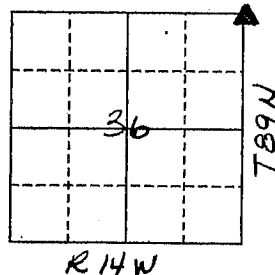
PLAN - VIEW

(Show a minimum of three reference ties to durable physical objects, relevant monuments and physical conditions that will enable recovery of the corner.)

NOT TO SCALE

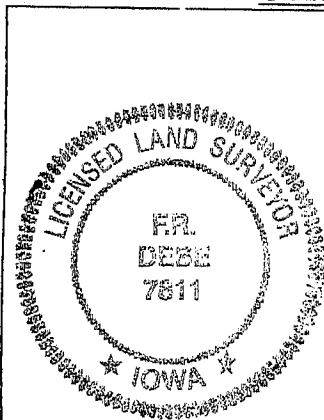


NORTH

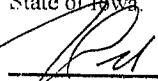
N.E. CORNER

FIELD SURVEY: OCTOBER 11, 2002
PREPARED BY: F.R. Debe

CERTIFICATION



I hereby certify that this land surveying document was prepared and the related survey work was performed by me or under my direct personal supervision and that I am a duly licensed Land Surveyor under the laws of the State of Iowa.


F. R. Debe10-15-02
(date)

License Number 7811

My license renewal date is December 31, 2002.

Pages or sheets covered by this seal: THIS
CORNER CERTIFICATE ONLY.

LIST CORNERS TO BE INDEXED

Corner	Section	Township	Range
NE	36	T89N	R14W