

WAYNE CLAASSEN ENGINEERING AND SURVEYING, INC.
P.O. BOX 898 WATERLOO, IOWA 50704-0898

PHONE: (VOICE) 319-235-6294
(FAX) 319-235-0028

UNITED STATES PUBLIC LAND SURVEY CORNER CERTIFICATE

Land Survey Monuments situated in Section 36, Township 89 North, Range 14 West, of the Fifth Principal Meridian, Black Hawk County, Iowa.

Previously recorded in Document No. 2003-37852 in County Recorder's Office.
(book, page, document number, etc.)

Monument Description and Remarks

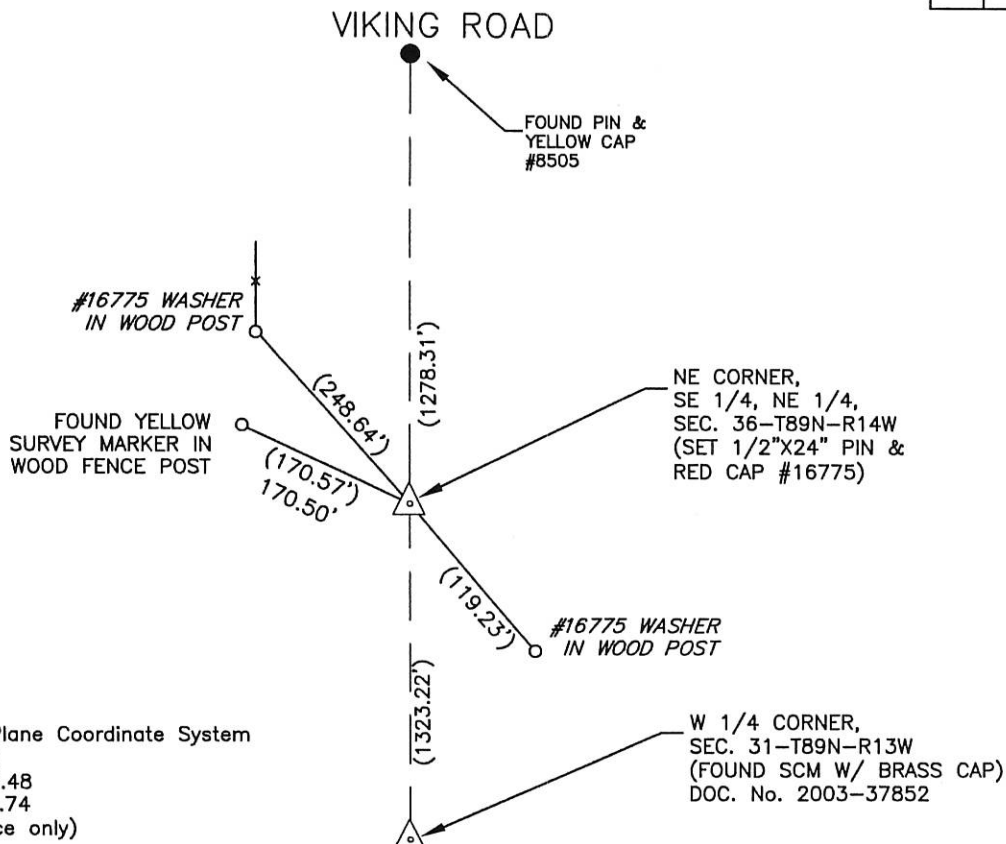
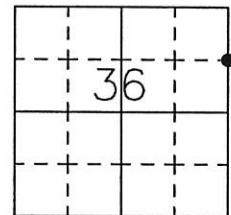
Went to location of Section corner and did not find pin and orange cap #15943. Set 1/2"x24" steel rebar and red cap #16775 at midpoint between Northeast corner and East 1/4 Quarter of Section 36.

000.00 DENOTES RECORD DIMENSION
FROM DOCUMENT NO. 2003-37852
(000.00) DENOTES FIELD DIMENSION

PLAN - VIEW

Reason for filing certificate:

- ☐ There is no certificate on file with the Recorder's Office.
☐ Accepts corner position which differs from the one shown in above document.
☒ The corner monument was replaced or modified.
☐ The reference ties in above document were incorrect or missing.



I hereby certify that this land surveying document was prepared and the related survey work was performed by me or under my direct personal supervision and that I am a duly Licensed Land Surveyor under the laws of the State of Iowa.

Signature: David L. Schell
David L. Schell, L.S.

Date: April 12, 2016 Lic. No. 16775

Pages or Sheets Covered by this Seal: THIS SHEET ONLY.

My license renewal date is December 31, 2016

SEAL

List Corners to be Indexed

Corners	Section	Twp	Range
NE CORNER, SE 1/4 NE 1/4,	36	89 N	14 W
NW CORNER, SW 1/4 NW 1/4,	31	89 N	13 W

