

UNITED STATES PUBLIC LAND SURVEY CORNER CERTIFICATE

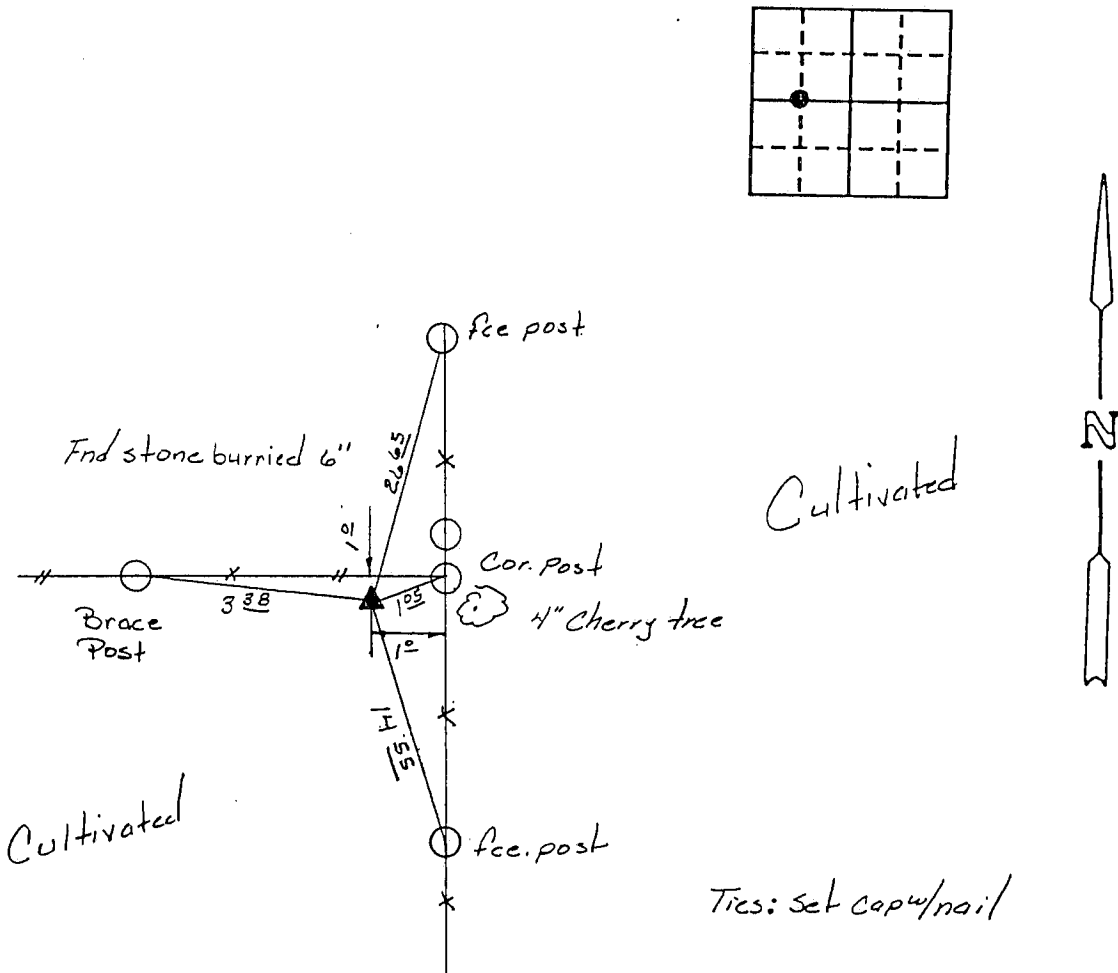
OF *Recorded*

Land Survey Monuments situated in Section 36, Township 89N, Range 14W, of the Fifth Principal Meridian, Black Hawk County, Iowa.
Previously recorded in Book _____, Page _____.

(Show reason for preparing this certificate, the evidence and detailed procedures used in establishing the corner positions and monumentation found or placed.)
Monument Description and Remarks: Found stone marking corner. Records show a stone marking the corner in 1872. Stone falls 0.4 ft. south of a line between the West one-quarter and the center of section and falls 0.3 ft. east of an equal split between the two corners.

PLAN - VIEW

(Show a minimum of three reference ties to durable physical objects, relevant monuments and physical conditions that will enable recovery of the corner.)



I hereby certify that the survey work was completed and this certificate was prepared by me or under my direct personal supervision and that I am a duly registered land surveyor under the laws of the state of Iowa.

Keith E. Vlademar 11/26/90
Keith E. Vlademar
REGISTERED LAND SURVEYOR NO. 9781

SEAL



List Corners to be Indexed

Corners	Section	Twp	Range
NW Cor. NE 1/4 SE 1/4	36	89N	14W