



Doc ID: 004646500001 Type: GEN
 Kind: CORNER
 Recorded: 12/02/2011 at 10:30:29 AM
 Fee Amt: \$7.00 Page 1 of 1
 Black Hawk County Iowa
 JUDITH A MCCARTHY RECORDER

File **2012-00010070**

Recorded By: Michael R. Fagle, P.L.S.

AECOM, 501 Sycamore St., Suite 222, Waterloo, Iowa 50703

1-319-232-6531

UNITED STATES PUBLIC LAND SURVEY CORNER CERTIFICATE OF

Land Survey Monuments situated in Section 35, Township 89 North,
 Range 14 West, of the Fifth Principal Meridian, Black Hawk
 County, Iowa. Previously recorded in *** See Below
 in County Engineer's Office. (Book, Page, Document Number, etc.)

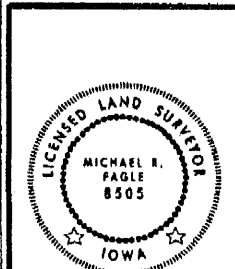
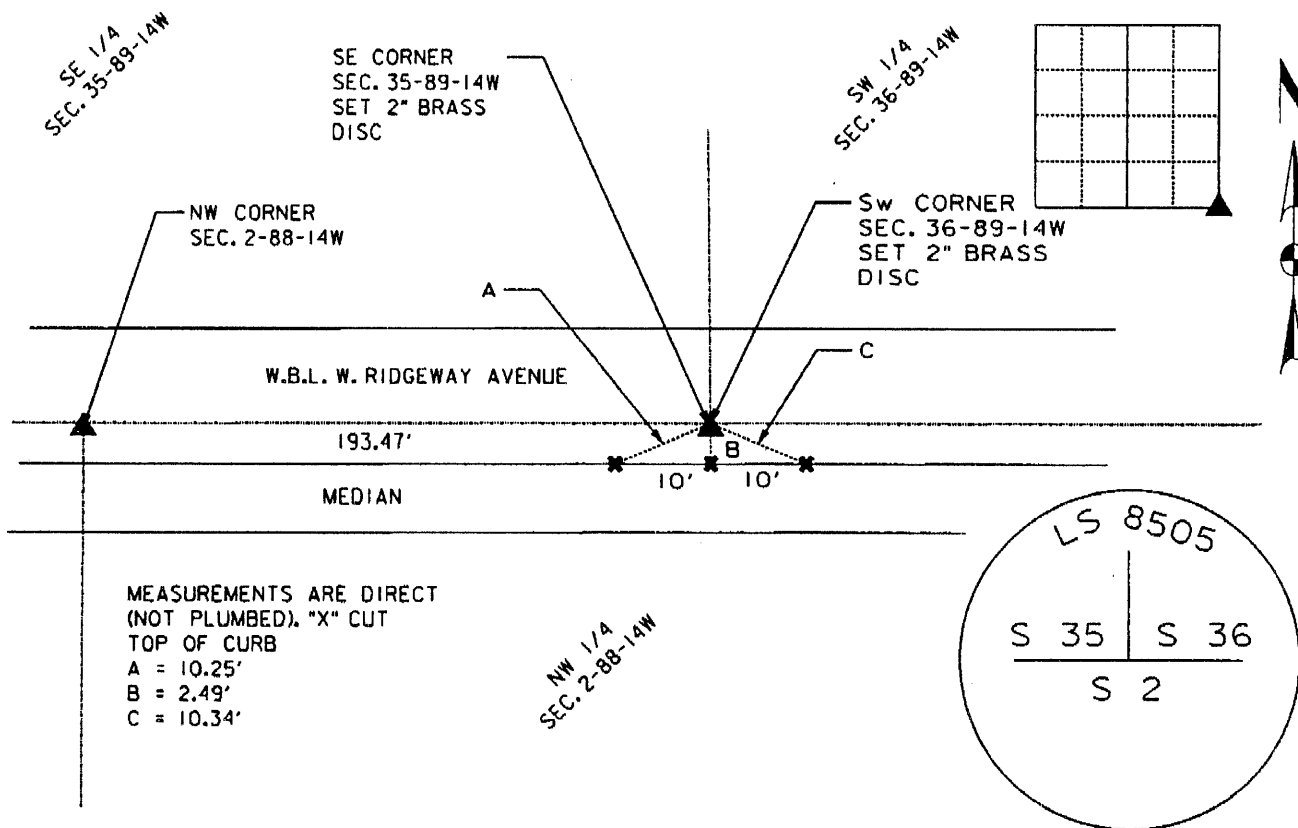
(Show reason for preparing this certificate, the evidence and detailed procedures used in establishing the corner positions and monumentation found or placed.)

Monument Description and Remarks: Found PK Nail after the Asphalt Surface
was removed dug down 3.5' and found SCM. After the construction was completed
on the City of Cedar Falls Ridgeway Avenue Reconstruction Project (RC-000-1913)
a 2" Brass Disc with Magnetic Washer was set. Stamped LS 8505 - S 35 - S 36 - S 2.

*** Section Corner Tie Book 1018 page 5 in the Black Hawk County Engineer's Office

PLAN - VIEW

(Show a minimum of three reference ties to durable physical objects, relevant monuments and physical conditions that will enable recovery of the corner.)



I hereby certify that this Land Surveying document was prepared by me or under my direct personal supervision and that I am a duly Licensed Land Surveyor under the laws of the State of Iowa.

Michael R. Fagle 12-01-2011
 MICHAEL R. FAGLE Date
 License number 8505
 My license renewal date is December 31, 2012
 Pages or sheets covered by this seal:
THIS SHEET

List Corners to be Indexed

Corners	Section	Twp	Range
Southeast Corner	35	T 89 N	R 14 W
Southwest Corner	36	T 89 N	R 14 W