

EARTH TECH  
501 SYCAMORE STREET  
SUITE 222  
WATERLOO, IA 50703

I  
P  
Z

Document Number: 2007023301  
Date: May 04, 2007 4:30:00 pm  
Aud Fee: 0.00 Rec Fee: 5.00  
Trans Tax: 0.00 Rec Management Fee: 1.00  
E-Com Fee: 1.00 Non-Standard Page Fee: 0.00  
Filed for record in Black Hawk County, Iowa  
Judith A. McCarthy, County Recorder

Michael R. Fagle, L.S.

Earth Tech, 501 Sycamore St., Suite 222, Waterloo, Iowa 50703

I-319-232-6531

## UNITED STATES PUBLIC LAND SURVEY CORNER CERTIFICATE OF

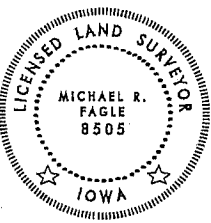
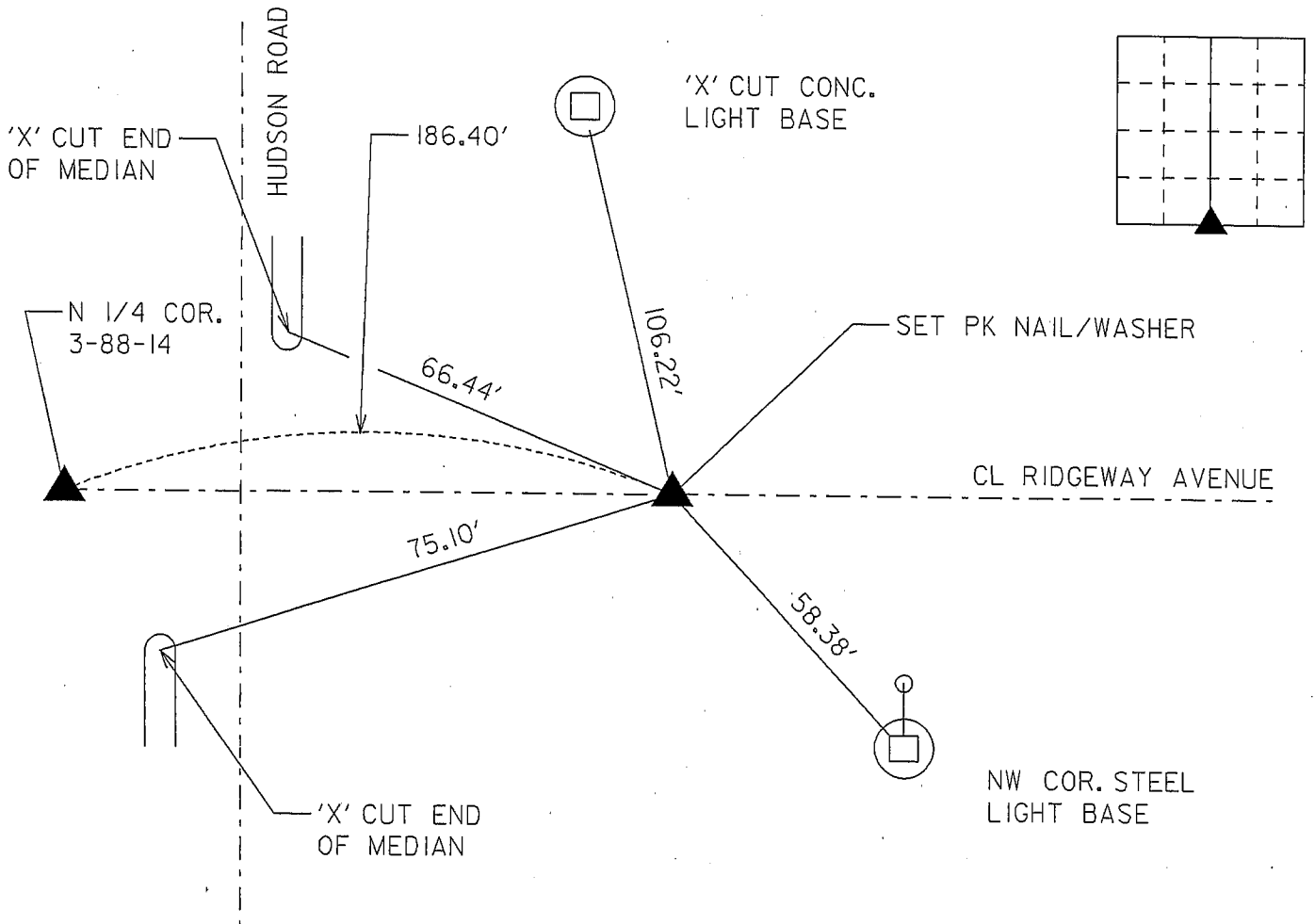
Land Survey Monuments situated in Section 35, Township 89 North,  
Range 14 West, of the Fifth Principal Meridian, BLACK HAWK  
County, Iowa. Previously recorded in \_\_\_\_\_  
In County Recorder's Office. (Book, Page, Document Number, etc.)

(Show reason for preparing this certificate, the evidence and detailed procedures used in establishing the corner positions and monumentation found or placed.)

Monument Description and Remarks: SET PK NAIL WITH WASHER AT THE SOUTH 1/4  
CORNER SECTION 35. THE LOCATION OF THE CORNER WAS ESTABLISH USING OLD TIES  
THAT ARE RECORDED IN THE BLACK HAWK COUNTY ENGINEER'S OFFICE AND EXISTING  
SURVEYS RECORDED IN THE BLACK HAWK COUNTY RECORDER'S OFFICE.

### PLAN - VIEW

(Show a minimum of three reference ties to durable physical objects, relevant monuments and physical conditions that will enable recovery of the corner.)



I hereby certify that this Land Surveying document was prepared by me or under my direct personal supervision and that I am a duly Licensed Land Surveyor under the laws of the State of Iowa.

Michael R. Fagle 4-25-07  
MICHAEL R. FAGLE Date

License number 8505

My license renewal date is December 31, 2008

Pages or sheets covered by this seal:

THIS SHEET

List Corners to be Indexed

| Corners          | Section | Twp    | Range  |
|------------------|---------|--------|--------|
| SOUTH 1/4 CORNER | 35      | T 89 N | R 14 W |