

EARTH TECH 501 SYCAMORE ST STE 222 WATERLOO, IA 50703

Recorded By: Michael R. Fagle, P.L.S.

Earth Tech, 501 Sycamore St., Suite 222, Waterloo, Iowa 50703

I-319-232-6531

## UNITED STATES PUBLIC LAND SURVEY CORNER CERTIFICATE OF

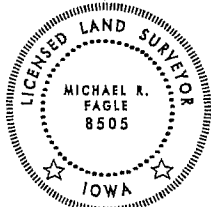
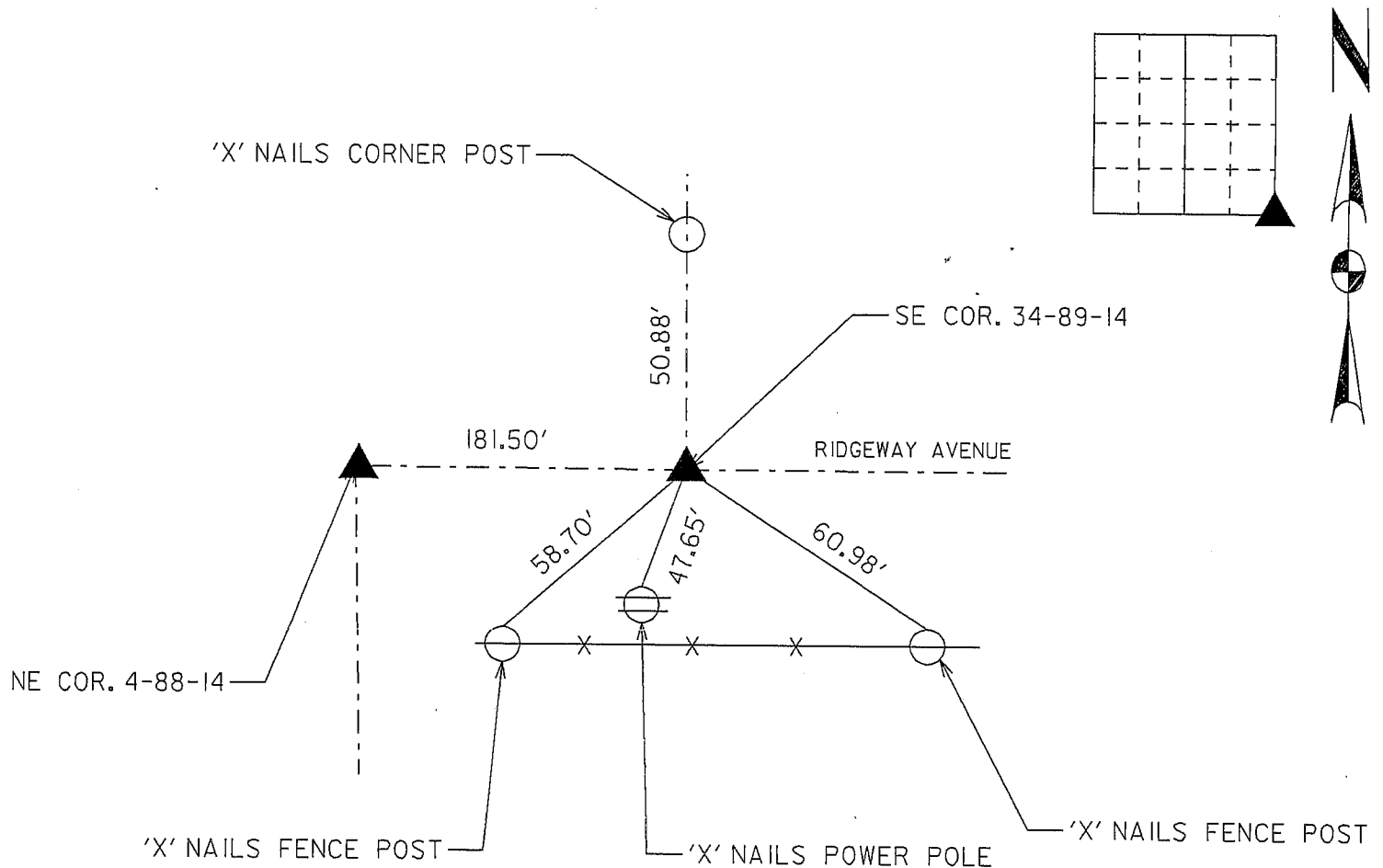
Land Survey Monuments situated in Section 34, Township 89 North,  
Range 14 West, of the Fifth Principal Meridian, Black Hawk  
County, Iowa. Previously recorded in Old Tie Books  
in County Engineer's Office. (Book, Page, Document Number, etc.)

(Show reason for preparing this certificate, the evidence and detailed procedures used in establishing the corner positions and monumentation found or placed.)

Monument Description and Remarks: Set PK Nail With Washer From Ties Found In  
Old Tie Books Located In the Black Hawk County Engineer's Office

### PLAN - VIEW

(Show a minimum of three reference ties to durable physical objects, relevant monuments and physical conditions that will enable recovery of the corner.)



I hereby certify that this Land Surveying document was prepared by me or under my direct personal supervision and that I am a duly Licensed Land Surveyor under the laws of the State of Iowa.

Michael R. Fagle 7-16-04  
MICHAEL R. FAGLE Date

License number 8505

My license renewal date is December 31, 2004

Pages or sheets covered by this seal:

THIS SHEET

#### List Corners to be Indexed

Corners	Section	Twp	Range
Southeast Corner	34	T 89 N	R 14 W