

SC  
Misc  
INDEX  
MARGIN  
PROOF  
COMPARE

BLACK HAWK COUNTY IOWA:SS 11361  
Filed for record DEC 8, 1997  
at 12:30 PM, and recorded in Book 328  
of Misc Page 378  
Catherine J. Sans Recorder  
Fee N/C  
ENGINEER'S OFFICE

PREPARED BY: BLACK HAWK COUNTY ENGINEERS OFFICE  
316 E. FIFTH STREET, ROOM 211 WATERLOO, IOWA 50703

PH.# (319) 291-2419  
FAX.# (319) 291-2461  
SLSI 9-94  
CERT 12-98

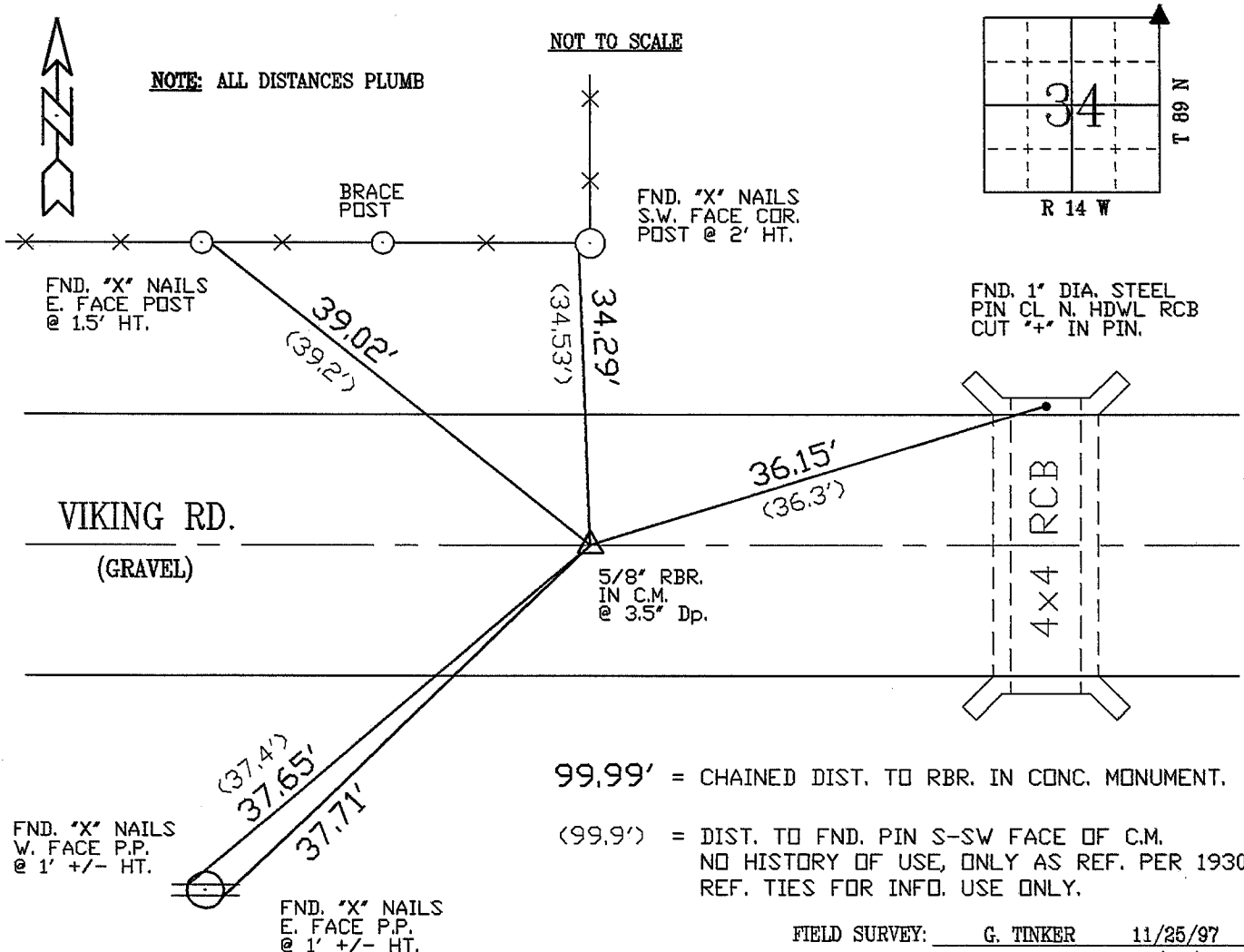
UNITED STATES PUBLIC LAND SURVEY CORNER CERTIFICATE OF  
Land Survey Monuments situated in Section 34, Township 89 N,  
Range 14 W, of the Fifth Principal Meridian, BLACK HAWK County, Iowa.  
Previously recorded in Misc. Book 319, Page 876, in County Recorder's Office.

(Show reason for preparing this certificate, the evidence and detailed procedures used in establishing the corner positions and monumentation found or placed.)

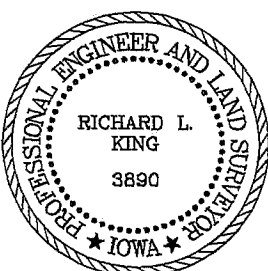
Monument Description and Remarks: FOUND STANDARD C.M. WITH 2" BRASS CAP  
STAMPED 27/26 AND LOC. ABOVE RD. SURFACE. TEMP. REF'ED AND SAW CUT OFF  
34/35 TOP 4" OF C.M. THEN DRILLED THROUGH C.M. AND EST. 5/8" RBR INTO PILOT  
FLUSH WITH TOP C.M. MONUMENT NOW LOC. 3.5" DEEP BELOW RD. SURFACE  
W/O ROCK SURF. IN PLACE. RE-TIED AS DENOTED. ALSO FND. 1/2" STEEL PIN  
LOC. S-S.W. FACE OF FND. C.M., DATED & UTIL. FOR MAG. LOC. - REMOVED -

### PLAN - VIEW

(Show a minimum of three reference ties to durable physical objects, relevant monuments and physical conditions that will enable recovery of the corner.)



### CERTIFICATION



I hereby certify that this land surveying document was prepared and the related survey work was performed by me or under my direct personal supervision and that I am a duly licensed Land Surveyor under the laws of the State of Iowa.

Richard L. King 12/8/97 (date)

License Number 3890

My license renewal date is December 31, 1997

Pages or sheets covered by this seal:

This Land Corner Certificate Only.

### LIST CORNERS TO BE INDEXED

Corner	Section	Township	Range
N.E. COR.	34	89 N	14 W