

INDEX	BLACK HAWK COUNTY, IOWA:ss	FEE BOOK #	2006	506
PROOF	FILED FOR RECORD	JUL 6	2005	AT 3:00 P.M. FEE 1-5.00-1.00/
COMPARED	<i>Jeffrey P. Helland</i> BLACK HAWK COUNTY RECORDER			

HELLAND ENGINEERING & SURVEYING LTD

Jeffrey P. Helland, 1107 Technology Parkway, Cedar Falls, Iowa 50613-6951, (319)-266-0161

UNITED STATES PUBLIC LAND SURVEY CORNER CERTIFICATE OF

LAND SURVEY MONUMENTS SITUATED IN SECTION NO. 33, TOWNSHIP NO. 89 NORTH, RANGE NO. 14 WEST OF THE FIFTH PRINCIPAL MERIDIAN, BLACK HAWK COUNTY, IOWA.
PREVIOUSLY RECORDED IN _____.

(SHOW REASON FOR PREPARING THIS CERTIFICATE, THE EVIDENCE AND DETAILED PROCEDURES USED IN ESTABLISHING THE CORNER POSITIONS AND MONUMENTATION FOUND OR PLACED.)

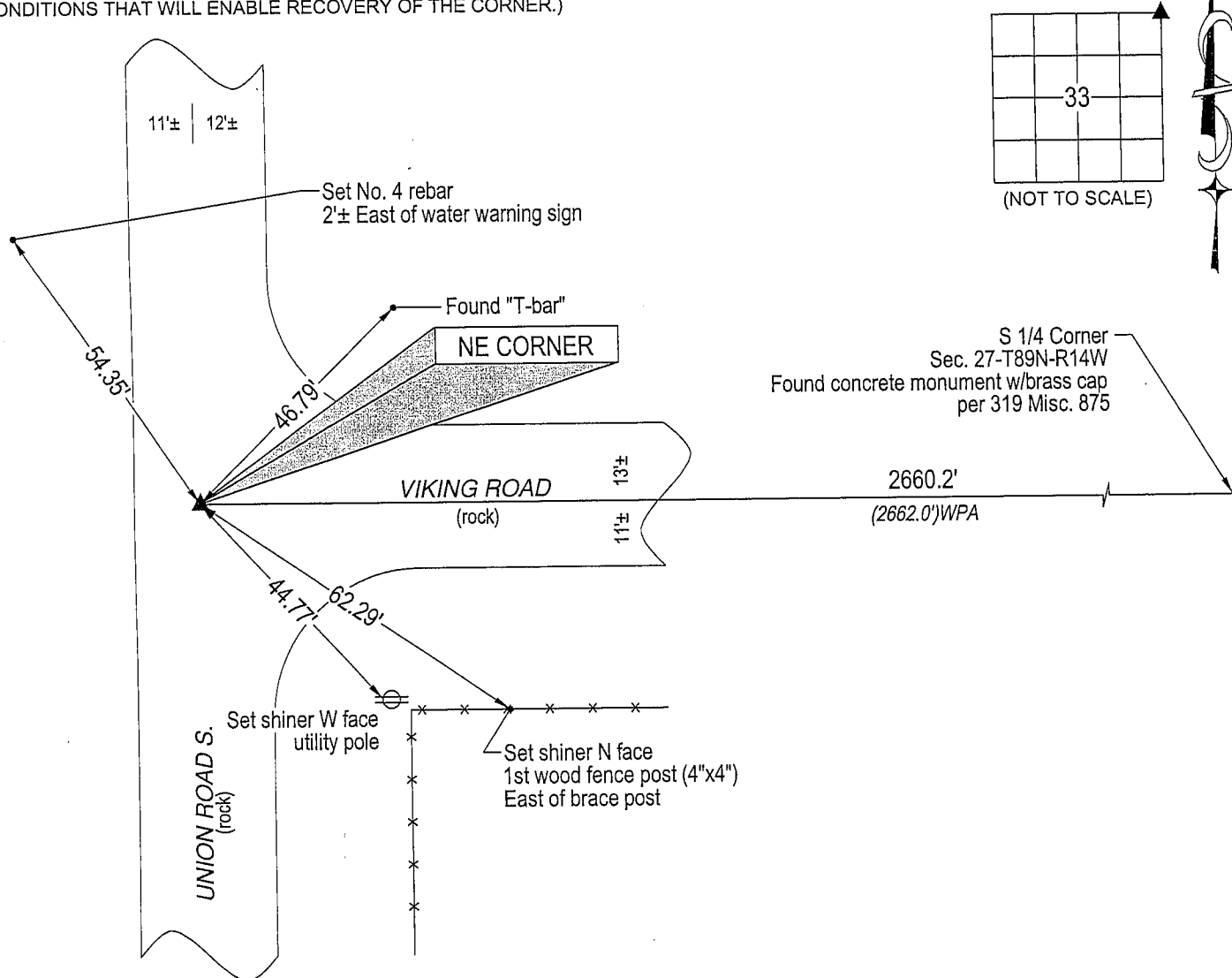
MONUMENT DESCRIPTION AND REMARKS:

No USPLSCC on file. Survey completed in the SW 1/4 of Sec. 27-T89N-R14W.

→ NE CORNER: Black Hawk County Engineer reference ties call for "concrete monument." Found standard concrete monument w/brass cap 0.8' deep corresponding to "Plat and Survey of: Parcels 5 & 6 in the W 3/4 of the SW 1/4 Sec. 27-T89N-R14W." Set No. 4 rebar on North side for magnetic detection.

PLAN VIEW

(SHOW A MINIMUM OF THREE REFERENCE TIES TO DURABLE PHYSICAL OBJECTS, RELEVANT MONUMENTS AND PHYSICAL CONDITIONS THAT WILL ENABLE RECOVERY OF THE CORNER.)

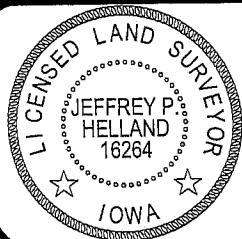


HELLAND ENGINEERING & SURVEYING, LTD.
1107 Technology Parkway
Cedar Falls, Iowa 50613-6951
(319)-266-0161

shiner = 8d nail & 1 15/16"Ø metal shiner

(00') Recorded As

File Name: 05-219c1.dwg



I hereby certify that this land surveying document was prepared and the related survey work was performed by me or under my direct personal supervision and that I am a duly licensed Land Surveyor under the laws of the State of Iowa.

Jeffrey P. Helland 6/28/05
Jeffrey P. Helland
License Number 16264
My license renewal date is December 31, 2005.
All pages or sheets are covered by this seal except:

LIST CORNERS TO BE INDEXED

CORNER	SECTION	TOWNSHIP	RANGE
NE CORNER	33	89N	14W

Rec.