

SC  
Misc  
INDEX  
MARGIN  
PROOF  
COMPARE

BLACK HAWK COUNTY, IOWA: SS  
Filed for record Jul 14, 1997 at  
3:00 P.M. and recorded in Book 326  
of Misc        Page 273

845

Patricia A. Liss Recorder  
Fee 1-5.00/  
PAUL HELLAND

PAUL H. HELLAND, 1107 TECHNOLOGY PARKWAY, CEDAR FALLS, IOWA 50613, (319)-266-0161

## UNITED STATES PUBLIC LAND SURVEY CORNER CERTIFICATE OF

Land Survey Monuments situated in Section 32, Township 89, Range  
14, of the Fifth Principal Meridian, BLACK HAWK County, Iowa.  
Previously recorded in Book       , Page       .

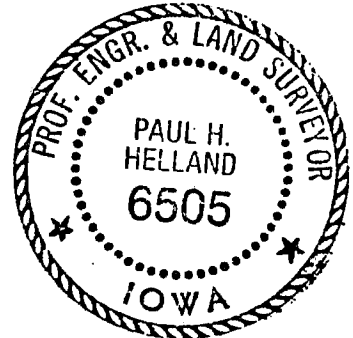
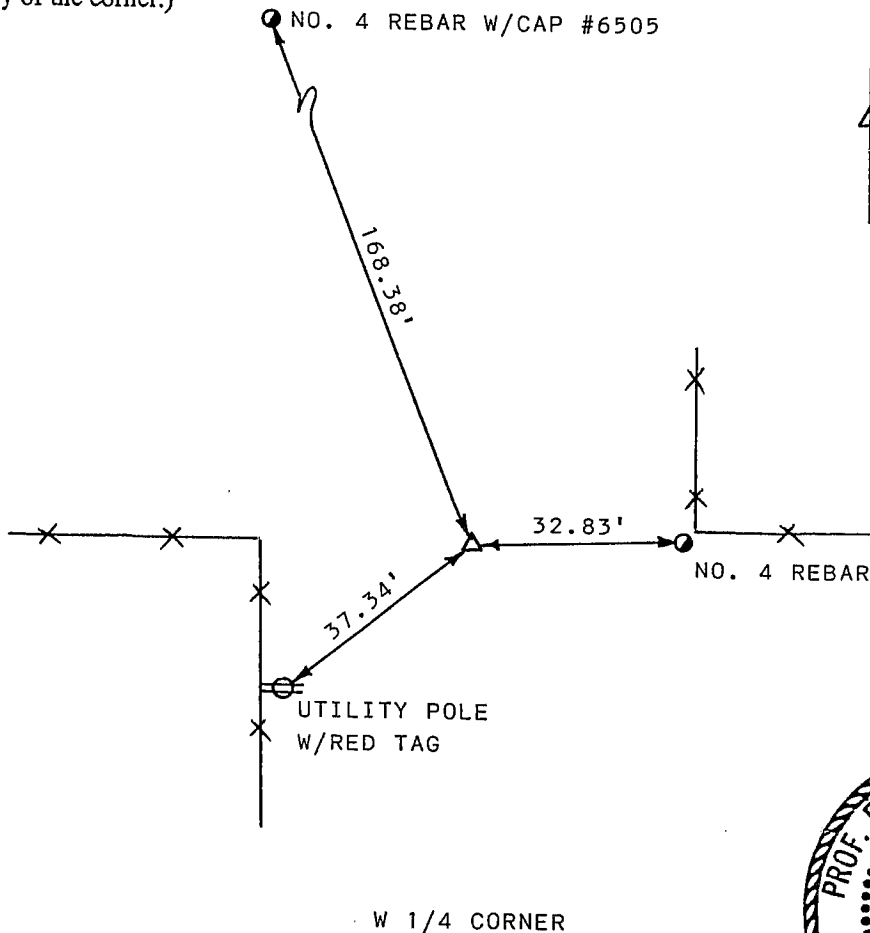
(Show reason for preparing this certificate, the evidence and detailed procedures used in establishing the corner positions and monumentation found or placed.)

Monument Description and Remarks: SURVEY DONE IN SW 1/4 SEC. 32-89-14

W 1/4 CORNER - FOUND CONCRETE MONUMENT W/BRASS CAP MARKED "31+32" 0.6' DEEP,  
SET NO. 4 REBAR ON SOUTH SIDE FOR MAGNETIC LOCATION PURPOSES.

### PLAN - VIEW

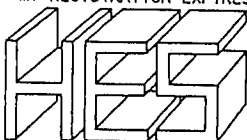
(Show a minimum of three reference ties to durable physical objects, relevant monuments and physical conditions that will enable recovery of the corner.)



97-214

I HEREBY CERTIFY THAT THIS PLAT, MAP, SURVEY OR REPORT WAS MADE  
BY ME OR UNDER MY DIRECT PERSONAL SUPERVISION AND THAT I AM A  
DULY REGISTERED LAND SURVEYOR UNDER THE LAWS OF THE STATE OF IOWA.

Paul H. Helland DATE 6/30/97  
PAUL H. HELLAND, P.E. & R.L.S. IOWA REGISTRATION NO. 6505  
MY REGISTRATION EXPIRES DECEMBER 31, 1997



HELLAND ENGINEERING  
& SURVEYING, LTD.  
1107 TECHNOLOGY PARKWAY  
CEDAR FALLS, IOWA 50613  
319-266-0161

#### List Corners to be Indexed

Corners	Section	Twp	Range
W 1/4	32	89	14