

Paul H. Helland, 1107 Technology Parkway, Cedar Falls, Iowa 50613-6951, (319)-266-0161

UNITED STATES PUBLIC LAND SURVEY CORNER CERTIFICATE OF

LAND SURVEY MONUMENTS SITUATED IN SECTION NO. 32, TOWNSHIP NO. 89 NORTH, RANGE
NO. 14 WEST OF THE FIFTH PRINCIPAL MERIDIAN, BLACK HAWK COUNTY, IOWA.

PREVIOUSLY RECORDED IN BOOK _____, PAGE _____.

(SHOW REASON FOR PREPARING THIS CERTIFICATE, THE EVIDENCE AND DETAILED PROCEDURES USED IN ESTABLISHING THE
CORNER POSITIONS AND MONUMENTATION FOUND OR PLACED.)

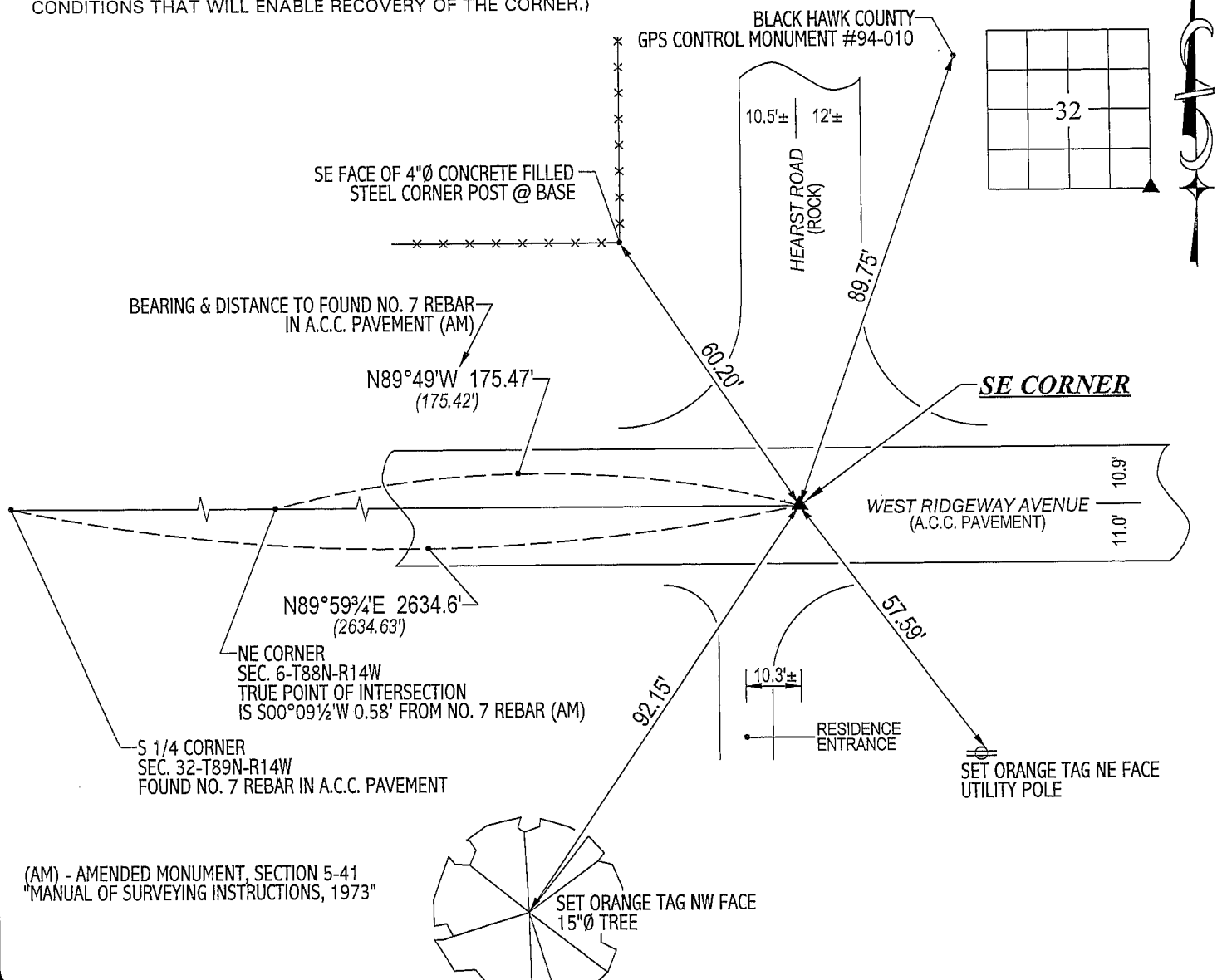
MONUMENT DESCRIPTION AND REMARKS:

NO CORNER CERTIFICATE ON FILE. SURVEY DONE IN NEFRL 1/4 OF SEC. 6-T88N-R14W.

→ SE CORNER: FOUND NO. 8 REBAR IN A.C.C. PAVEMENT CORRESPONDING TO "IDOT" CORNER STONE SURVEY DATED 12/5/1977.

PLAN VIEW

(SHOW A MINIMUM OF THREE REFERENCE TIES TO DURABLE PHYSICAL OBJECTS, RELEVANT MONUMENTS AND PHYSICAL
CONDITIONS THAT WILL ENABLE RECOVERY OF THE CORNER.)



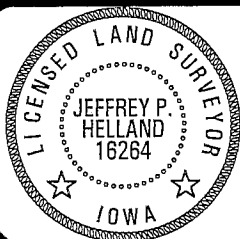
(AM) - AMENDED MONUMENT, SECTION 5-41
"MANUAL OF SURVEYING INSTRUCTIONS, 1973"



HELLAND ENGINEERING & SURVEYING, LTD.
1107 Technology Parkway
Cedar Falls, Iowa 50613-6951
(319)-266-0161

(00.00') - PER "IDOT" CORNER STONE SURVEY DATED 12/5/1977.

FILE NAME: 03-311C2.DRG



I hereby certify that this land surveying document was prepared
and the related survey work was performed by me or under my
direct personal supervision and that I am a duly licensed Land
Surveyor under the laws of the State of Iowa.

Jeffrey P. Helland 10/7/03
Jeffrey P. Helland
License Number 16264
My license renewal date is December 31, 2003.
All pages or sheets are covered by this seal except:

LIST CORNERS TO BE INDEXED			
CORNER	SECTION	TOWNSHIP	RANGE
SE CORNER	32	89N	14W

REC.