

Prepared by & Return to: Isaiah M. Reicks, HRS, LLC, 2206 East Bremer Avenue, Waverly, IA 50677, Phone 319-483-5187

Land Survey Monument situated in  
Section **32**, Township **89** North, Range **14** West of the Fifth Principal Meridian, **Black Hawk** County, Iowa.  
On file in **Document #2009-00019759** in the County Recorder's Office.

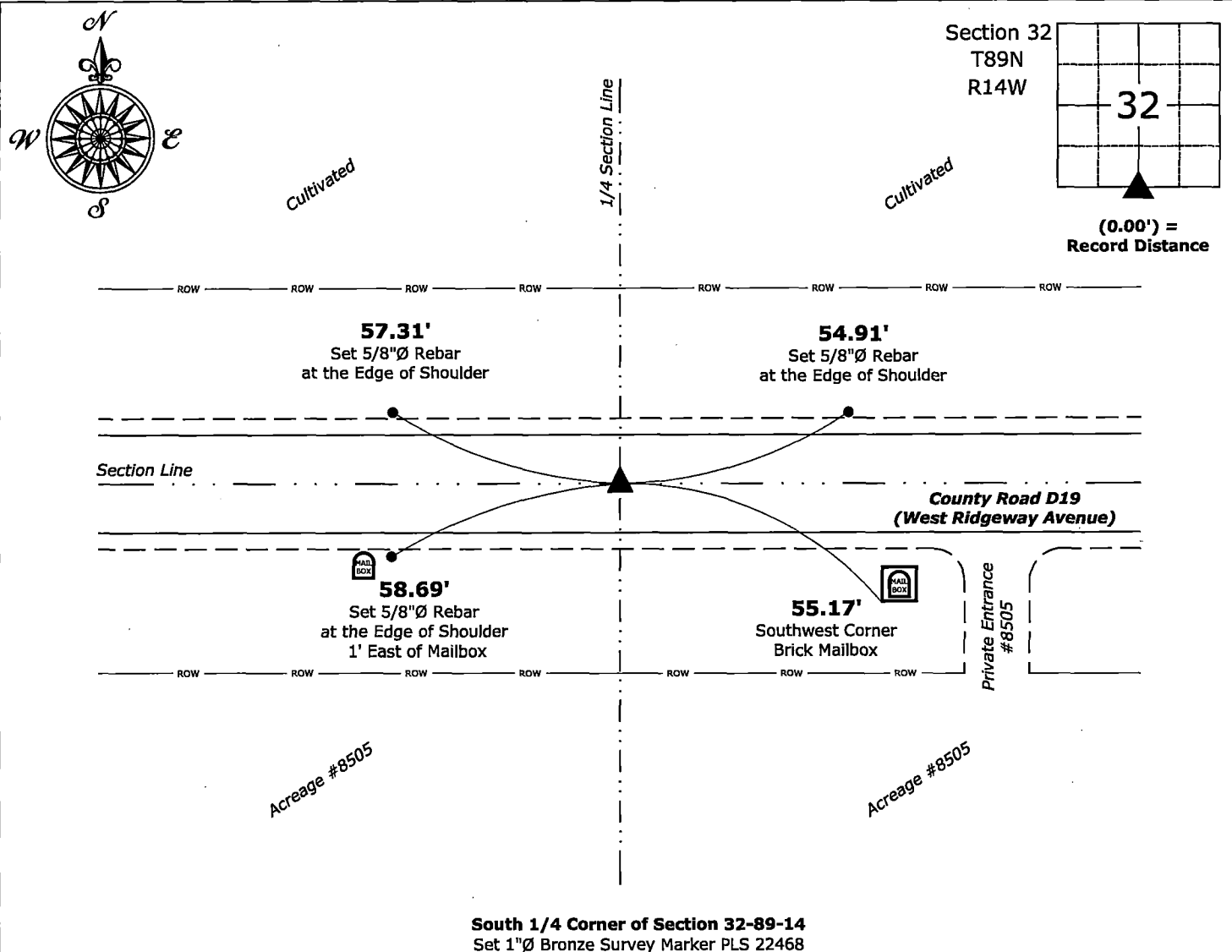
This certificate is being prepared in compliance with Iowa Code Chapter 355.11 because:

- ☐ There is no certificate on file for this corner.
- ☐ There are no longer three valid ties of record.
- ☐ There are changes to reference ties of record.
- ☒ There is change of monumentation of record.
- ☐ To clarify description of record monument (ties).

**Monument Description and Remarks:**

**South 1/4 Corner:** Found 5/8"Ø Rebar with information obtained from the previously recorded Section Corner Certificate. Set 1"Ø Bronze Survey Marker PLS 22468 with coordinates of the found location obtained prior to highway reconstruction. Corner reset in conjunction with Project No. LFM-5025--7X-07.

(Show a minimum of three reference ties to durable physical objects, relevant monuments and physical conditions that will enable recovery of the corner.)



Isaiah M. Reicks Date: 8-23-23

License number 22468  
My license renewal date is December 31, 2023.  
Sheets covered by this seal: Individual sheet only

Corner	Section	Township	Range
S 1/4	32	89	14

Project Number: 2023-533

FB: Black Hawk 11. Page(s) 11-12