

BLACK HAWK COUNTY ENGINEER

PREPARED BY: BLACK HAWK COUNTY ENGINEERS OFFICE  
316 E. FIFTH STREET, ROOM 211 WATERLOO, IOWA 50703

PH.# (319) 833-3008  
FAX.# (319) 833-3139

SLSI 9-94  
CERT 12-96

UNITED STATES PUBLIC LAND SURVEY CORNER CERTIFICATE OF  
Land Survey Monuments situated in Section 32, Township 89 N,  
Range 14 W, of the Fifth Principal Meridian, BLACK HAWK County, Iowa.  
Previously recorded in Misc. Book N/A, Page N/A, in County Recorder's Office.

(Show reason for preparing this certificate, the evidence and detailed procedures used in establishing the corner positions and monumentation found or placed.)

Monument Description and Remarks: N.E. CORNER SECTION 32-89-14  
FOUND STANDARD I.D.O.T. ALUM. MON. IN HORZ. CURVE ALIGNED WITH  
HEARST RD. (NORTH & SOUTH), AND 7.5' SOUTH OF C.L. "D18".  
CORNER RETIED FOR ROW ESTABLISHMENT @ N. LINE SECTION 33.

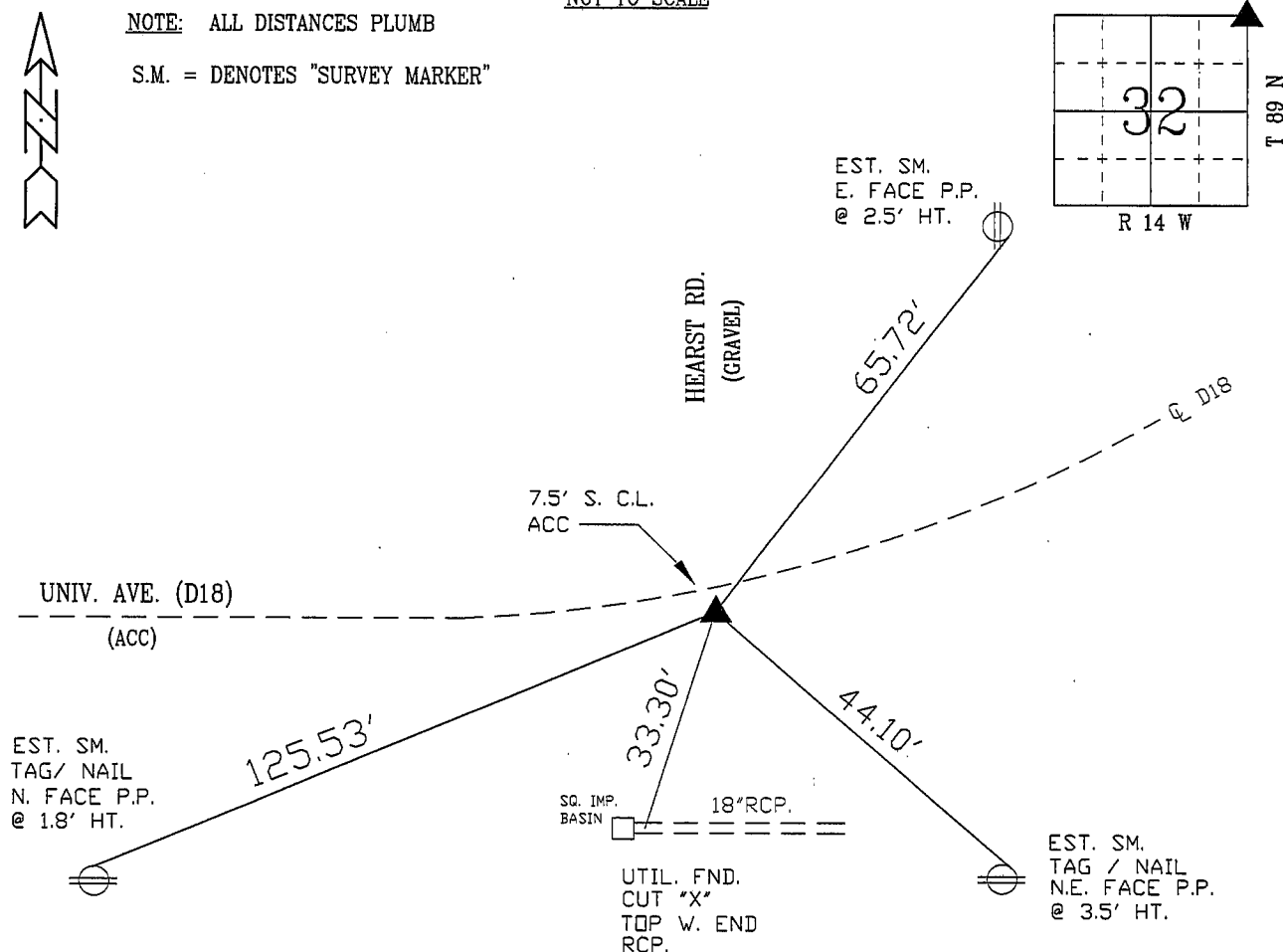
PLAN - VIEW

(Show a minimum of three reference ties to durable physical objects, relevant monuments and physical conditions that will enable recovery of the corner.)

NOT TO SCALE

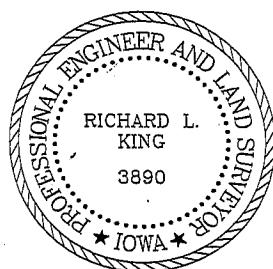
NOTE: ALL DISTANCES PLUMB

S.M. = DENOTES "SURVEY MARKER"



FIELD SURVEY: G.T. / C.W. / M.C. 5/28/02  
PREPARED BY: M.C. / G.T. 06/14/02

## CERTIFICATION



I hereby certify that this land surveying document was prepared and the related survey work was performed by me or under my direct personal supervision and that I am a duly licensed Land Surveyor under the laws of the State of Iowa.

Richard L. King 6/19/62  
Richard L. King (date)  
License Number 3890

My license renewal date is December 31, 2003

Pages or sheets covered by this seal:

This Land Corner Certificate Only.

LIST CORNERS TO BE INDEXED

<u>Corner</u>	<u>Section</u>	<u>- Township</u>	<u>- Range</u>
N.E. 1/4	32	89 N	14 W
N.W. 1/4	33	89 N	14 W
S.E. 1/4	29	89 N	14 W
S.W. 1/4	28	89 N	14 W