

sc
Misc
INDEX
MARGIN
COF
OFF
FILE

BLACK HAWK COUNTY IOWA: SS
Filed for record May 15, 1997 at
4:55 P.M. and recorded in Book 325
of Misc Page 343
Richard L. King Recorder
Fee N/C
BH COUNTY ENGINEER

County Assessor

21292

PREPARED BY: BLACK HAWK COUNTY ENGINEERS OFFICE
316 E. FIFTH STREET, ROOM 211 WATERLOO, IOWA 50703
PH.# (319) 291-2419 SLSI 9-94
FAX# (319) 291-2461 CERT 12-96

UNITED STATES PUBLIC LAND SURVEY CORNER CERTIFICATE OF
Land Survey Monuments situated in Section 32, Township 89 N,
Range 14 W, of the Fifth Principal Meridian, BLACK HAWK County, Iowa.
Previously recorded in Book N/A, Page N/A, in County Recorder's Office.

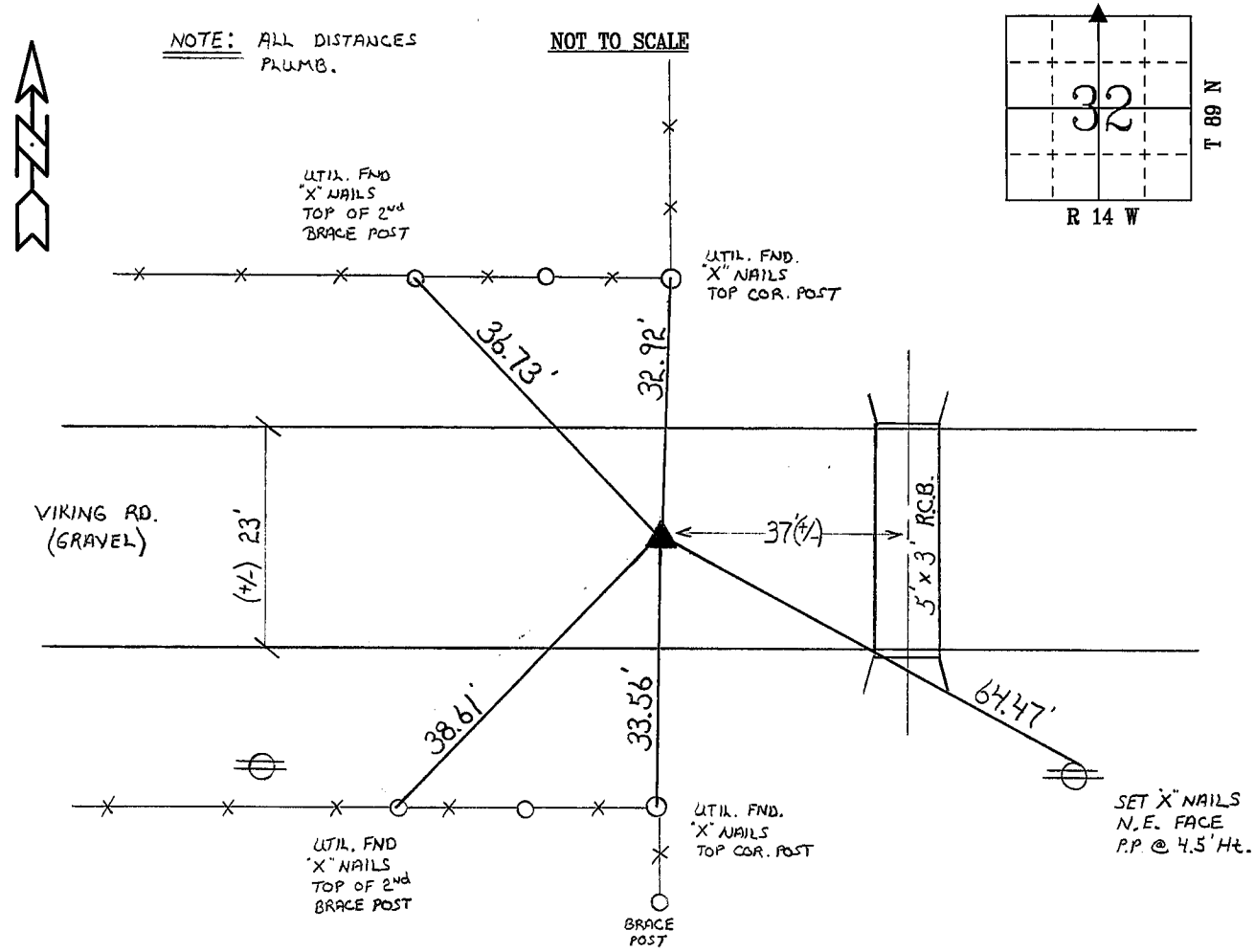
(Show reason for preparing this certificate, the evidence and detailed procedures used in establishing the corner positions and monumentation found or placed.)

Monument Description and Remarks: FOUND 5/8" REBAR WITH 1-1/2" ALUM.
CAP L.S. # 12088, LOC. 2" DEEP FROM ROAD SURFACE. PREV. DESC. AS FND.
CONCRETE MONUMENT LOWERED 15" BELOW ROAD SURFACE AND PLACED IRON
REBAR OVER CONCRETE MONUMENT.

DOCUMENT FILED TO COMPLETE AND UPDATE INCOMPLETE DATA FND. ON FILE.

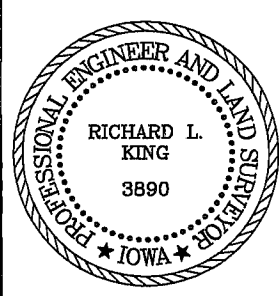
PLAN - VIEW

(Show a minimum of three reference ties to durable physical objects, relevant monuments and physical conditions that will enable recovery of the corner.)



FIELD SURVEY: G. TINKER 5-12-97
PREPARED BY: G. TINKER 5-12-97

CERTIFICATION



I hereby certify that this land surveying document was prepared and the related survey work was performed by me or under my direct personal supervision and that I am a duly licensed Land Surveyor under the laws of the State of Iowa.

Richard L. King 5/15/97
Richard L. King (date)
License Number 3890
My license renewal date is December 31, 1997
Pages or sheets covered by this seal:
This Land Corner Certificate Only.

LIST CORNERS TO BE INDEXED

Corner	Section	Township	Range
N. 1/4	32	89 N	14 W