



Doc ID: 010071100001 Type: GEN
 Recorded: 02/09/2021 at 10:10:25 AM
 Fee Amt: \$7.00 Page 1 of 1
 Black Hawk County Iowa
 SANDIE L. SMITH RECORDER

File **2021-00016763**

Reserved for County Recorder's use.

Kyle J. Helland, 6109 Chancellor Drive, Cedar Falls, Iowa 50613-6916, (319)-266-0161

UNITED STATES PUBLIC LAND SURVEY CORNER CERTIFICATE OF

LAND SURVEY MONUMENTS SITUATED IN SECTION NO. 32, TOWNSHIP NO. 89 NORTH, RANGE
 NO. 14 WEST OF THE FIFTH PRINCIPAL MERIDIAN, BLACK HAWK COUNTY, IOWA.

PREVIOUSLY RECORDED IN FILE 2013-00013857

(SHOW REASON FOR PREPARING THIS CERTIFICATE, THE EVIDENCE AND DETAILED PROCEDURES USED IN ESTABLISHING THE
 CORNER POSITIONS AND MONUMENTATION FOUND OR PLACED.)

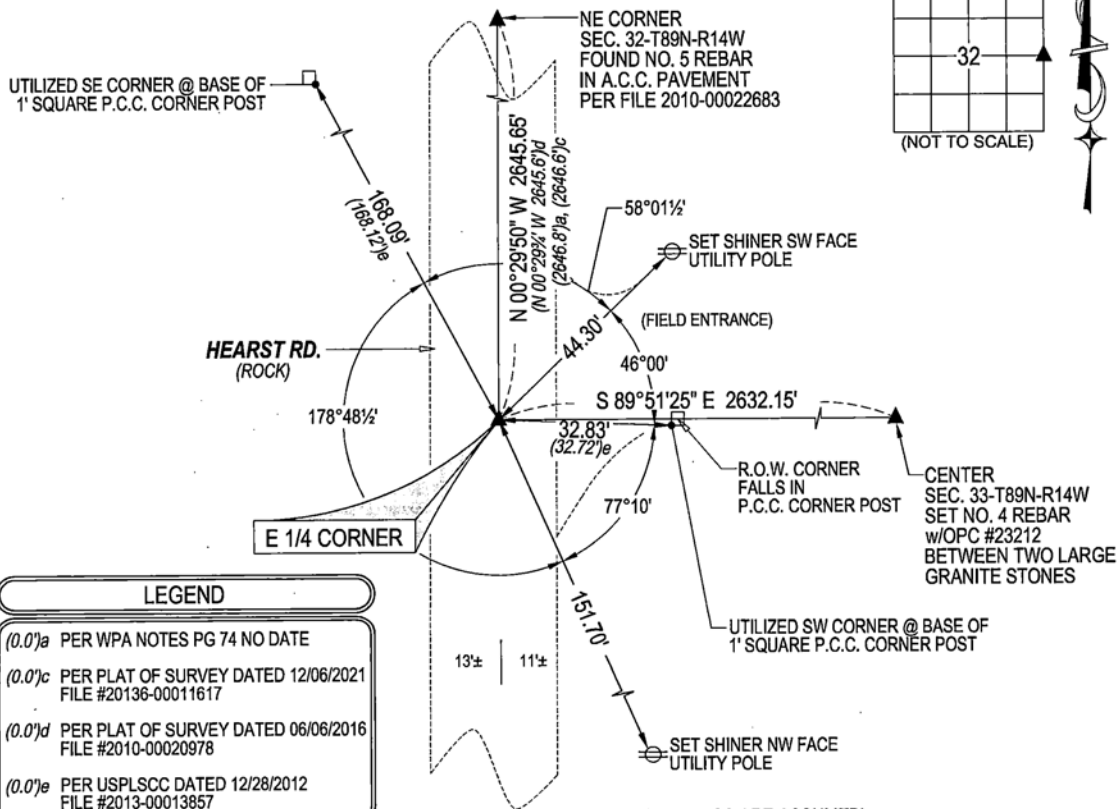
MONUMENT DESCRIPTION AND REMARKS:

ONLY 2 TIES REMAIN. SURVEY COMPLETED IN THE NW 1/4 OF SEC. 33-T89N-R14W.

→ **E 1/4 CORNER:** WPA NOTES (UNDATED) CALLS FOR [FOUND N****HEAD 7"x9"x12" IRON BAR 5/8" x 20" LIMESTONE
 3"x4"x8" BROKEN C/M. SET.] BLACK HAWK COUNTY ENGINEER'S TIES (UNDATED) CALLS FOR [CONCRETE MONUMENT].
 USPLSCC FILE #2013-00013857 DATED 12/28/2012 CALLS FOR [FOUND NO. 4 REBAR (0.2± DEEP)]. SEARCHED AREA
 WITH MAGNETIC DETECTOR, EXCAVATED, AND FOUND NO. 4 REBAR 0.2' DEEP.

PLAN VIEW

(SHOW A MINIMUM OF THREE REFERENCE TIES TO DURABLE PHYSICAL OBJECTS, RELEVANT MONUMENTS AND PHYSICAL
 CONDITIONS THAT WILL ENABLE RECOVERY OF THE CORNER.)



LEGEND

- (0.0)a PER WPA NOTES PG 74 NO DATE
- (0.0)c PER PLAT OF SURVEY DATED 12/06/2021
 FILE #20136-00011617
- (0.0)d PER PLAT OF SURVEY DATED 06/06/2016
 FILE #2010-00020978
- (0.0)e PER USPLSCC DATED 12/28/2012
 FILE #2013-00013857

(BEARINGS ARE ASSUMED)



HELLAND ENGINEERING & SURVEYING, LTD.
 6109 Chancellor Drive
 Cedar Falls, Iowa 50613-6916
 (319)-266-0161

BRASS TAG = 4d. NAIL & 13/16" Ø BRASS TAG DRAWN BY: KDA
 SHINER = 1" Ø STEEL SHINER w/MASONRY NAIL
 OPC = PLASTIC CAP (O=ORANGE, R=RED, Y=YELLOW)
 (00) RECORDED AS FILE NAME: 21-107-26.DWG



I hereby certify that this land surveying document was prepared
 and the related survey work was performed by me or under my
 direct personal supervision and that I am a duly licensed
 Professional Land Surveyor under the laws of the State of Iowa.
Kyle J. Helland 02/09/2021
 Kyle J. Helland
 License Number 23212
 My license renewal date is December 31, 2021.
 All pages or sheets are covered by this seal except:

LIST CORNERS TO BE INDEXED

CORNER	SECTION	TOWNSHIP	RANGE
E 1/4 CORNER	32	89N	14W
W 1/4 CORNER	33	89N	14W

File Number **2021-00016763** Seq. 1