

Jeffrey P. Helland, 1107 Technology Parkway, Cedar Falls, Iowa 50613-6951, (319)-266-0161

# UNITED STATES PUBLIC LAND SURVEY CORNER CERTIFICATE OF

LAND SURVEY MONUMENTS SITUATED IN SECTION NO. 32, TOWNSHIP NO. 89 NORTH, RANGE  
NO. 14 WEST OF THE FIFTH PRINCIPAL MERIDIAN, BLACK HAWK COUNTY, IOWA.

PREVIOUSLY RECORDED IN \_\_\_\_\_ N/A

(SHOW REASON FOR PREPARING THIS CERTIFICATE, THE EVIDENCE AND DETAILED PROCEDURES USED IN ESTABLISHING THE CORNER POSITIONS AND MONUMENTATION FOUND OR PLACED.)

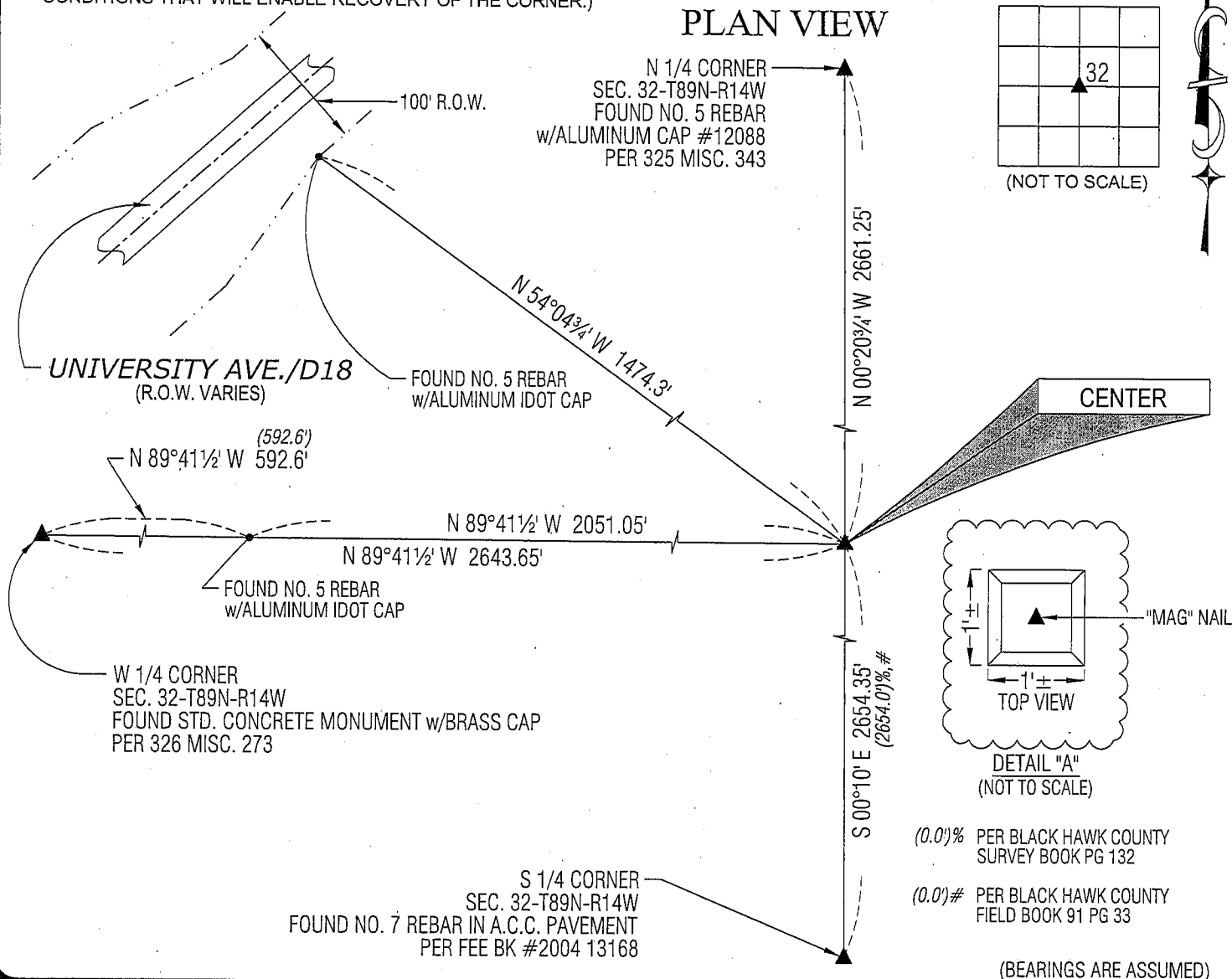
MONUMENT DESCRIPTION AND REMARKS:

NO USPLSCC ON FILE. SURVEY COMPLETED IN THE NW 1/4 SEC. 32-T89N-R14W.

**CENTER:** NO BLACK HAWK COUNTY ENGINEER REFERENCE TIES AVAILABLE. FOUND 1' x 1' SQUARE P.C.C. CORNER POST (SEE DETAIL "A"). DISTANCE CORRESPONDS WITHIN REASON TO THE S 1/4 CORNER PER BLACK HAWK COUNTY FIELD BOOK 91 PG 33 & PER BLACK HAWK COUNTY SURVEY BOOK PG 132. SAID P.C.C CORNER POST ALSO IS DIRECTLY ON LINE WITH THE W 1/4 CORNER & A FOUND NO. 5 REBAR w/ALUMINUM IDOT CAP (EASTERLY RIGHT-OF-WAY UNIVERSITY AVE./D18). SET SMALL "MAG" NAIL @ TOP CENTER OF SAID P.C.C. CORNER POST AND UTILIZED AS CORNER.

(SHOW A MINIMUM OF THREE REFERENCE TIES TO DURABLE PHYSICAL OBJECTS, RELEVANT MONUMENTS AND PHYSICAL CONDITIONS THAT WILL ENABLE RECOVERY OF THE CORNER.)

## PLAN VIEW



(BEARINGS ARE ASSUMED)



HELLAND ENGINEERING & SURVEYING, LTD.

1107 Technology Parkway  
Cedar Falls, Iowa 50613-6951  
(319)-266-0161

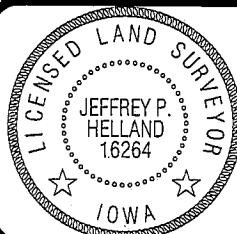
SHINER = 8D NAIL & 1 5/16"Ø METAL SHINER

BRASS TAG = 13/16"Ø BRASS TAG

OPC = PLASTIC CAP (O=ORANGE, R=RED, Y=YELLOW)

(00') RECORDED AS

FILE NAME: 08-284C1.DWG



I hereby certify that this land surveying document was prepared and the related survey work was performed by me or under my direct personal supervision and that I am a duly licensed Land Surveyor under the laws of the State of Iowa.

Jeffrey P. Holland 10/7/03

License Number 16264

My license renewal date is December 31, 2009.

All pages or sheets are covered by this seal except:

LIST CORNERS TO BE INDEXED

CORNER	SECTION	TOWNSHIP	RANGE
CENTER	32	89N	14W

Re-