

Jeffrey P. Helland, 1107 Technology Parkway, Cedar Falls, Iowa 50613-6951, (319)-266-0161

UNITED STATES PUBLIC LAND SURVEY CORNER CERTIFICATE OF

LAND SURVEY MONUMENTS SITUATED IN SECTION NO. 31, TOWNSHIP NO. 89 NORTH, RANGE
NO. 14 WEST OF THE FIFTH PRINCIPAL MERIDIAN, BLACK HAWK COUNTY, IOWA.
PREVIOUSLY RECORDED IN 325 MISC. 339.

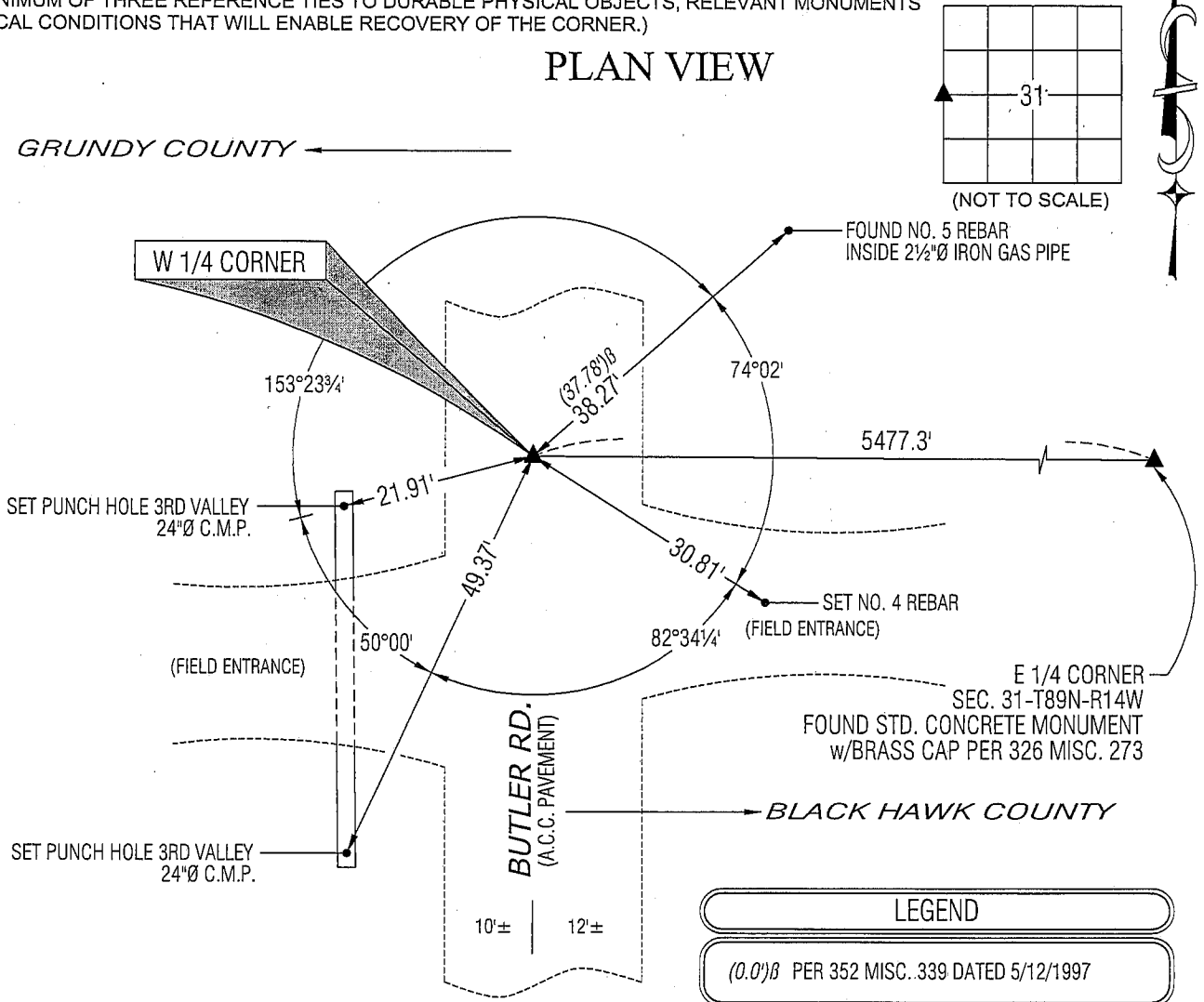
(SHOW REASON FOR PREPARING THIS CERTIFICATE, THE EVIDENCE AND DETAILED PROCEDURES USED IN ESTABLISHING THE
CORNER POSITIONS AND MONUMENTATION FOUND OR PLACED.)

MONUMENT DESCRIPTION AND REMARKS:

USPLSCC 325 MISC. 339 REFERENCE TIES HAVE CHANGED. SURVEY COMPLETED IN THE NE 1/4 OF SEC. 31-T89N-R14W.
→ **W 1/4 CORNER:** GRUNDY COUNTY ENGINEER REFERENCE TIES DATED 5/2/1918 CALLS FOR [STONE, IRON STAKE ON N.].
GRUNDY COUNTY ENGINEER REFERENCE TIES (NO DATE) CALLS FOR [I.D.O.T. FOUND IRON PIN 6" DEEP] ALL REFERENCE
TIES HAVE BEEN OBLITERATED. BLACK HAWK COUNTY WPA NOTES CALLS FOR [FOUND NIGGERHEAD 8" DIA. IRON ROD
1/2x1/2x33" C/M SET]. USPLSCC DATED 5/12/1997 RECORDED IN 325 MISC. 339 (BLACK HAWK COUNTY) CALLS FOR [FOUND
5/8" REBAR CENTERLINE OF BUTLER RD. (GRAVEL), ALIGNED WITH DATED WIRE FENCE TO WEST. REBAR LOCATED 2" DEEP
FROM ROAD SURFACE. PRIOR CHAINING NOTES NORTH TO N.W. CORNER OF SECTION = 2654.5' VS. 2654.51' EDM (4-97),
WITH NO RECORD OF PRIOR COUNTY TIES. CORNER UTILIZED FOR BRIDGE REPL. NORTH OF CORNER.] ALL REFERENCE TIES
BUT ONE HAVE BEEN OBLITERATED. FOUND NO. 5 REBAR FLUSH WITH SURFACE PER REMAINING TIE. LOWERED TO 0.3'
DEPTH AND UTILIZED AS CORNER.

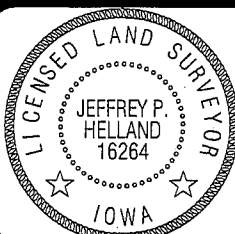
(SHOW A MINIMUM OF THREE REFERENCE TIES TO DURABLE PHYSICAL OBJECTS, RELEVANT MONUMENTS
AND PHYSICAL CONDITIONS THAT WILL ENABLE RECOVERY OF THE CORNER.)

PLAN VIEW



HELLAND ENGINEERING & SURVEYING, LTD.
1107 Technology Parkway
Cedar Falls, Iowa 50613-6951
(319)-266-0161

SHINER = 8D NAIL & 1 5/16"Ø METAL SHINER
BRASS TAG = 13/16"Ø BRASS TAG
OPC = PLASTIC CAP (O=ORANGE, R=RED, Y=YELLOW)
(00') RECORDED AS FILE NAME: 09-208C1.DWG



I hereby certify that this land surveying document was prepared
and the related survey work was performed by me or under my
direct personal supervision and that I am a duly licensed Land
Surveyor under the laws of the State of Iowa.

Jeffrey P. Helland 8/24/09
Jeffrey P. Helland
License Number 16264
My license renewal date is December 31, 2009.
All pages or sheets are covered by this seal except:

LIST CORNERS TO BE INDEXED

CORNER	SECTION	TOWNSHIP	RANGE
W 1/4 CORNER	31	89N	14W

Rec'd