

Misc ✓
INDEX *COF*
MARGIN
PROOF *or*
COMPASS *or*
County Auditor

BLACK HAWK COUNTY IOWA: SS
Filed for record May 15, 19 97 at
4:55 P.M. and recorded in Book 325
of Misc Page 339.
Patricia J. Liss Recorder
Fee N/C
BH COUNTY ENGINEER

21288

PREPARED BY: BLACK HAWK COUNTY ENGINEERS OFFICE
316 E. FIFTH STREET, ROOM 211 WATERLOO, IOWA 50703

PH.# (319) 291-2419
FAX.# (319) 291-2461
SLSI 9-94
CERT 12-96

UNITED STATES PUBLIC LAND SURVEY CORNER CERTIFICATE OF
Land Survey Monuments situated in Section 31, Township 89 N,
Range 14 W, of the Fifth Principal Meridian, BLACK HAWK County, Iowa.
Previously recorded in Book N/A, Page N/A, in County Recorder's Office.

(Show reason for preparing this certificate, the evidence and detailed procedures used in establishing the corner positions and monumentation found or placed.)

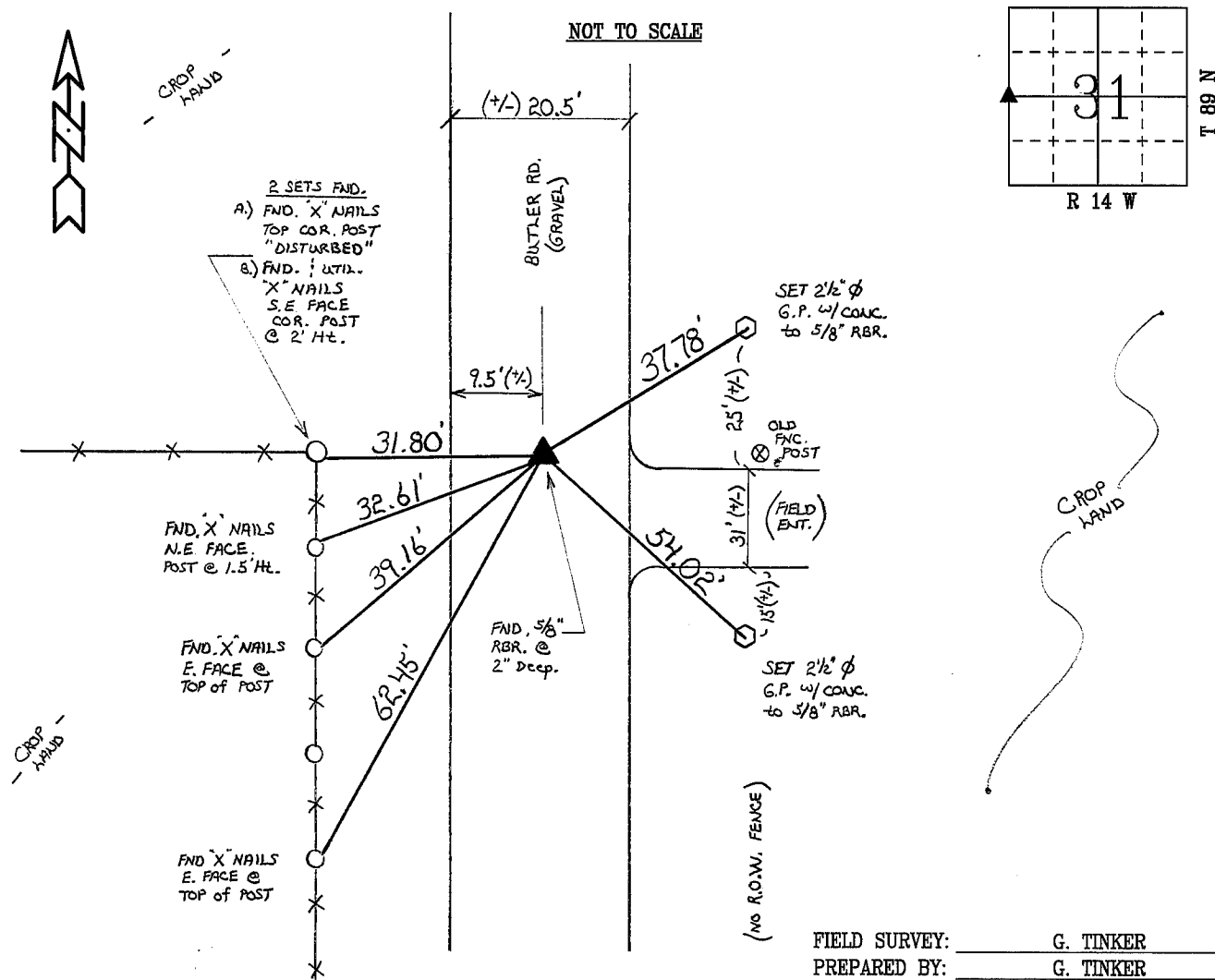
Monument Description and Remarks: FOUND 5/8" REBAR CENTERLINE OF
BUTLER RD. (GRAVEL), ALIGNED WITH DATED WIRE FENCE TO WEST.
REBAR LOCATED 2" DEEP FROM ROAD SURFACE.

PRIOR CHAINING NOTES NORTH TO N.W. CORNER OF SECTION = 2654.5' vs.
2654.51' EDM (4-97), WITH NO RECORD OF PRIOR COUNTY TIES.

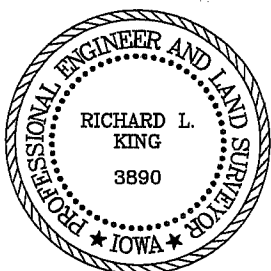
CORNER UTILIZED FOR BRIDGE REPL. NORTH OF CORNER.

PLAN - VIEW

(Show a minimum of three reference ties to durable physical objects, relevant monuments and physical conditions that will enable recovery of the corner.)



CERTIFICATION



I hereby certify that this land surveying document was prepared and the related survey work was performed by me or under my direct personal supervision and that I am a duly licensed Land Surveyor under the laws of the State of Iowa.

Richard L. King 5/12/97
Richard L. King (date)

License Number 3890

My license renewal date is December 31, 1997

Pages or sheets covered by this seal:

This Land Corner Certificate Only.

LIST CORNERS TO BE INDEXED

Corner Section - Township - Range

W. 1/4 31 89 N 14 W