

Prepared By: Matthew A. Kofta, P.L.S., VJ Engineering, 1501 Technology Parkway, Suite 100, Cedar Falls, Iowa, 50613, (319) 266-5829
Return To: Matthew A. Kofta, P.L.S., VJ Engineering, 1501 Technology Parkway, Suite 100, Cedar Falls, Iowa, 50613, (319) 266-5829

United States Public Land Survey Corner Certificate of

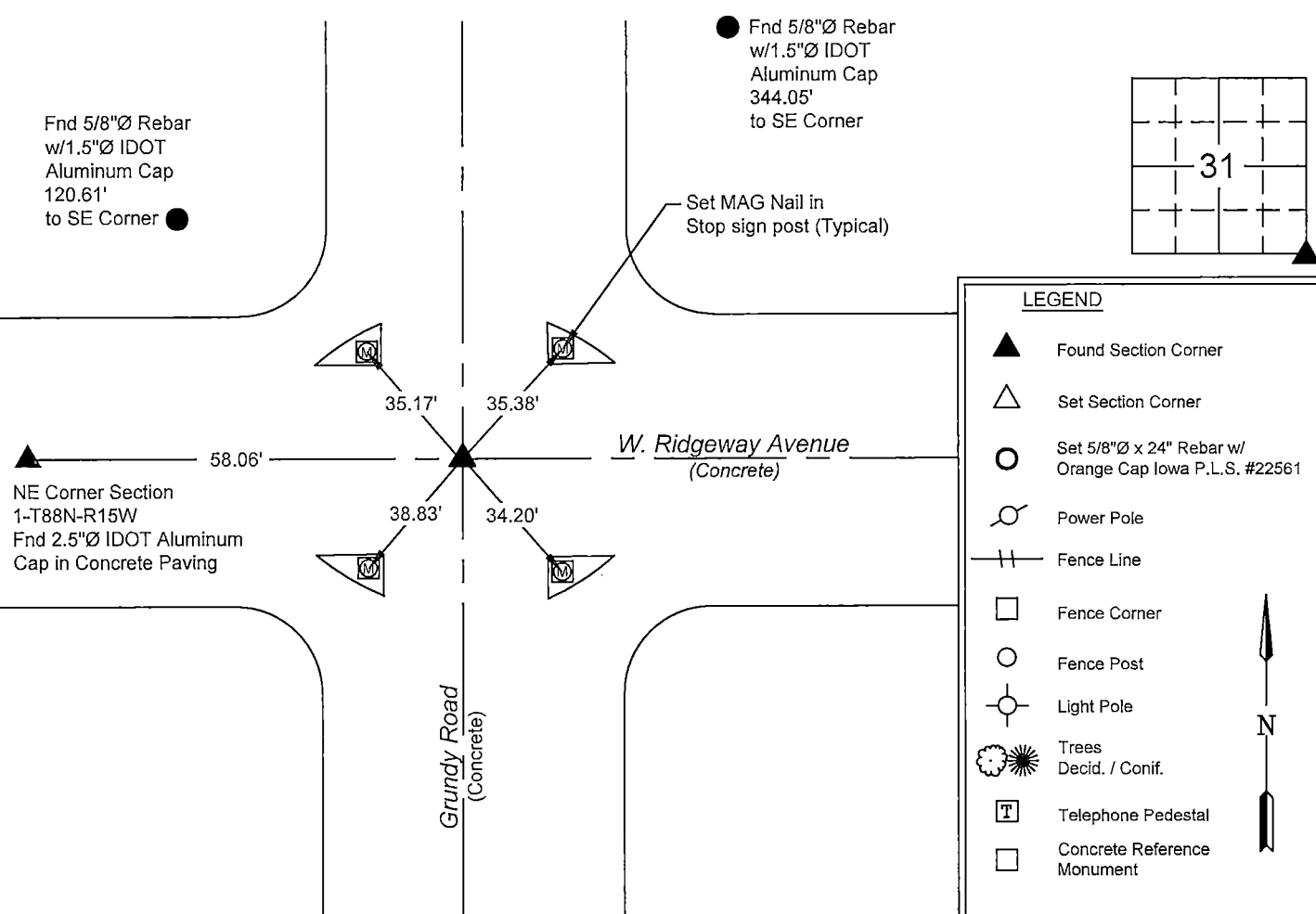
Land Survey Monuments situated in Section No. 31, Township No. 89 North,
Range No. 14 West, of the Fifth Principal Meridian, Black Hawk County, Iowa
Previously recorded in N/A.

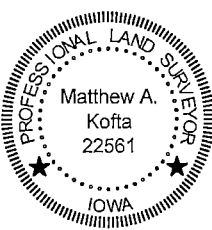
Show reason for preparing this certificate, the evidence and detailed procedures used in establishing the corner positions and monumentation found or placed.

Monument Description and Remarks: Southeast Corner – Section 31- T89N - R14W
File No. 2010-12889 utilizes the center of the core hole in the concrete for the corner location. Established location of corner based off of found R-O-W monuments which put the corner in the center of the core hole in the concrete.
Set 1/2"Ø x 8" Rebar in the core hole of the concrete. Corner is located at the center of the intersection of W. Ridgeway Ave. and Grundy Rd.
This corner certificate is being prepared as there is not currently one of record.

PLAN - VIEW

(Show a minimum of three reference ties to durable physical objects, relevant monuments and physical conditions that will enable recovery of the corner.)





I hereby certify that this land surveying document was prepared and the related survey work was performed by me or under my direct personal supervision and that I am a duly licensed Land Surveyor under the laws of the State of Iowa.

Matthew A. Kofta
Matthew A. Kofta, P.L.S.
License Number 22561
My license renewal date is December 31, 2022
Pages or sheets covered by this seal: 1

List Corner to be Indexed			
Corner	Section	Twp	Range
Southeast	31	89 N	14 W