

Reserved for County Recorder's Use.

Doc ID: 012010170001 Type: GEN  
Recorded: 09/20/2023 at 10:51:33 AM  
Fee Amt: \$7.00 Page 1 of 1  
Black Hawk County Iowa  
SANDIE L. SMITH RECORDER  
File **2024-00003987**

Kyle J. Helland, 6109 Chancellor Drive, Cedar Falls, Iowa 50613-6916, (319)-266-0161

# UNITED STATES PUBLIC LAND SURVEY CORNER CERTIFICATE OF

LAND SURVEY MONUMENTS SITUATED IN SECTION NO. 31, TOWNSHIP NO. 89 NORTH, RANGE  
NO. 14 WEST OF THE FIFTH PRINCIPAL MERIDIAN, BLACK HAWK COUNTY, IOWA.  
PREVIOUSLY RECORDED IN 325 MISC. 338

(SHOW REASON FOR PREPARING THIS CERTIFICATE, THE EVIDENCE AND DETAILED PROCEDURES USED IN ESTABLISHING THE  
CORNER POSITIONS AND MONUMENTATION FOUND OR PLACED.)

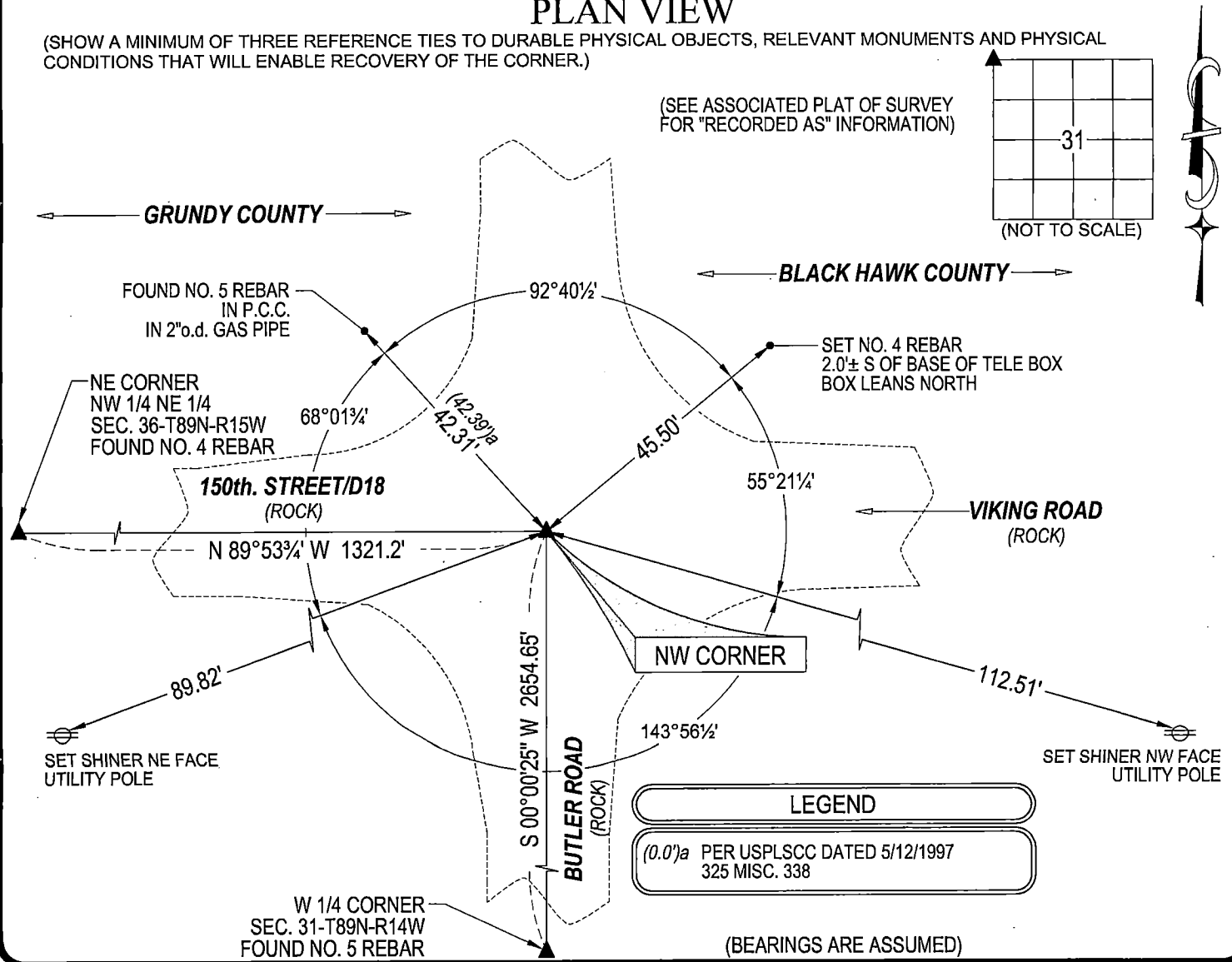
## MONUMENT DESCRIPTION AND REMARKS:

ONLY ONE REFERENCE TIE REMAINS. SURVEY COMPLETED IN THE E 1/2 OF SEC. 36-T89N-R15W.

→ **NW CORNER:** USPLSCC 325 MISC. 338 DATED 05/12/1997 CALLS FOR [FOUND 1/2" REBAR CENTERLINE OF  
INTERSECTION AT 3" DEEP FROM ROAD SURFACE. PRIOR COUNTY CHAINING NOTES DENOTE 1/2" x 31"L. IRON ROD  
OVER CONCRETE MONUMENT. PRIOR CHAINING NOTES SOUTH TO WEST 1/4 OF SECTION = 2654.5' vs. 2654.51' EDM  
(4-97), WITH NO RECORD OF PRIOR COUNTY TIES. CORNER UTILIZED FOR BRIDGE REPL. SOUTH OF CORNER.]  
SEARCHED AREA WITH MAGNETIC DETECTOR, EXCAVATED, AND FOUND NO. 4 REBAR 0.3' DEEP. LOCATION MATCHES  
DISTANCE TO LONE REMAINING TIE WITHIN REASON. UTILIZED SAID FOUND REBAR AS CORNER.

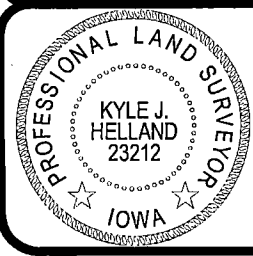
## PLAN VIEW

(SHOW A MINIMUM OF THREE REFERENCE TIES TO DURABLE PHYSICAL OBJECTS, RELEVANT MONUMENTS AND PHYSICAL  
CONDITIONS THAT WILL ENABLE RECOVERY OF THE CORNER.)



**HES** HELLAND ENGINEERING & SURVEYING, LTD.  
6109 Chancellor Drive  
Cedar Falls, Iowa 50613-6916  
(319)-266-0161

BRASS TAG = 4d. NAIL & 13/16"Ø BRASS TAG DRAWN BY: KDA  
SHINER = 1"Ø STEEL SHINER w/MASONRY NAIL  
OPC = PLASTIC CAP (O=ORANGE, R=RED, Y=YELLOW)  
(00') RECORDED AS FILE NAME: 23-179-3127.DWG



I hereby certify that this land surveying document was prepared  
and the related survey work was performed by me or under my  
direct personal supervision and that I am a duly licensed  
Professional Land Surveyor under the laws of the State of Iowa.  
*Kyle J. Helland* 09/20/2023  
License Number 23212  
My license renewal date is December 31, 2023.  
All pages or sheets are covered by this seal except:

LIST CORNERS TO BE INDEXED			
CORNER	SECTION	TOWNSHIP	RANGE
NW CORNER	31	89N	14W
SW CORNER	30	89N	14W

(1)