

21287

PH.# (319) 291-2419 SLSI 9-94
FAX.# (319) 291-2461 CERT 12-96

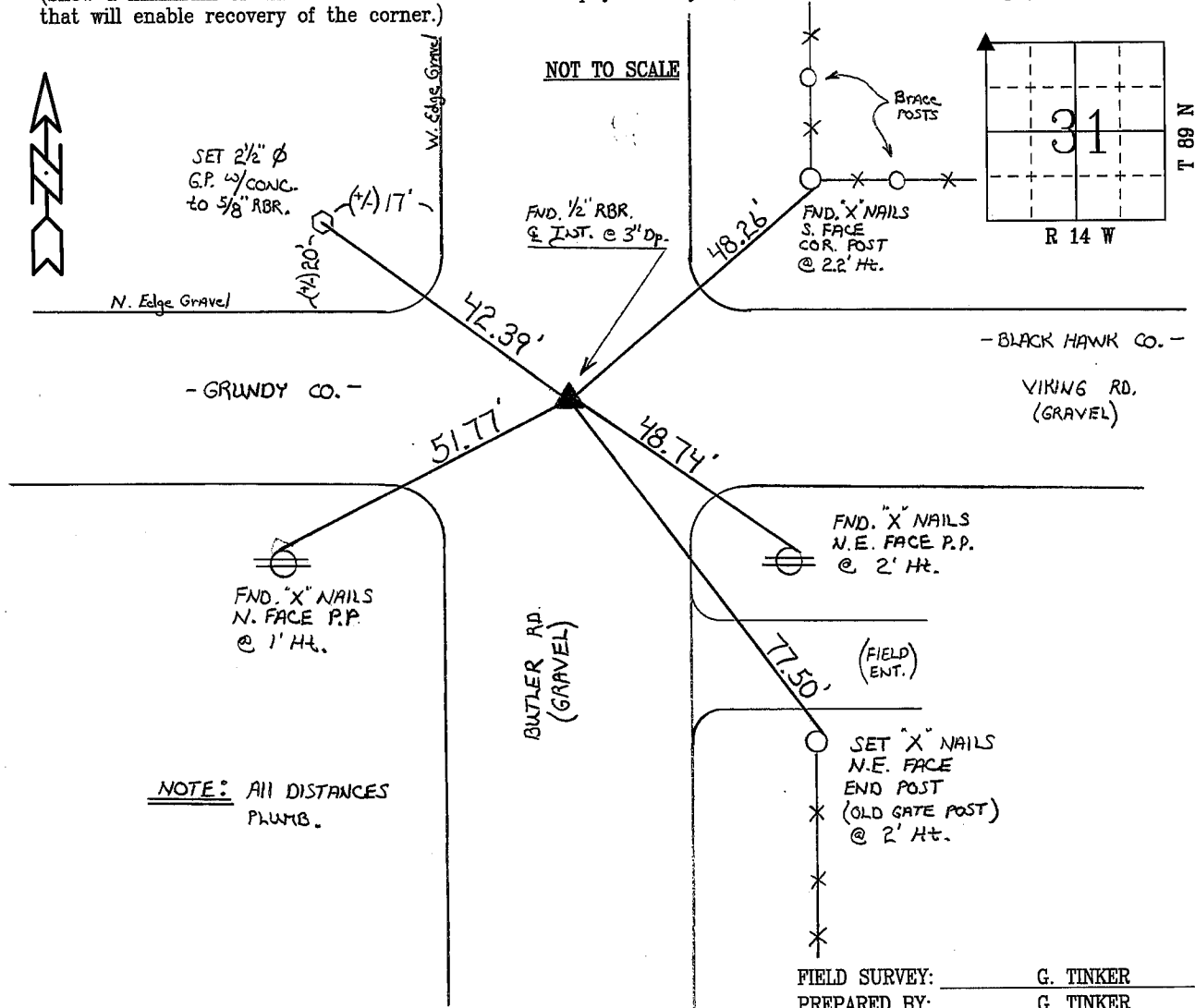
UNITED STATES PUBLIC LAND SURVEY CORNER CERTIFICATE OF
Land Survey Monuments situated in Section 31 , Township 89 N ,
Range 14 W , of the Fifth Principal Meridian, BLACK HAWK County, Iowa.
Previously recorded in Book N/A , Page N/A , in County Recorder's Office.

(Show reason for preparing this certificate, the evidence and detailed procedures used in establishing the corner positions and monumentation found or placed.)

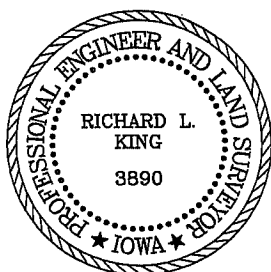
Monument Description and Remarks: FOUND 1/2" REBAR CENTERLINE OF INTERSECTION AT 3' DEEP FROM ROAD SURFACE. PRIOR COUNTY CHAINING NOTES DENOTE 1/2" x 31'L. IRON ROD OVER CONCRETE MONUMENT. PRIOR CHAINING NOTES SOUTH TO WEST 1/4 OF SECTION = 2654.5' vs. 2654.51' EDM (4-97), WITH NO RECORD OF PRIOR COUNTY TIES. CORNER UTILIZED FOR BRIDGE REPL. SOUTH OF CORNER.

PLAN - VIEW

(Show a minimum of three reference ties to durable physical objects, relevant monuments and physical conditions that will enable recovery of the corner.)



CERTIFICATION



I hereby certify that this land surveying document was prepared and the related survey work was performed by me or under my direct personal supervision and that I am a duly licensed Land Surveyor under the laws of the State of Iowa.

Richard L King 5/12/97
Richard L. King (date)

License Number 3890

My license renewal date is December 31, 1997

Pages or sheets covered by this seal:
This Land Corner Certificate Only.

LIST CORNERS TO BE INDEXED

Corner Section - Township - Range

N.W. COR. 31 89 N 14 W

BOOK 325 PAGE 338