

Jeffrey P. Helland, 1107 Technology Parkway, Cedar Falls, Iowa 50613-6951, (319)-266-0161

UNITED STATES PUBLIC LAND SURVEY CORNER CERTIFICATE OF

LAND SURVEY MONUMENTS SITUATED IN SECTION NO. 31, TOWNSHIP NO. 89 NORTH, RANGE
NO. 14 WEST OF THE FIFTH PRINCIPAL MERIDIAN, BLACK HAWK COUNTY, IOWA.
PREVIOUSLY RECORDED IN 327 MISC. 510

(SHOW REASON FOR PREPARING THIS CERTIFICATE, THE EVIDENCE AND DETAILED PROCEDURES USED IN ESTABLISHING THE
CORNER POSITIONS AND MONUMENTATION FOUND OR PLACED.)

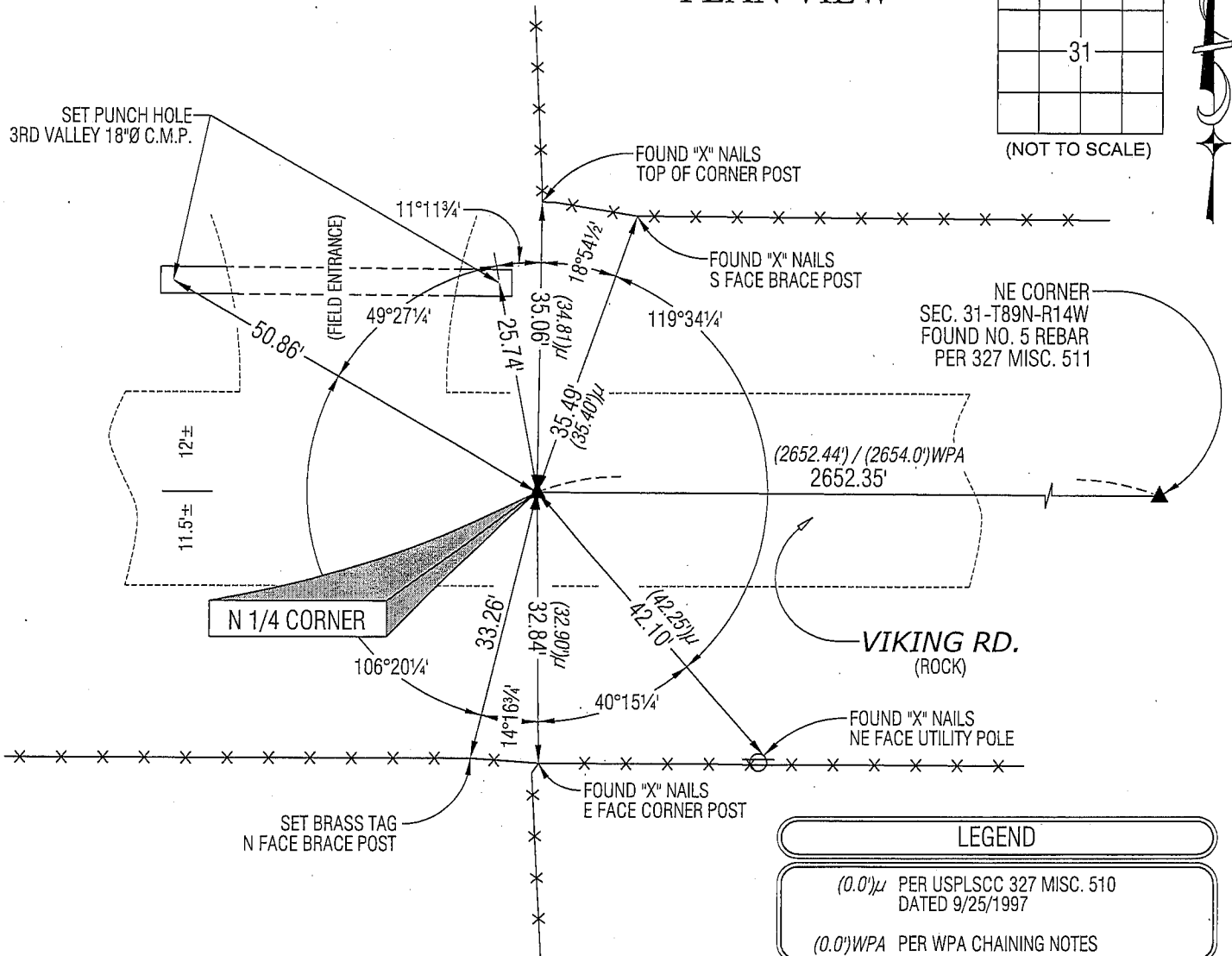
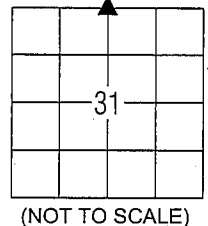
MONUMENT DESCRIPTION AND REMARKS:

USPLSCC 327 MISC. 510 REFERENCE TIES HAVE CHANGED. SURVEY COMPLETED IN THE NE 1/4 OF SEC. 31-T89N-R14W.

→ **N 1/4 CORNER:** W.P.A. CHAINING NOTES (NO DATE) CALLS FOR [FOUND REINFORCING BAR 1"x22" C/M SET.]. USPLSCC
MISC. BOOK 327 PAGE 510 DATED 9/25/1997 CALLS FOR [FOUND 1/2" REBAR 36"L. TOP BENT ± CL VIKING RD. ALIGNED W/
N-S FENCE'S. REF. ED AND REPLACED W/ 5/8" REBAR LOC. 2" DEEP. FOUND AND UTIL. 5 PREV. SETS OF TIES AND EST. 1
NEW TIE DENOTED. EXIST. CO. TIES OCT. 1939, ± ERRORS IF SAME? POSITION HELD DUE TO NATURE OF THAT FOUND.].
FOUND NO. 5 REBAR LEANING 10° SELY FROM ZENITH. REMOVED SAID NO. 5 REBAR (2' LONG) AND FOUND STANDARD
CONCRETE MONUMENT WITH BRASS CAP 1.5' DEEP. CUT NO. 5 REBAR TO 1.25' LENGTH AND SET OVER TOP CENTER OF
FOUND C.M. (TOP OF REBAR WHEN FOUND WAS OVER C.M.).

(SHOW A MINIMUM OF THREE REFERENCE TIES TO DURABLE PHYSICAL OBJECTS, RELEVANT MONUMENTS AND PHYSICAL
CONDITIONS THAT WILL ENABLE RECOVERY OF THE CORNER.)

PLAN VIEW



LEGEND

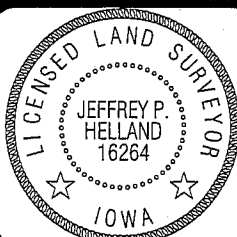
(0.0') ± PER USPLSCC 327 MISC. 510
DATED 9/25/1997

(0.0') WPA PER WPA CHAINING NOTES



HELLAND ENGINEERING & SURVEYING, LTD.
1107 Technology Parkway
Cedar Falls, Iowa 50613-6951
(319)-266-0161

SHINER = 8D NAIL & 1 5/16"Ø METAL SHINER
BRASS TAG = 13/16"Ø BRASS TAG
OPC = PLASTIC CAP (O=ORANGE, R=RED, Y=YELLOW)
(00') RECORDED AS FILE NAME: 09-208C2.DWG



I hereby certify that this land surveying document was prepared
and the related survey work was performed by me or under my
direct personal supervision and that I am a duly licensed Land
Surveyor under the laws of the State of Iowa.

Jeffrey P. Helland 8/24/09
Jeffrey P. Helland
License Number 16264
My license renewal date is December 31, 2009.
All pages or sheets are covered by this seal except:

LIST CORNERS TO BE INDEXED

CORNER	SECTION	TOWNSHIP	RANGE
N 1/4 CORNER	31	89N	14W
S 1/4 CORNER	30	89N	14W

Rec.