

SC
Misc
INDEX 98
MARGIN
PROOF
COMPARE

BLACK HAWK COUNTY IOWA: SS
Filed for record Oct 1, 1997 at
4:00 P.M. and recorded in Book 327
of Misc Page 510

County Recorder
6625

Patricia S. Soss Recorder
Fee N/C
ENGINEER'S OFFICE

PREPARED BY: BLACK HAWK COUNTY ENGINEERS OFFICE
316 E. FIFTH STREET, ROOM 211 WATERLOO, IOWA 50703

PH.# (319) 291-2419
FAX# (319) 291-2461

SLSI 9-94
CERT 12-96

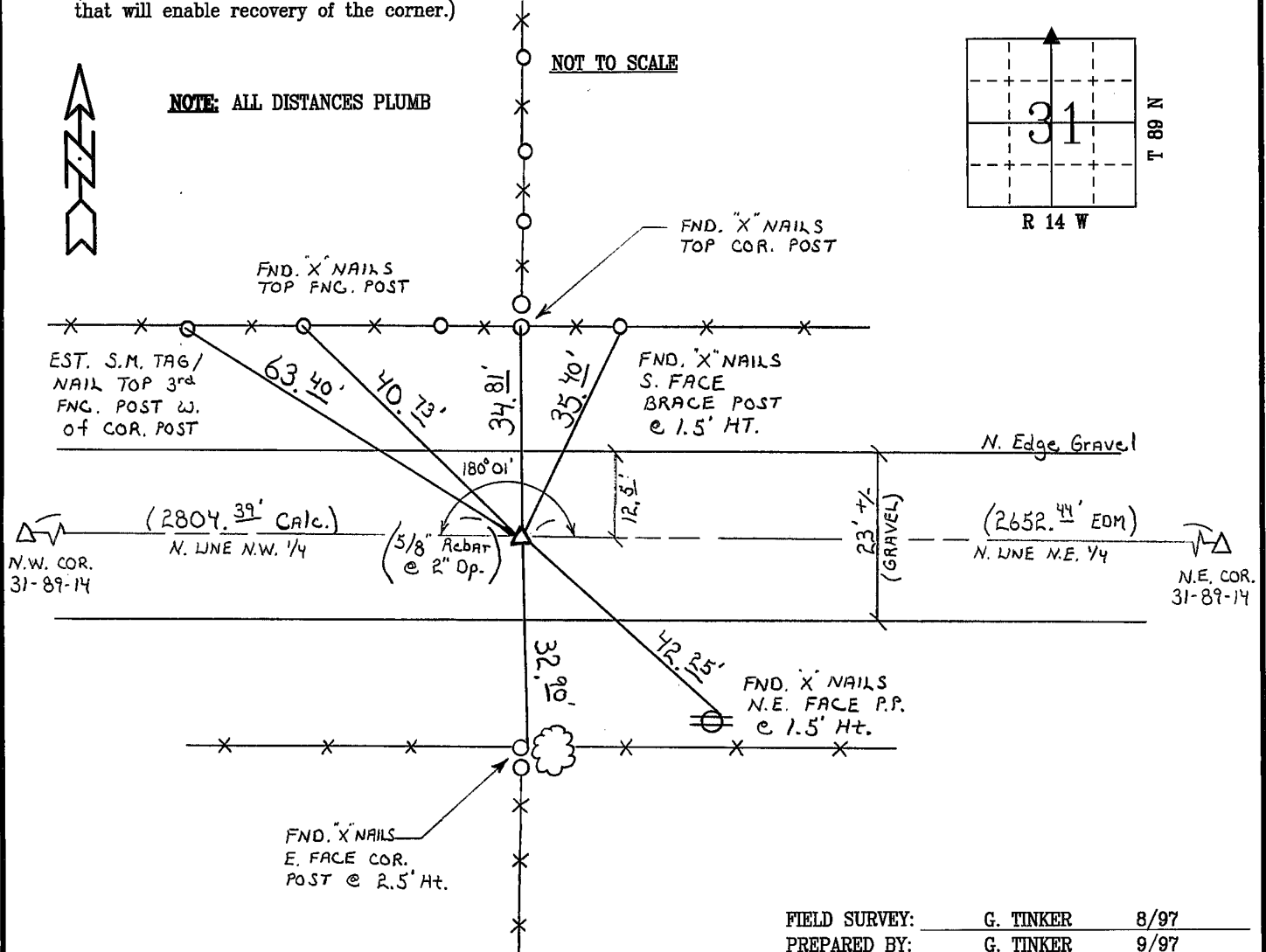
UNITED STATES PUBLIC LAND SURVEY CORNER CERTIFICATE OF
Land Survey Monuments situated in Section 31, Township 89 N,
Range 14 W, of the Fifth Principal Meridian, BLACK HAWK County, Iowa.
Previously recorded in Book N/A, Page N/A, in County Recorder's Office.

(Show reason for preparing this certificate, the evidence and detailed procedures used in establishing the corner positions and monumentation found or placed.)

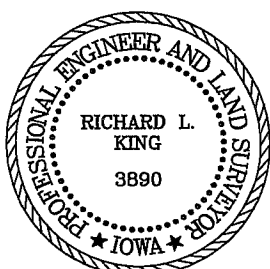
Monument Description and Remarks: FOUND 1/2" REBAR 36" L. TOP BENT
+/- CL VIKING RD. ALIGNED W/ N-S FENCE'S. REF'ED AND REPLACED W/
5/8" REBAR LOC. 2" DEEP. FOUND AND UTIL. 5 PREV. SETS OF TIES AND
EST. 1 NEW TIE DENOTED. EXIST. CO. TIES OCT. 1939, +/- ERRORS IF SAME?
POSITION HELD DUE TO NATURE OF THAT FOUND. NOTE: 0°01' DEFL. RT. W. to E.
CERT. FILED FOR R.O.W. ACQ. @ CO. BRIDGE N. LINE, NW 1/4, NW 1/4.

PLAN - VIEW

(Show a minimum of three reference ties to durable physical objects, relevant monuments and physical conditions that will enable recovery of the corner.)



CERTIFICATION



I hereby certify that this land surveying document was prepared and the related survey work was performed by me or under my direct personal supervision and that I am a duly licensed Land Surveyor under the laws of the State of Iowa.

Richard L. King 9/25/97
Richard L. King (date)

License Number 3890

My license renewal date is December 31, 1997

Pages or sheets covered by this seal:

This Land Corner Certificate Only.

LIST CORNERS TO BE INDEXED

Corner	Section	Township	Range
N. 1/4	31	89 N	14 W