

Prepared By: Matthew A. Kofta, P.L.S., VJ Engineering, 1501 Technology Parkway, Suite 100, Cedar Falls, Iowa, 50613, (319) 266-5829
Return To: Matthew A. Kofta, P.L.S., VJ Engineering, 1501 Technology Parkway, Suite 100, Cedar Falls, Iowa, 50613, (319) 266-5829

United States Public Land Survey Corner Certificate of

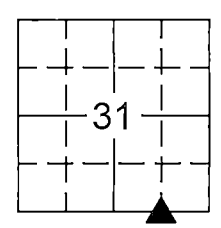
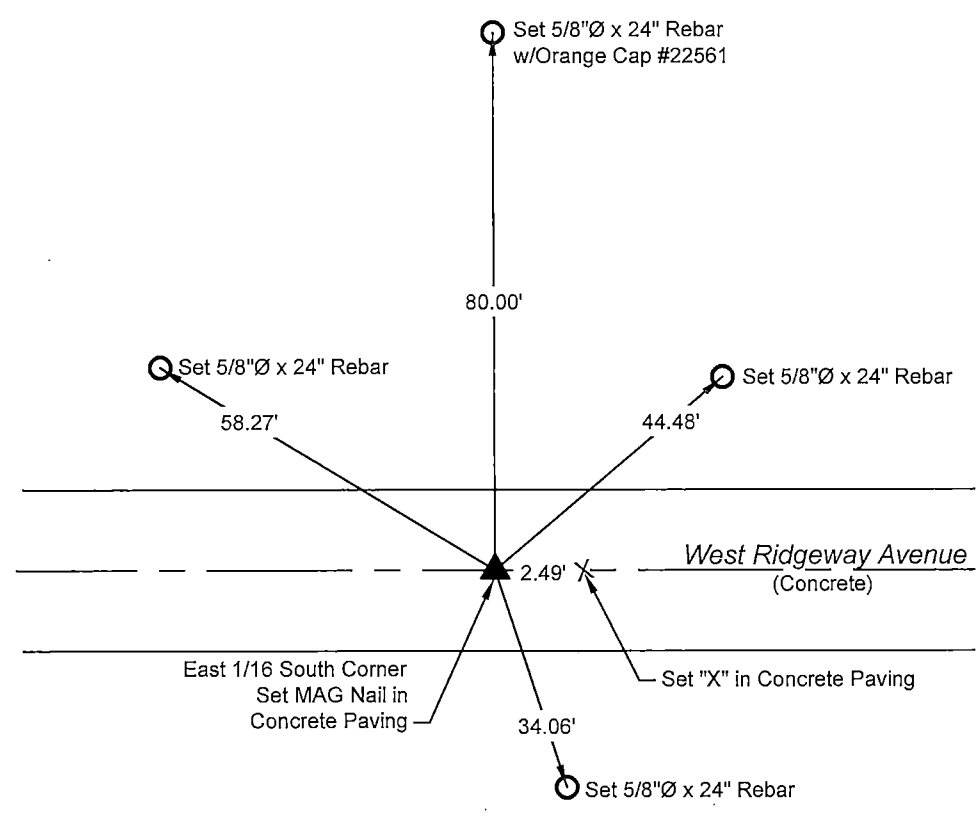
Land Survey Monuments situated in Section No. 31, Township No. 89 North,
Range No. 14 West, of the Fifth Principal Meridian, Black Hawk County, Iowa
Previously recorded in N/A.

Show reason for preparing this certificate, the evidence and detailed procedures used in establishing the corner positions and monumentation found or placed.

Monument Description and Remarks: East 1/16 South Corner -- Section 31- T89N - R14W
No record found that the corner had been monumented. Set a MAG Nail in the Concrete Paving equidistant between the South 1/4 Corner and the Southeast Corner of Section 31-T89N-R14W.
This corner certificate is being prepared as there is not currently one of record.

PLAN - VIEW

(Show a minimum of three reference ties to durable physical objects, relevant monuments and physical conditions that will enable recovery of the corner.)



LEGEND

Found Section Corner

Set Section Corner

Set 5/8"Ø x 24" Rebar w/
Orange Cap Iowa P.L.S. #22561

Power Pole

Fence Line

Fence Corner

Fence Post

Light Pole

Trees
Decid. / Conif.

Telephone Pedestal

Concrete Reference
Monument

I hereby certify that this land surveying document was prepared and the related survey work was performed by me or under my direct personal supervision and that I am a duly licensed Land Surveyor under the laws of the State of Iowa.

Matthew A. Kofta, P.L.S.
License Number 22561
My license renewal date is December 31, 2022
Pages or sheets covered by this seal: 2-11-21 / 1

| List Corner to be Indexed | | | |
|---------------------------|---------|------|-------|
| Corner | Section | Twp | Range |
| East 1/16 South | 31 | 89 N | 14 W |

VJ Engineering
1501 Technology Parkway
Cedar Falls, Iowa - 319-266-5829

Section Corner
Reference Ties

file no.
208031

drawn by
MAK

date
2/11/21