

PAUL HELLAND

Jeffrey P. Helland, 1107 Technology Parkway, Cedar Falls, Iowa 50613-6951, (319)-266-0161

UNITED STATES PUBLIC LAND SURVEY CORNER CERTIFICATE
OFLAND SURVEY MONUMENTS SITUATED IN SECTION NO. 30, TOWNSHIP NO. 89 NORTH, RANGE
NO. 14 WEST OF THE FIFTH PRINCIPAL MERIDIAN, BLACK HAWK COUNTY, IOWA.

PREVIOUSLY RECORDED IN BOOK _____, PAGE _____.

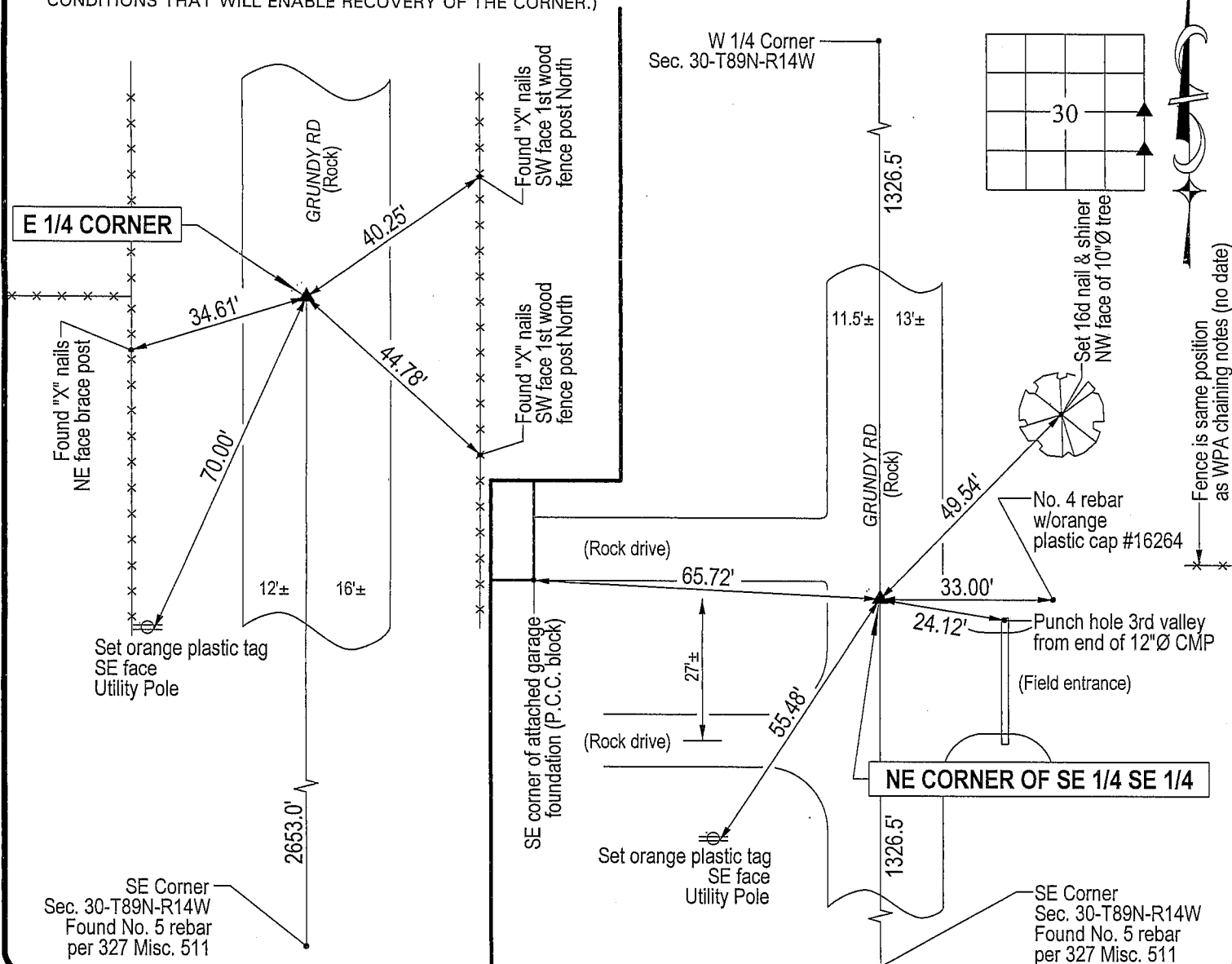
(SHOW REASON FOR PREPARING THIS CERTIFICATE, THE EVIDENCE AND DETAILED PROCEDURES USED IN ESTABLISHING THE
CORNER POSITIONS AND MONUMENTATION FOUND OR PLACED.)

MONUMENT DESCRIPTION AND REMARKS:

No corner certificate on file. Survey completed in the SW 1/4 of Sec. 29-T89N-R14W.

- E 1/4 CORNER: WPA notes call for a (concrete monument w/brass cap). Found 1"o.d. iron pipe (1' long) 0.3' deep, continued excavation and found concrete monument w/brass cap 1.3' directly beneath 1"o.d. iron pipe. Replaced 1"o.d. iron pipe above concrete monument.
- NE CORNER of SE 1/4 SE 1/4: No Black Hawk County Engineer reference ties exist. Set No. 4 rebar w/orange plastic cap #16264 at the midpoint of the East line of the SE 1/4 of Sec. 30-T89N-R14W. Corner lines up w/extension of fence from the West.

PLAN VIEW

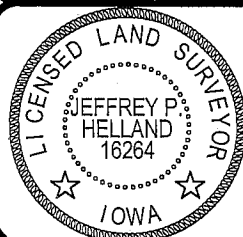
(SHOW A MINIMUM OF THREE REFERENCE TIES TO DURABLE PHYSICAL OBJECTS, RELEVANT MONUMENTS AND PHYSICAL
CONDITIONS THAT WILL ENABLE RECOVERY OF THE CORNER.)

HELLAND ENGINEERING & SURVEYING, LTD.

1107 Technology Parkway
Cedar Falls, Iowa 50613-6951
(319)-266-0161

(00.00') - Recorded As

File Name: 04-187c1.drg

I hereby certify that this land surveying document was prepared
and the related survey work was performed by me or under my
direct personal supervision and that I am a duly licensed Land
Surveyor under the laws of the State of Iowa.*Jeffrey P. Helland 5/14/04*
Jeffrey P. Helland
License Number 16264My license renewal date is December 31, 2005.
All pages or sheets are covered by this seal except:

LIST CORNERS TO BE INDEXED

CORNER	SECTION	TOWNSHIP	RANGE
E 1/4 CORNER	30	89N	14W
NE CORNER SE 1/4 SE 1/4	30	89N	14W