

Reserved for County Recorder's use.

Kyle J. Helland, 6109 Chancellor Drive, Cedar Falls, Iowa 50613-6916, (319)-266-0161

## UNITED STATES PUBLIC LAND SURVEY CORNER CERTIFICATE OF

LAND SURVEY MONUMENTS SITUATED IN SECTION NO. 28, TOWNSHIP NO. 89 NORTH, RANGE  
NO. 14 WEST OF THE FIFTH PRINCIPAL MERIDIAN, BLACK HAWK COUNTY, IOWA.  
PREVIOUSLY RECORDED IN N/A

(SHOW REASON FOR PREPARING THIS CERTIFICATE, THE EVIDENCE AND DETAILED PROCEDURES USED IN ESTABLISHING THE  
CORNER POSITIONS AND MONUMENTATION FOUND OR PLACED.)

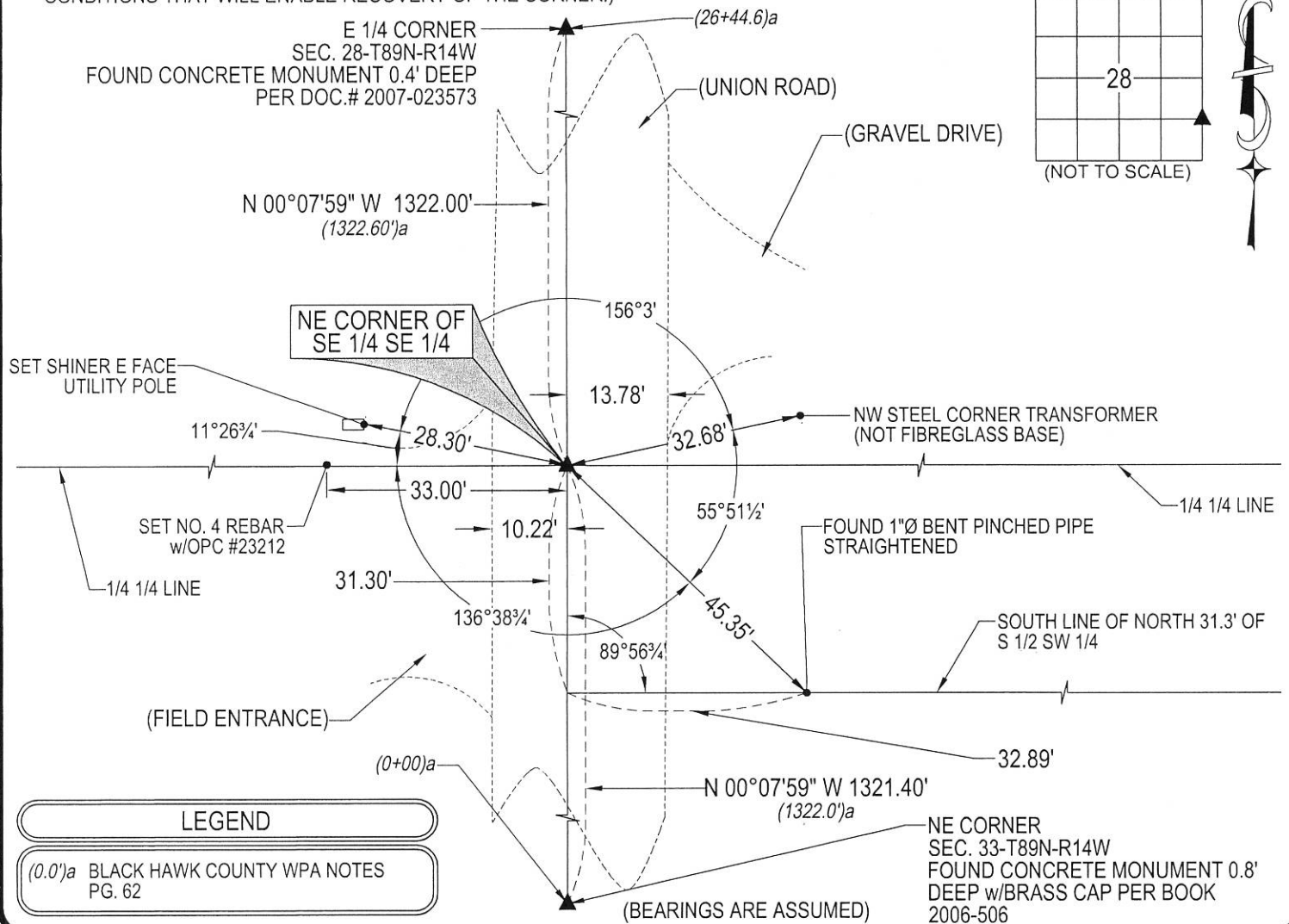
### MONUMENT DESCRIPTION AND REMARKS:

NO USPLSCC ON FILE. SURVEY COMPLETED IN THE SE 1/4 OF SEC. 28-T89N-R14W.

→ **NE CORNER SE 1/4 SE 1/4:** NO COUNTY TIES AVAILABLE. WPA NOTES, UNDATED, SHOWS FENCE LINE WEST AT  
STATIONING 13+22.0. SEARCHED AREA AND FOUND NOTHING. UNRECORDED SURVEY SHOWS 1/4 1/4 LINE ESTABLISHED  
IN THE SW 1/4 OF SEC. 27 AND THE SOUTH LINE OF THE "NORTH 31.3" OF THE SOUTH 1/2 OF THE SOUTHWEST QUARTER  
BEING MONUMENTED BY A PIPE ALONG THE EASTERLY ROW OF UNION ROAD. FOUND SAID PIPE BENT AND  
STRAIGHTENED. UTILIZING SAID PIPE FOR NORTHING AND SECTION LINE FOR EASTING AND SET 1/2" REBAR #23212.  
LOCATION FIT THAT OF PRORATED DISTANCE OF WPA NOTES CALLED FOR 1/4 1/4 FENCE LINE WEST.

### PLAN VIEW

(SHOW A MINIMUM OF THREE REFERENCE TIES TO DURABLE PHYSICAL OBJECTS, RELEVANT MONUMENTS AND PHYSICAL  
CONDITIONS THAT WILL ENABLE RECOVERY OF THE CORNER.)



**HES** HELLAND ENGINEERING & SURVEYING, LTD.  
6109 Chancellor Drive  
Cedar Falls, Iowa 50613-6916  
(319)-266-0161

BRASS TAG = 4d. NAIL & 13/16"Ø BRASS TAG DRAWN BY: KDA  
SHINER = 1"Ø STEEL SHINER w/MASONRY NAIL  
OPC = PLASTIC CAP (O=ORANGE, R=RED, Y=YELLOW)  
(00') RECORDED AS FILE NAME: 20-145-42.DWG



I hereby certify that this land surveying document was prepared  
and the related survey work was performed by me or under my  
direct personal supervision and that I am a duly licensed  
Professional Land Surveyor under the laws of the State of Iowa.

*Kyle J. Helland* 06/12/2020  
Kyle J. Helland  
License Number 23212  
My license renewal date is December 31, 2021.  
All pages or sheets are covered by this seal except:

### LIST CORNERS TO BE INDEXED

CORNER	SECTION	TOWNSHIP	RANGE
NE COR. SE 1/4 SE 1/4	28	89N	14W
SE COR. NE 1/4 SE 1/4	28	89N	14W
SW COR. NW 1/4 SW 1/4	27	89N	14W
NW COR. SW 1/4 SW 1/4	27	89N	14W