



Doc ID: 007178630001 Type: GEN  
Recorded: 10/19/2016 at 10:49:18 AM  
Fee Amt: \$7.00 Page 1 of 1  
Black Hawk County Iowa  
SANDIE L. SMITH RECORDER

File 2017-00007496

Reserved for County Recorder's use.

Kyle J. Helland, 1107 Technology Parkway, Cedar Falls, Iowa 50613-6951, (319)-266-0161

## UNITED STATES PUBLIC LAND SURVEY CORNER CERTIFICATE OF

LAND SURVEY MONUMENTS SITUATED IN SECTION NO. 28, TOWNSHIP NO. 89 NORTH, RANGE  
NO. 14 WEST OF THE FIFTH PRINCIPAL MERIDIAN, BLACK HAWK COUNTY, IOWA.  
PREVIOUSLY RECORDED IN 301 MISC. 916.

(SHOW REASON FOR PREPARING THIS CERTIFICATE, THE EVIDENCE AND DETAILED PROCEDURES USED IN ESTABLISHING THE  
CORNER POSITIONS AND MONUMENTATION FOUND OR PLACED.)

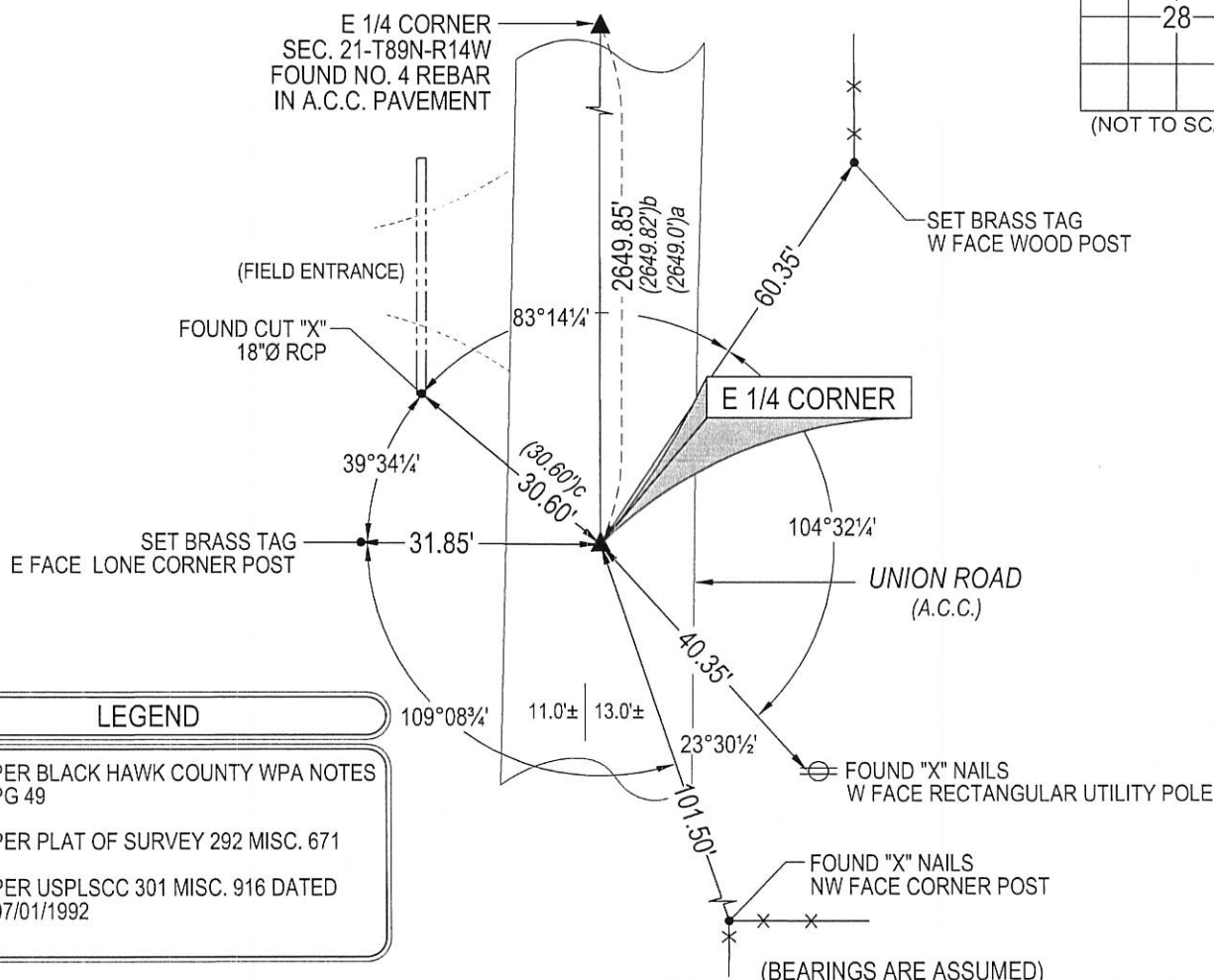
MONUMENT DESCRIPTION AND REMARKS:

MONUMENTATION HAS CHANGED. SURVEY COMPLETED IN THE SE 1/4 OF SEC. 21-T89N-R14W.

→ **NE CORNER:** USPLSCC 301 MISC. 916 CALLS FOR [FOUND 1/2" REBAR w/ #6505 CAP 0.3' DEEP IN GRAVEL  
ROAD.]. SET "COTTON GIN" SPIKE OVER FAINT SOUNDING IN A.C.C. PAVEMENT PER LONE REMAINING TIE  
OF SAID 301 MISC. 916 AND DISTANCE SOUTH FROM THE EAST 1/4 CORNER SEC. 21-T89N-R14W AS  
RECORDED IN LAURAL RIDGE MINOR PLAT 292 MISC. 671.

### PLAN VIEW

(SHOW A MINIMUM OF THREE REFERENCE TIES TO DURABLE PHYSICAL OBJECTS, RELEVANT MONUMENTS AND PHYSICAL  
CONDITIONS THAT WILL ENABLE RECOVERY OF THE CORNER.)



#### LEGEND

- (0.0')a PER BLACK HAWK COUNTY WPA NOTES  
PG 49
- (0.0')b PER PLAT OF SURVEY 292 MISC. 671
- (0.0')c PER USPLSCC 301 MISC. 916 DATED  
07/01/1992



HELLAND ENGINEERING & SURVEYING, LTD.  
1107 Technology Parkway  
Cedar Falls, Iowa 50613-6951  
(319)-266-0161

SHINER = 8d. NAIL & 1 5/16"Ø METAL SHINER DRAWN BY: SMN  
BRASS TAG = 8d. NAIL & 13/16"Ø BRASS TAG  
OPC = PLASTIC CAP (O=ORANGE, R=RED, Y=YELLOW)  
(00') RECORDED AS FILE NAME: 16-196-23.DWG



I hereby certify that this land surveying document was prepared  
and the related survey work was performed by me or under my  
direct personal supervision and that I am a duly licensed  
Professional Land Surveyor under the laws of the State of Iowa.

Kyle J. Helland  
License Number 23212  
My license renewal date is December 31, 2017.  
All pages or sheets are covered by this seal except:

#### LIST CORNERS TO BE INDEXED

CORNER	SECTION	TOWNSHIP	RANGE
NE CORNER	28	89N	14W
SE CORNER	21	89N	14W
SW CORNER	22	89N	14W
NW CORNER	27	89N	14W