

*Jeffrey P. Helland*

PAUL HELLAND

APR 23 2004

2004 39635

Jeffrey P. Helland, 1107 Technology Parkway, Cedar Falls, Iowa 50613-6951, (319)-266-0161

UNITED STATES PUBLIC LAND SURVEY CORNER CERTIFICATE  
OFLAND SURVEY MONUMENTS SITUATED IN SECTION NO. 28, TOWNSHIP NO. 89 NORTH, RANGE  
NO. 14 WEST OF THE FIFTH PRINCIPAL MERIDIAN, BLACK HAWK COUNTY, IOWA.

PREVIOUSLY RECORDED IN BOOK \_\_\_\_\_, PAGE \_\_\_\_\_.

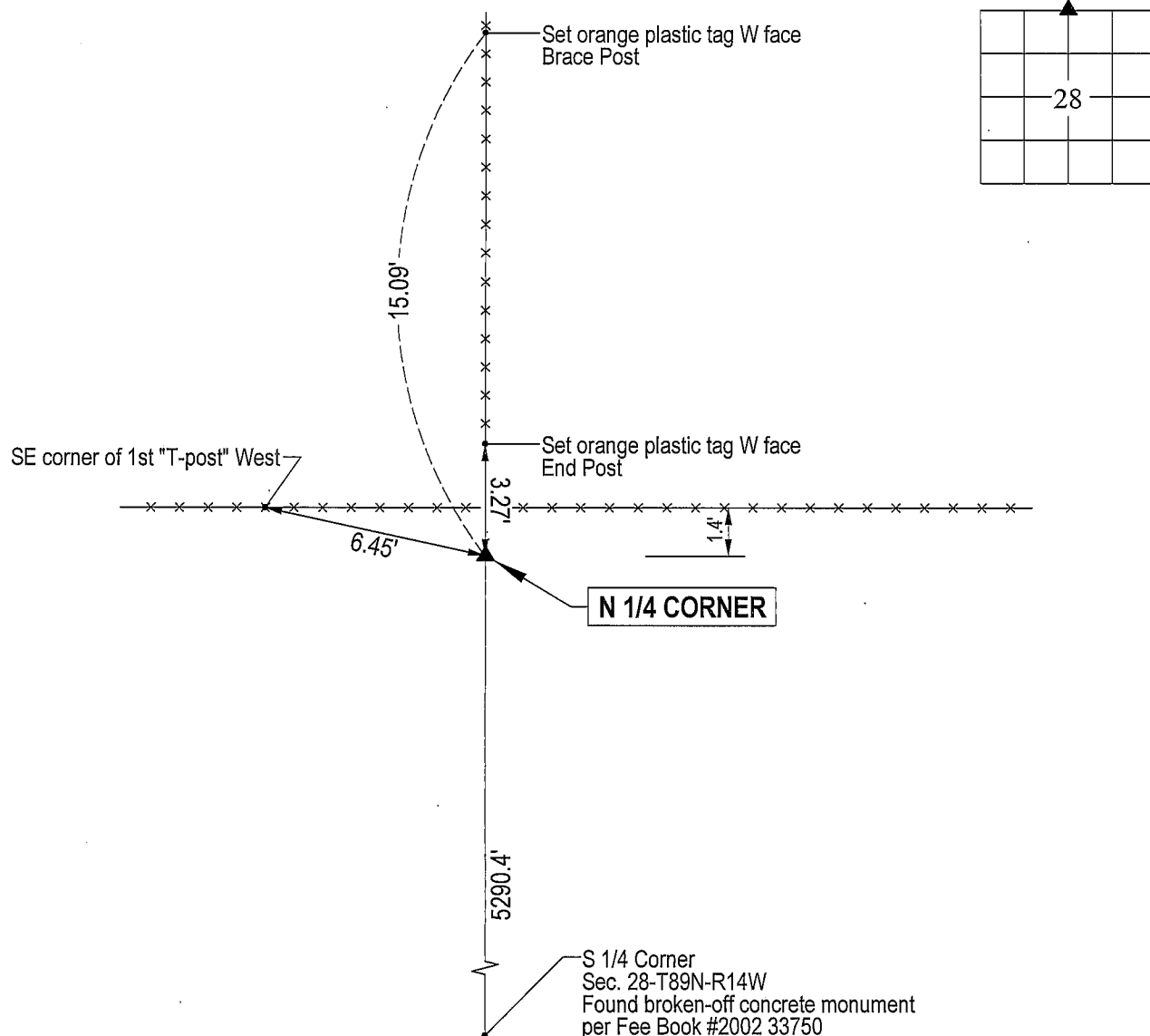
(SHOW REASON FOR PREPARING THIS CERTIFICATE, THE EVIDENCE AND DETAILED PROCEDURES USED IN ESTABLISHING THE  
CORNER POSITIONS AND MONUMENTATION FOUND OR PLACED.)

## MONUMENT DESCRIPTION AND REMARKS:

No corner certificate on file. Survey completed in the SW 1/4 of Sec. 28-T89N-R14W.

N 1/4 CORNER: Black Hawk County Engineer reference ties (dated 11/1/1941) calls for (C.M. with cap marked). All three  
ties obliterated. Found standard concrete monument w/brass cap labeled " 21 " leaning Northerly 20° from zenith.  
Straightened entire monument, top of c.m. is 0.4' above grade.  $\frac{21}{28}$ 

## PLAN VIEW

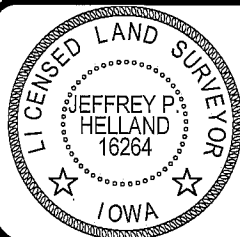
(SHOW A MINIMUM OF THREE REFERENCE TIES TO DURABLE PHYSICAL OBJECTS, RELEVANT MONUMENTS AND PHYSICAL  
CONDITIONS THAT WILL ENABLE RECOVERY OF THE CORNER.)

HELLAND ENGINEERING &amp; SURVEYING, LTD.

1107 Technology Parkway  
Cedar Falls, Iowa 50613-6951  
(319)-266-0161

(00.00') - Recorded As

File Name: 04-163c1.drg

I hereby certify that this land surveying document was prepared  
and the related survey work was performed by me or under my  
direct personal supervision and that I am a duly licensed Land  
Surveyor under the laws of the State of Iowa.*Jeffrey P. Helland* 4/5/04Jeffrey P. Helland  
License Number 16264

My license renewal date is December 31, 2005.

All pages or sheets are covered by this seal except:

CORNER	SECTION	TOWNSHIP	RANGE
N 1/4 CORNER	28	89N	14W

Eng.