

Reserved for County Recorder's use.

Kyle J. Helland, 6109 Chancellor Drive, Cedar Falls, Iowa 50613-6916, (319)-266-0161

UNITED STATES PUBLIC LAND SURVEY CORNER CERTIFICATE OF

LAND SURVEY MONUMENTS SITUATED IN SECTION NO. 28, TOWNSHIP NO. 89 NORTH, RANGE
NO. 14 WEST OF THE FIFTH PRINCIPAL MERIDIAN, BLACK HAWK COUNTY, IOWA.
PREVIOUSLY RECORDED IN N/A

(SHOW REASON FOR PREPARING THIS CERTIFICATE, THE EVIDENCE AND DETAILED PROCEDURES USED IN ESTABLISHING THE
CORNER POSITIONS AND MONUMENTATION FOUND OR PLACED.)

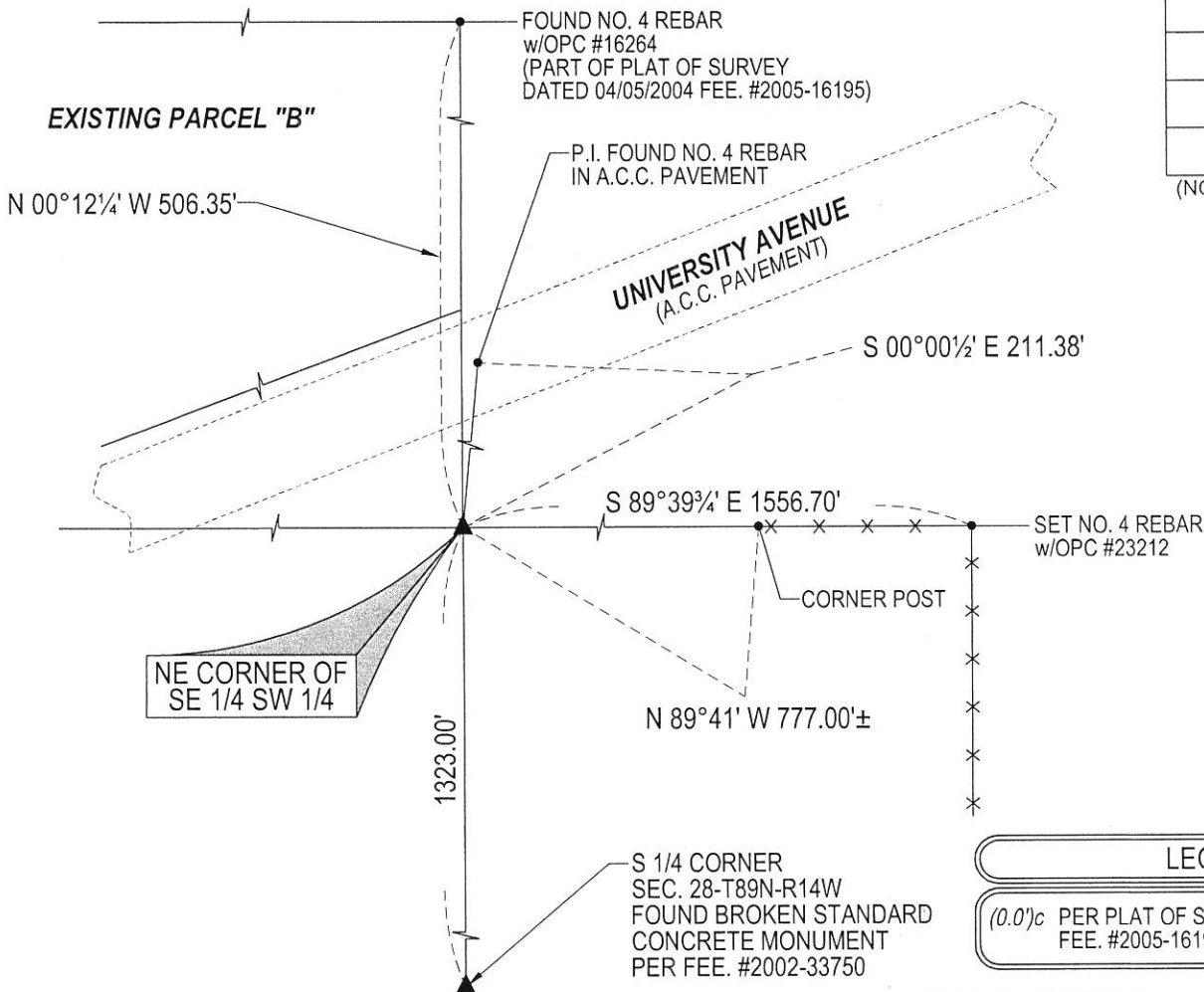
MONUMENT DESCRIPTION AND REMARKS:

NO USPLSCC ON FILE. SURVEY COMPLETED IN THE SE 1/4 OF SEC. 28-T89N-R14W.

→ **NE CORNER SE 1/4 SW 1/4:** NO BLACK HAWK COUNTY ENGINEER TIES AVAILABLE NOR ANY OTHER PUBLIC DOCUMENTATION OF THE HISTORY AND PERPETUATION OF CORNER WAS AVAILABLE. SEARCHED AREA AT APPROXIMATE EXTENSION OF FENCE LINE FROM EAST AND NORTH AND FOUND MULTIPLE PIECES OF OLD FENCING, BARB AND FENCE POSTS, SMALL STONES/P.C.C. FRAGMENTS SCATTERED OVER A 10'Ø CIRCLE. NO OTHER EVIDENCE FOUND. THEREFORE SET NO. 4 REBAR w/OPC #23212 ON LINE BETWEEN SOUTH 1/4 CORNER AND EAST LINE OF PARCEL "B" AND THE EXTENSION OF A BEST FIT LINE OF AN OCCUPIED FENCE LINE EASTERLY OF CORNER. CORNER FALLS WITHIN REASON OF FENCING FRAGMENTS AND GRASS BUFFER SEPARATING AGRICULTURAL LAND AND OWNERSHIP CHANGE.

PLAN VIEW

(SHOW A MINIMUM OF THREE REFERENCE TIES TO DURABLE PHYSICAL OBJECTS, RELEVANT MONUMENTS AND PHYSICAL CONDITIONS THAT WILL ENABLE RECOVERY OF THE CORNER.)



(BEARINGS ARE ASSUMED)



HELLAND ENGINEERING & SURVEYING, LTD.
6109 Chancellor Drive
Cedar Falls, Iowa 50613-6916
(319)-266-0161

BRASS TAG = 4d. NAIL & 13/16"Ø BRASS TAG DRAWN BY: KDA
SHINER = 1"Ø STEEL SHINER w/MASONRY NAIL
OPC = PLASTIC CAP (O=ORANGE, R=RED, Y=YELLOW)
(00)' RECORDED AS FILE NAME: 20-145-52.DWG



I hereby certify that this land surveying document was prepared
and the related survey work was performed by me or under my
direct personal supervision and that I am a duly licensed
Professional Land Surveyor under the laws of the State of Iowa.

Kyle J. Helland
License Number 23212
My license renewal date is December 31, 2021.
All pages or sheets are covered by this seal except:

LIST CORNERS TO BE INDEXED

CORNER	SECTION	TOWNSHIP	RANGE
NE COR. SE 1/4 SW 1/4	28	89N	14W
SE COR. NE 1/4 SW 1/4	28	89N	14W
SW COR. NW 1/4 SE 1/4	28	89N	14W
NW COR. SW 1/4 SE 1/4	28	89N	14W