

* PREPARED BY NICK C. BREWER, SHOFF CONSULTING ENGINEERS, LC, 5106 NORDIC DR., CEDAR FALLS, IOWA 50613 (319) 266-0258

UNITED STATES PUBLIC LAND SURVEY CORNER CERTIFICATE
OF

LAND SURVEY MONUMENTS SITUATED IN SECTION NO. 27, TOWNSHIP NO. 89 NORTH, RANGE NO. 14 WEST, OF THE FIFTH PRINCIPAL MERIDIAN, BLACK HAWK COUNTY, IOWA.
PREVIOUSLY RECORDED IN BOOK N/A ON PAGE N/A IN THE OFFICE OF THE COUNTY RECORDER.
(BOOK, PAGE, DOCUMENT NUMBER, ETC.)

(SHOW REASON FOR PREPARING THIS CERTIFICATE, THE EVIDENCE AND DETAILED PROCEDURES USED IN ESTABLISHING THE CORNER POSITIONS AND MONUMENTATION FOUND OR PLACED.)

MONUMENT DESCRIPTION AND REMARKS: SW CORNER SE 1/4 SE 1/4 OF SECTION 27-89-14 - SET 1/2" REBAR FLUSH WITH VIKING ROAD PAVING.
Researched Black Hawk County Corner Certificates and road records, and City of Cedar Falls Records.
Found no information regarding this corner. Based on the best available evidence, a 1/2" rebar with a yellow cap was set at the midpoint of the line between the S 1/4 corner, and the SE corner of the SE 1/4 SE 1/4.

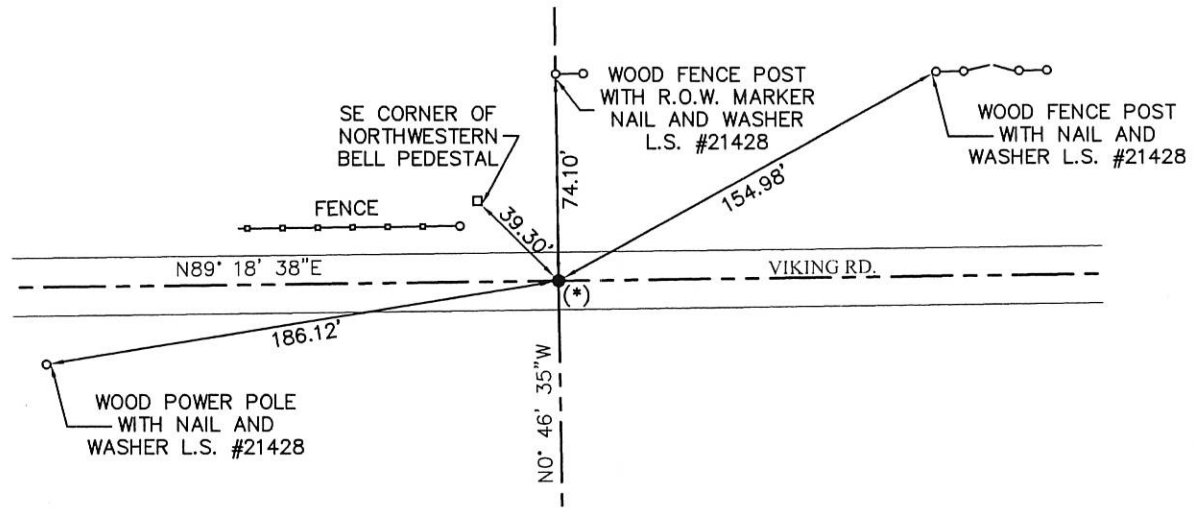
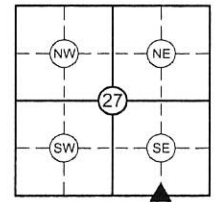
PLAN - VIEW

(SHOW A MINIMUM OF THREE REFERENCE TIES TO DURABLE PHYSICAL OBJECTS, RELEVANT MONUMENTS AND PHYSICAL CONDITIONS THAT WILL ENABLE RECOVERY OF THE CORNER.)

NOT TO SCALE

REFERENCE PLAT DOC. #2014-00013132
SW CORNER SE 1/4 SE 1/4 IN SECTION 27-89-14

(*) SET 1/2" REBAR FLUSH WITH THE SEAL COAT PAVING ON VIKING ROAD.



I HEREBY CERTIFY THAT THIS LAND SURVEYING DOCUMENT WAS PREPARED AND THE RELATED SURVEY WORK WAS PERFORMED BY ME OR UNDER MY DIRECT PERSONAL SUPERVISION AND THAT I AM A DULY LICENSED LAND SURVEYOR UNDER THE LAWS OF THE STATE OF IOWA.

SIGNED: Aaron L. Mueller
AARON L. MUELLER, P.L.S. IOWA LICENSE NO. 21428

DATE: March 18, 2016



MY LICENSE RENEWAL DATE IS DECEMBER 31, 2016.
PAGES OR SHEETS COVERED BY THIS SEAL: THIS PAGE ONLY

LIST CORNERS TO BE INDEXED

CORNER	SECTION	TWP	RANGE
SW CORNER SE 1/4 SE 1/4	27	89	14
NE CORNER NW 1/4 NE 1/4	34	89	14

28-00 VK14