

SC  
MISC  
INDEX  
MARGIN  
PROOF  
COMPARE

BLACK HAWK COUNTY IOWA:SS  
Filed for record OCT 19, 1999 at  
4:00 PM. and recorded in Book 336  
of MISC Page 106.  
Dennis R. Prange Recorder  
FEE 1-5.00/  
PRANGE SURVEYING

9105

RECEIVED - BLACK HAWK CO. ASSESSOR

PREPARED BY: PRANGE SURVEYING, 3304 PANTHER LANE, CEDAR FALLS, IOWA 50613

SLSI 9-94  
CERT 12-98

UNITED STATES PUBLIC LAND SURVEY CORNER CERTIFICATE OF  
Land Survey Monuments situated in Section 26, Township B9 North,  
Range 14 West, of the Fifth Principal Meridian, Black Hawk County, Iowa.  
Previously recorded in Book     , Page     , in County Recorder's Office.

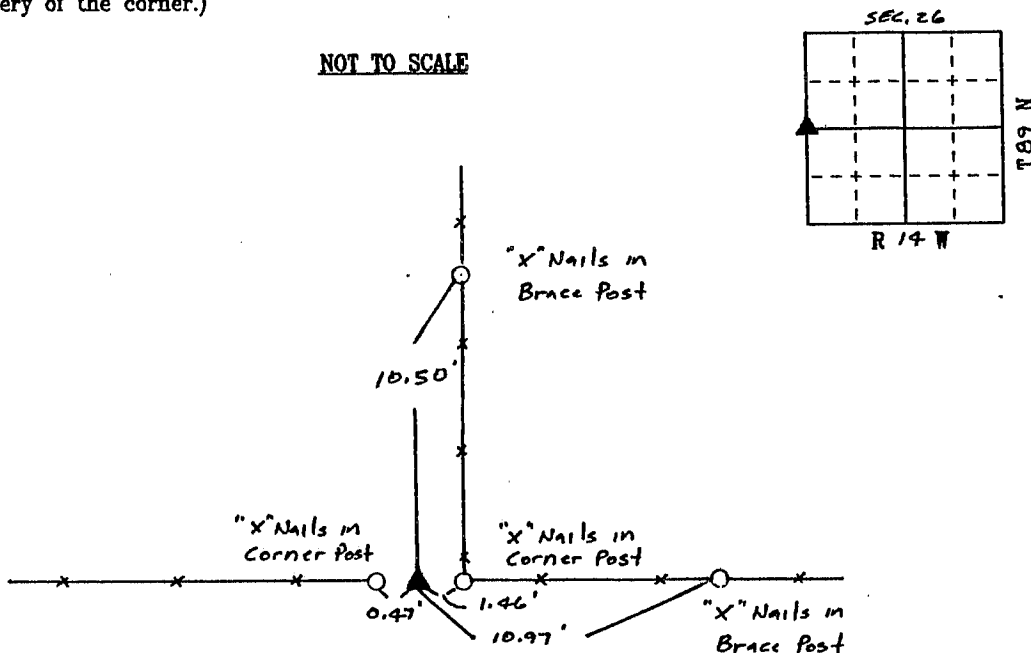
(Show reason for preparing this certificate, the evidence and detailed procedures used in establishing the corner positions and monumentation found or placed.)

Monument Description and Remarks: Found Concrete Monument with  
brass cap 15 inches deep.

### PLAN - VIEW

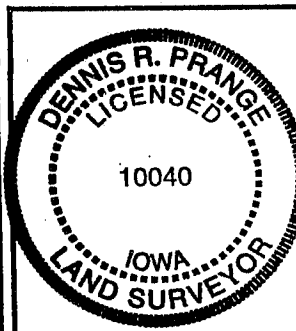
(Show a minimum of three reference ties to durable physical objects, relevant monuments and physical conditions that will enable recovery of the corner.)

NOT TO SCALE



FIELD SURVEY: May 27, 1999  
PREPARED BY: Dennis R. Prange

### CERTIFICATION



I hereby certify that this land surveying document was prepared and the related survey work was performed by me or under my direct personal supervision and that I am a duly licensed Land Surveyor under the laws of the State of Iowa.

Dennis R. Prange Oct. 19, 1999  
(date)

License Number 10040

My license renewal date is December 31, 2000

Pages or sheets covered by this seal:

This Land Corner Certificate Only.

### LIST CORNERS TO BE INDEXED

Corner      Section      - Township      - Range     

W1/4 cor. Sec. 26 - B9 - 14

BOOK 336 PAGE 106