

INDEX  
MARGIN  
PROOF  
COMPARE

PREPARED BY: PRANGE SURVEYING, 3304 PANTHER LANE, CEDAR FALLS, IOWA 50613  
SLSH 9-94  
CERT 12-98

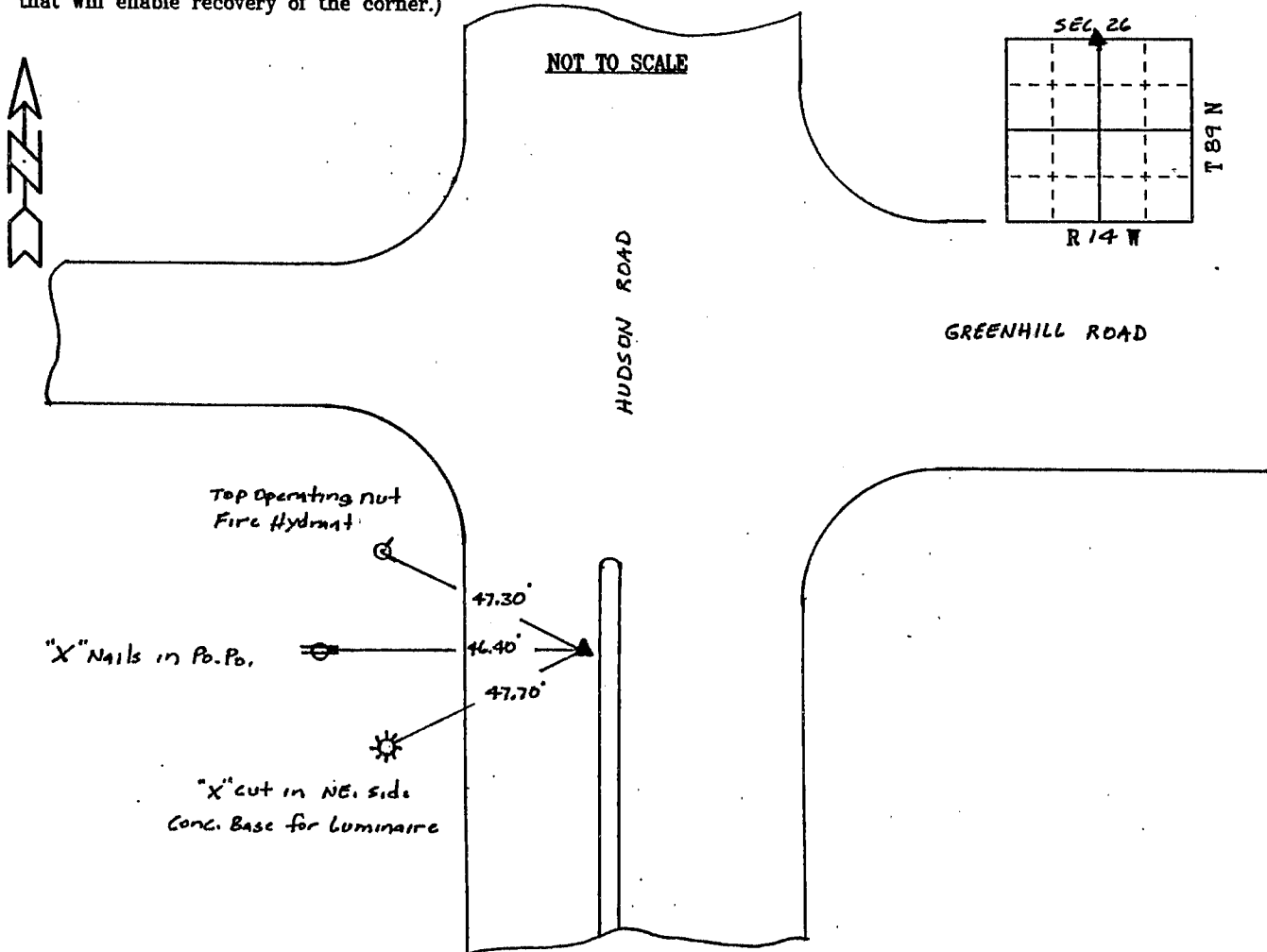
UNITED STATES PUBLIC LAND SURVEY CORNER CERTIFICATE OF  
Land Survey Monuments situated in Section 26, Township 89 North,  
Range 14 West, of the Fifth Principal Meridian, Black Hawk County, Iowa.  
Previously recorded in Book, Page, in County Recorder's Office.

(Show reason for preparing this certificate, the evidence and detailed procedures used in establishing the corner positions and monumentation found or placed.)

Monument Description and Remarks: Found Iron Pin w/cap No. 2697  
in Monument Box.

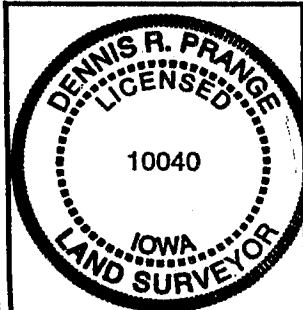
PLAN - VIEW

(Show a minimum of three reference ties to durable physical objects, relevant monuments and physical conditions that will enable recovery of the corner.)



FIELD SURVEY: November, 1999  
PREPARED BY: Dennis R. Prange

CERTIFICATION



I hereby certify that this land surveying document was prepared and the related survey work was performed by me or under my direct personal supervision and that I am a duly licensed Land Surveyor under the laws of the State of Iowa.

Dennis R. Prange December 21, 1999 (date)

License Number 10040  
My license renewal date is December 31, 2000  
Pages or sheets covered by this seal:  
This Land Corner Certificate Only.

LIST CORNERS TO BE INDEXED

Corner Section - Township - Range  
N1/4 Cor. SEC. 26 - T89N - R14W