

Michael R. Fagle, P.L.S.

AECOM, 501 Sycamore St., Suite 222, Waterloo, Iowa 50703

I-319-232-6531

UNITED STATES PUBLIC LAND SURVEY CORNER CERTIFICATE  
OF

Land Survey Monuments situated in Section 26, Township 89 North, Range 14 West, of the Fifth Principal Meridian, BLACK HAWK County, Iowa. Previously recorded in MISC. BOOK 334 PAGE 996 in County Recorder's Office. (Book, Page, Document Number, etc.)

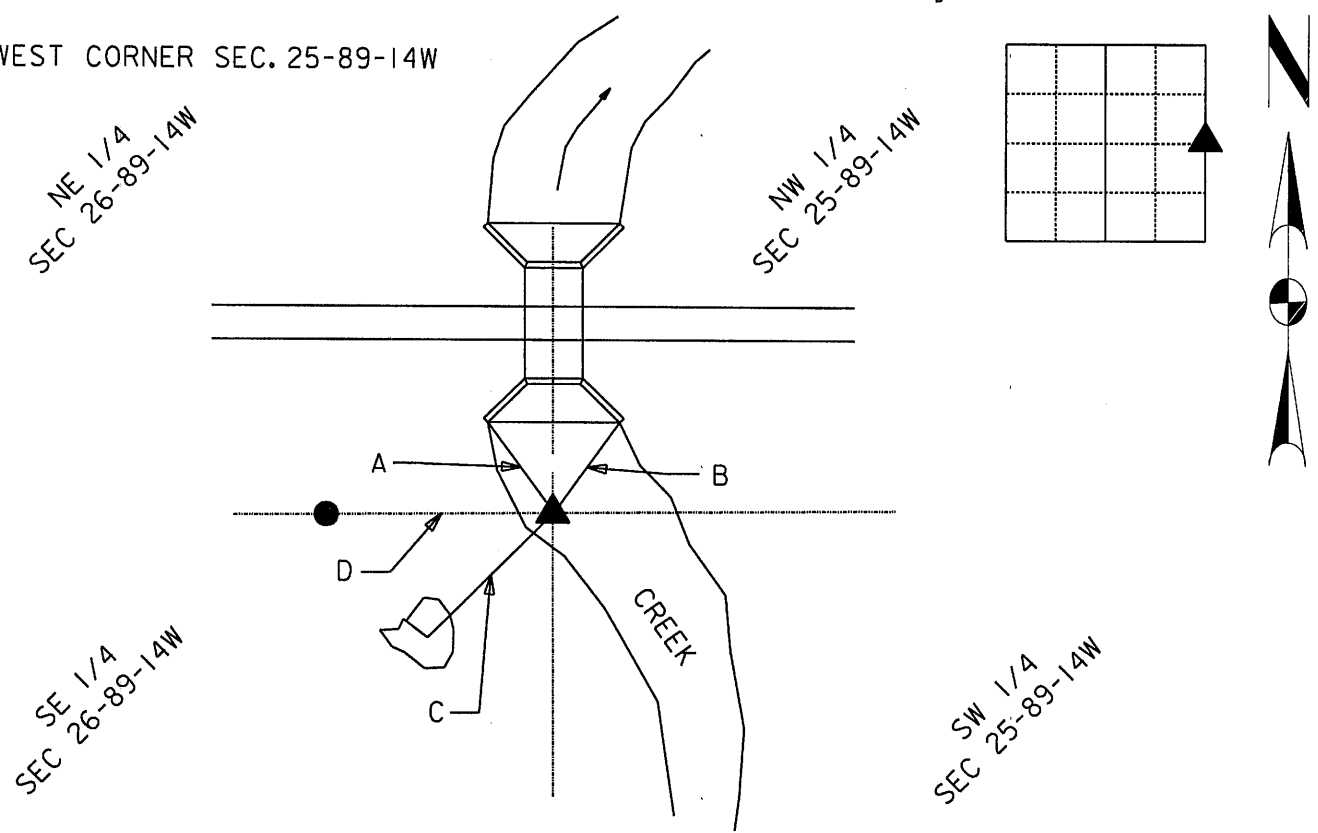
(Show reason for preparing this certificate, the evidence and detailed procedures used in establishing the corner positions and monumentation found or placed.)

Monument Description and Remarks: FOUND 24" X 1/2" RE BAR WITH 2" DIA. ALUMINUM CAP BELOW THE CREEK BED. THE CAP IS MARKED "CASSADY NO. 12532". THE ALUMINUM CAP WAS LOOSE. REFERENCED OUT THE RE BAR AND SET 48" X 1" DIA. PIPE WITH 48" X 1/2" DIA. RE BAR INSIDE PIPE AND REATTACHED FOUND ALUMINUM CAP AND TIED OUT THE CORNER.

PLAN - VIEW

(Show a minimum of three reference ties to durable physical objects, relevant monuments and physical conditions that will enable recovery of the corner.)

ALSO THE WEST CORNER SEC. 25-89-14W



- A - INSIDE CORNER WINGWALL - 13.65' (DIRECT)
- B - INSIDE CORNER WINGWALL - 9.42' (DIRECT)
- C - RED SHINER NO. "CASADY 12532" IN 24" DIA. TREE - 25.00' (PLUMBED)
- D - FND. PROPERTY/RED PLASTIC CAP - 41.36' (PLUMBED) (41.44' RECORD)

	<p>I hereby certify that this Land Surveying document was prepared by me or under my direct personal supervision and that I am a duly Licensed Land Surveyor under the laws of the State of Iowa.</p> <p><i>Michael R. Fagle</i> 12-03-2013 MICHAEL R. FAGLE Date</p> <p>License number 8505</p> <p>My license renewal date is December 31, 2014</p> <p>Pages or sheets covered by this seal: THIS SHEET</p>	List Corners to be Indexed			
		Corners	Section	Twp	Range
	EAST	6	T 89 N	R 14 W	
	ALSO, WEST	5	T 89 N	R 14 W	