

Number: 202400008956
Recorded: 1/16/2024 at 9:20:18.0 AM
County Recording Fee: \$7.00
Iowa E-Filing Fee: \$3.13
Combined Fee: \$10.13
Revenue Tax:
Sandie L. Smith, RECORDER
Black Hawk County, Iowa

Prepared By: Matthew A. Kofta, P.L.S., VJ Engineering, 1501 Technology Parkway, Suite 100, Cedar Falls, Iowa, 50613, (319) 266-5829
Return To: Matthew A. Kofta, P.L.S., VJ Engineering, 1501 Technology Parkway, Suite 100, Cedar Falls, Iowa, 50613, (319) 266-5829

United States Public Land Survey Corner Certificate of

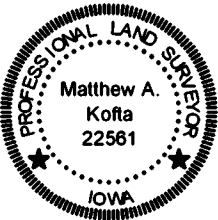
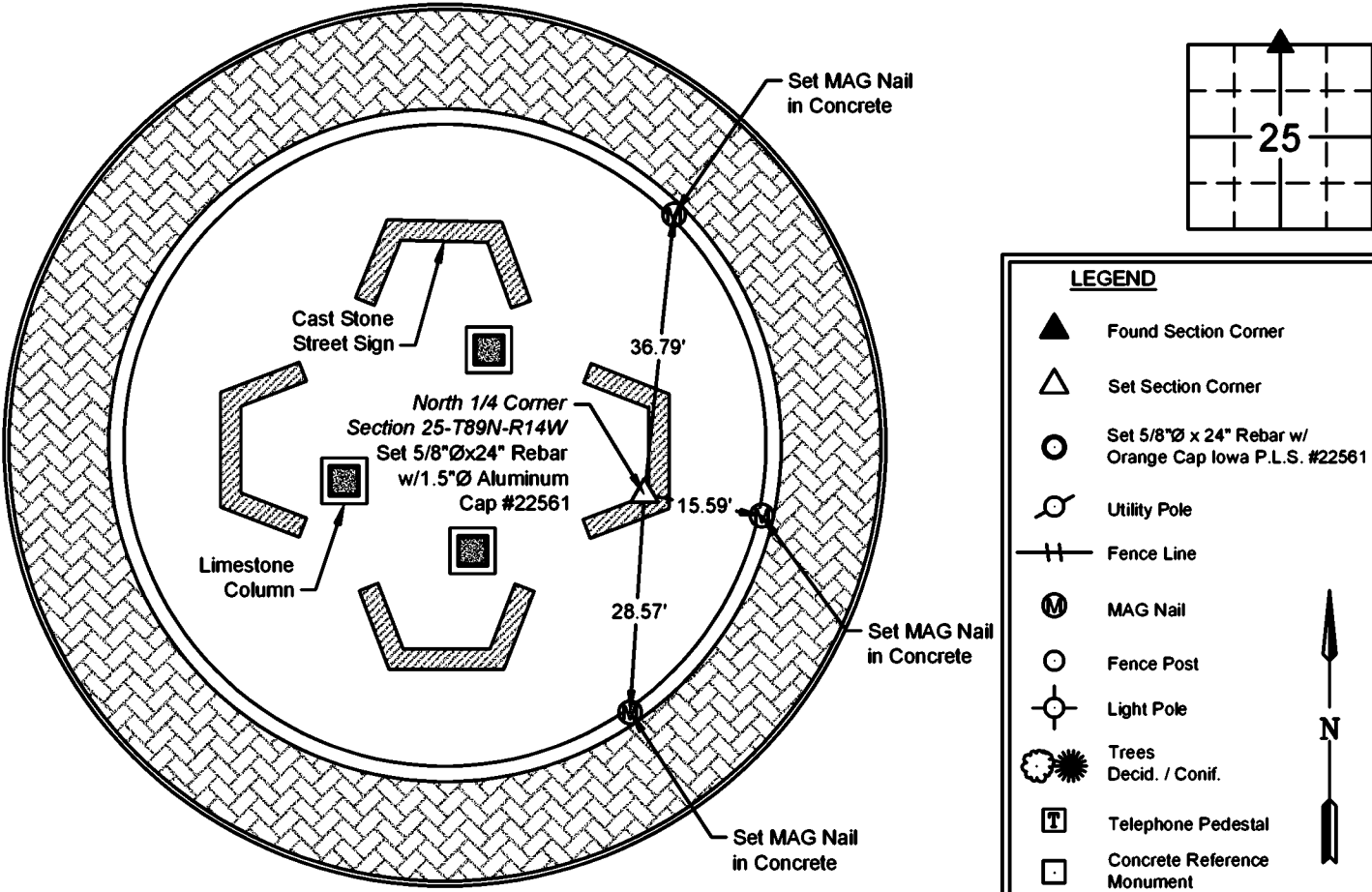
Land Survey Monuments situated in Section No. 25 , Township No. 89 North ,
Range No. 14 West , of the Fifth Principal Meridian, Black Hawk County, Iowa
Previously recorded in Document No. 295 Misc 307

Show reason for preparing this certificate, the evidence and detailed procedures used in establishing the corner positions and monumentation found or placed.

Monument Description and Remarks: North 1/4 -- Section 25-T89N-R14W
Previous corner certificate states that corner is a "X" cut in concrete paving. Took observation on found "X" cut in concrete paving prior to the
Greenhill Road and South Main Street roundabout construction. Set 5/8"x24" rebar with 1.5"Ø Aluminum Cap PLS #22561 at observed location.
This corner certificate is being prepared due to a change in the monument of record and to update the reference ties.

PLAN - VIEW

(Show a minimum of three reference ties to durable physical objects, relevant monuments and physical conditions that will enable recovery of the corner.)



I hereby certify that this land surveying document was prepared and the related survey work was performed by me or under my direct personal supervision and that I am a duly licensed Land Surveyor under the laws of the State of Iowa.

Matthew A. Kofta, P.L.S.
License Number 22561
My license renewal date is December 31, 2024
Pages or sheets covered by this seal: 1 of 1

List Corner to be Indexed

Corner	Section	Twp	Range
North 1/4	25	89N	14W
South 1/4	24	89N	14W



VJ Engineering
1501 Technology Parkway
Cedar Falls, Iowa - 319-266-5829

Section Corner
Reference Ties

file no.
228027
drawn by
MAK
date
01/15/24