

Recorded

SLSI 9-90

# UNITED STATES PUBLIC LAND SURVEY CORNER CERTIFICATE

OF

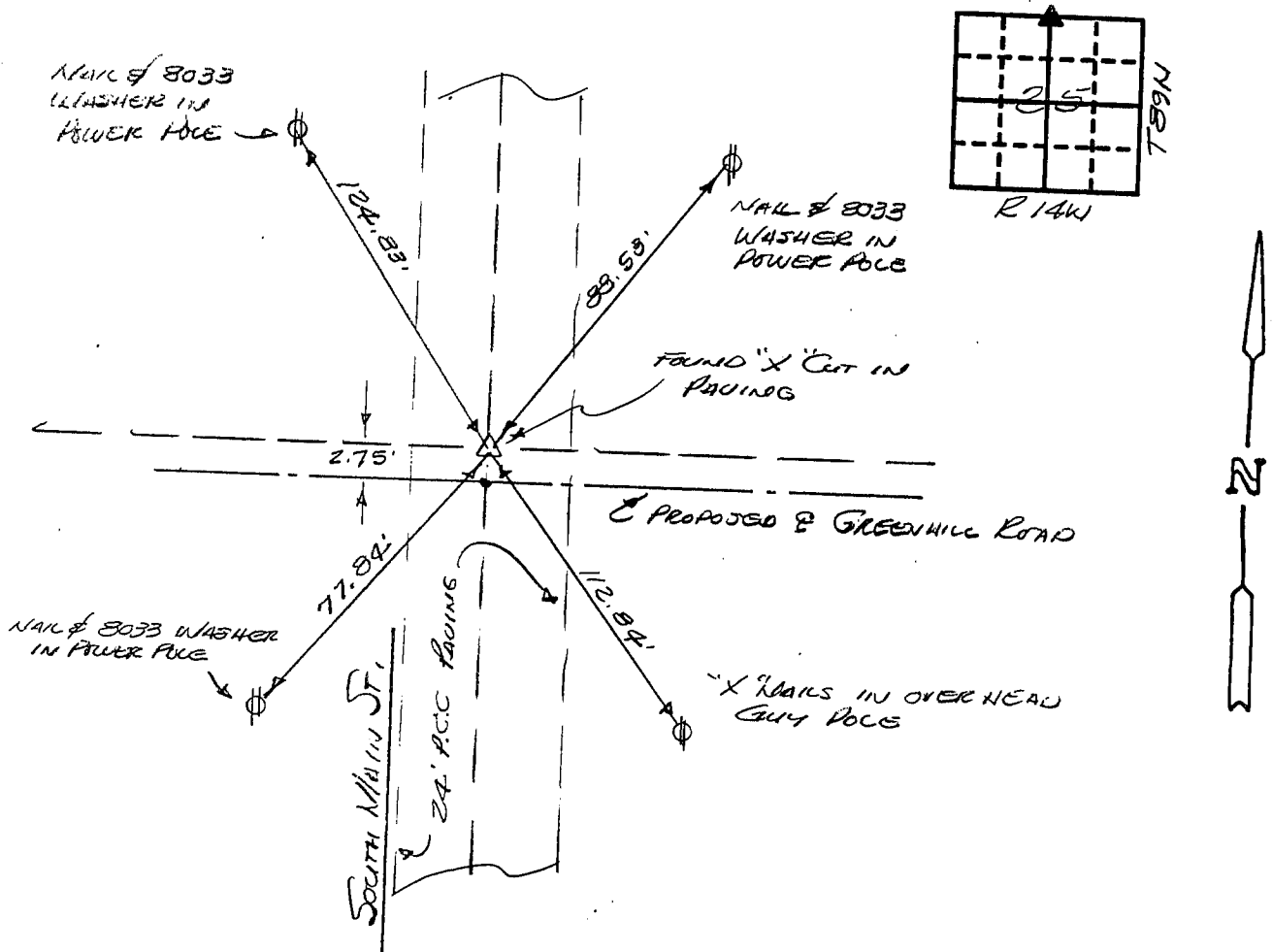
Land Survey Monuments situated in Section 25, Township 89N, Range 14W, of the Fifth Principal Meridian, BLACK HAWK County, Iowa.  
Previously recorded in N/A (book, page, document number, etc.) in County Recorder's Office.

(Show reason for preparing this certificate, the evidence and detailed procedures used in establishing the corner positions and monumentation found or placed.)

Monument Description and Remarks: FOUND "X" CUT IN CONCRETE PAVING PER  
IOWA DOT CORNERSTONE SURVEY F-518-5(900) - 2020-07 (1-30-1980)

## PLAN - VIEW

(Show a minimum of three reference ties to durable physical objects, relevant monuments and physical conditions that will enable recovery of the corner.)



I hereby certify that the survey work was completed and this certificate was prepared by me or under my direct personal supervision and that I am a duly registered land surveyor under the laws of the state of Iowa.

Signature: T. William King  
Name typed or printed: F. WILLIAM KING  
Date: 4-1-1991 Reg. No. 8033



Corners	List Corners to be Indexed	Section	Tw	Range
N 1/4	25	89N	14W	

MISC. BK. 295 p. 307