

PROOF

FILED FOR RECORD APR 22 2003 AT 3:00 P. M. FEE 1-5.00/

COMPARED

*Patricia A. Jess*

BLACK HAWK COUNTY RECORDER

WAYNE CLAASSEN ENGINEERING &amp; SURVEYING INC

WAYNE CLAASSEN ENGINEERING AND SURVEYING, INC.  
P.O. BOX 898 WATERLOO, IOWA 50704-0898PHONE: (VOICE) 319-235-6294  
(FAX) 319-235-0028

## UNITED STATES PUBLIC LAND SURVEY CORNER CERTIFICATE

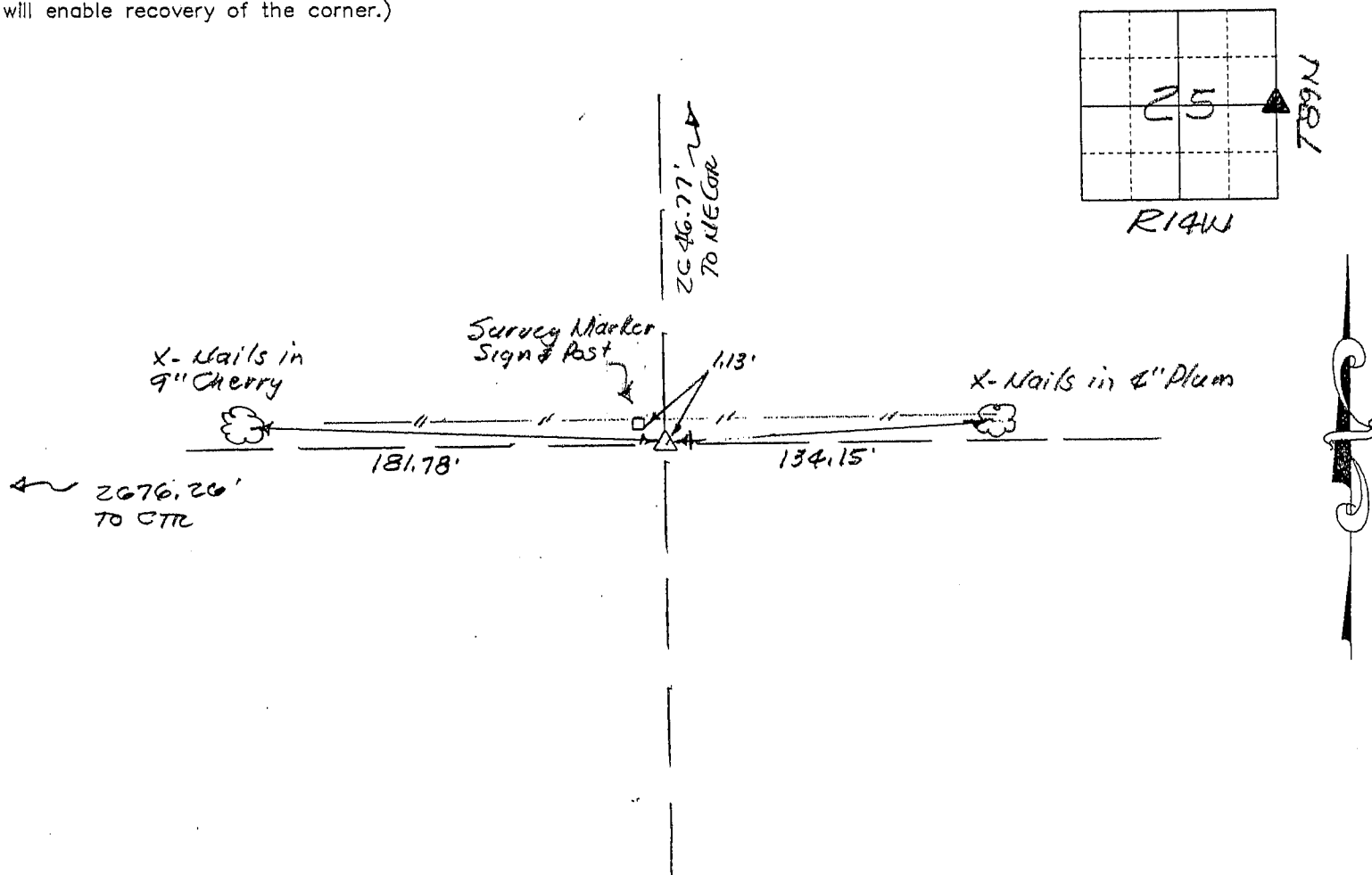
Land Survey Monuments situated in Section 25, Township 89N, Range 14W, of the Fifth Principal Meridian, BLACK HAWK County, Iowa.Previously recorded in N/A in County Recorder's Office.  
(book, page, document number, etc.)

(Show reason for preparing this certificate, the evidence and detailed procedures used in establishing the corner positions and monumentation found or placed.)

Monument Description and Remarks E 1/4 CORNER, found 5CM 6" deep with survey marker sign and post 1' North & Tee post 0.4' East of monument.

## PLAN - VIEW

(Show a minimum of three reference ties to durable physical objects, relevant monuments and physical conditions that will enable recovery of the corner.)



302-55

I hereby certify that the survey work was completed and this certificate was prepared by me or under my direct personal supervision and that I am a duly licensed land surveyor under the laws of the state of Iowa.

Signature: F. William King(Name typed or printed:) F. William KingDate: 4-21-2003Lic. No. 8033

SEAL

## List Corners to be Indexed

Corners	Section	Twp	Range
E 1/4	25	89N	14W

