

FEE BOOK # 2005 08299

PROOF *2* FILED FOR RECORD SEP 30 2004 AT 4:00 P.M. FEE 1-5.00-1.00/

COMPARED

BLACK HAWK COUNTY RECORDER

ENV WAYNE CLAASSEN ENGINEERING &amp; SURVEYING INC

WAYNE CLAASSEN ENGINEERING AND SURVEYING, INC.  
P.O. BOX 898 WATERLOO, IOWA 50704-0898

PHONE: (VOICE) 319-235-6294  
(FAX) 319-235-0028

## UNITED STATES PUBLIC LAND SURVEY CORNER CERTIFICATE

Land Survey Monuments situated in Section 25, Township 89 North, Range 14 West, of the Fifth Principal Meridian, Black Hawk County, Iowa.

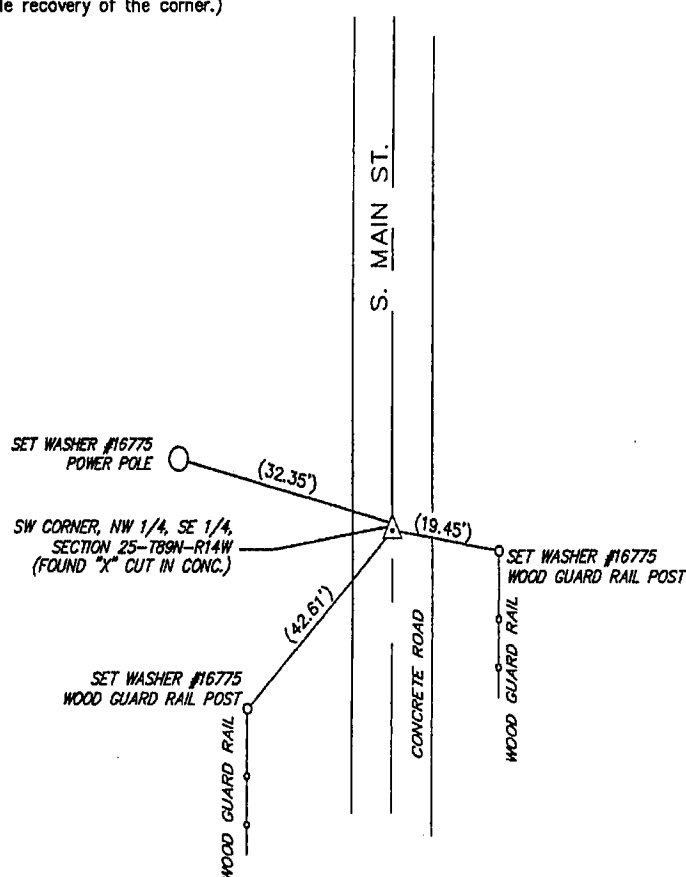
Previously recorded in \_\_\_\_\_ in County Recorder's Office.  
(book, page, document number, etc.)

(Show reason for preparing this certificate, the evidence and detailed procedures used in establishing the corner positions and monumentation found or placed.)

Monument Description and Remarks No certificate on file.

## PLAN - VIEW

(Show a minimum of three reference ties to durable physical objects, relevant monuments and physical conditions that will enable recovery of the corner.)



I hereby certify that the survey work was completed and this certificate was prepared by me or under my direct personal supervision and that I am a duly licensed land surveyor under the laws of the state of Iowa.

Signature: \_\_\_\_\_  
David L. Schell, L.S.

Date: 28 SEPT. 2004 Lic. No. 16775

My license renewal date is December 31st 2004.

SEAL

## List Corners to be Indexed

Corners	Section	Twp	Range
SW CORNER, NW 1/4, SE 1/4,	25	89 N	14 W

