

RESERVED FOR COUNTY RECORDER'S USE:



Doc ID: 009788760001 Type: GEN
Recorded: 03/26/2020 at 11:45:25 AM
Fee Amt: \$7.00 Page 1 of 1
Black Hawk County Iowa
SANDIE L. SMITH RECORDER

File 2020-00016591

City of Cedar Falls

Jeffrey P. Helland, 220 Clay Street, Cedar Falls, Iowa 50613, (319)-268-5173

UNITED STATES PUBLIC LAND SURVEY CORNER CERTIFICATE
OF

LAND SURVEY MONUMENTS SITUATED IN SECTION NO. 24, TOWNSHIP NO. 89 NORTH, RANGE NO. 14
WEST OF THE FIFTH PRINCIPAL MERIDIAN, BLACK HAWK COUNTY, IOWA.

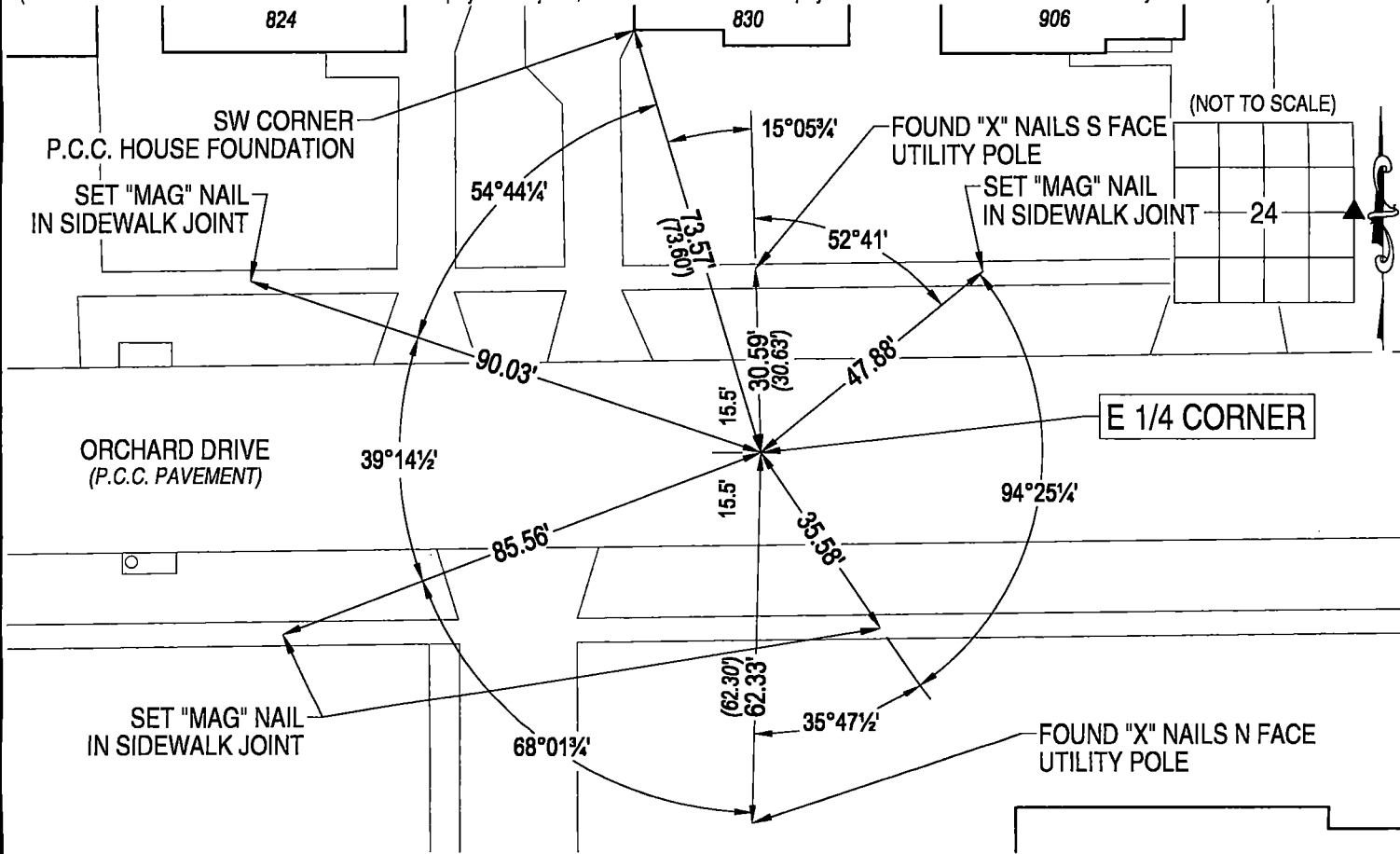
PREVIOUSLY RECORDED IN N/A

(Show reason for preparing this certificate, the evidence and detail procedures used in establishing the corner positions and monumentation found or placed.)
MONUMENT DESCRIPTION AND REMARKS: ORCHARD DRIVE RECONSTRUCTED IN 2010 OBLITERATING ANY MONUMENT MARKING CORNER, NO USPLSCC ON FILE.

E 1/4 CORNER: BLACK HAWK COUNTY ENGINEER REFERENCE TIE CARD DATED 1930 CALLS FOR [FOUND LIME STONE]. BLACK HAWK COUNTY ENGINEER REFERENCE TIE FIELD BOOK (NO DATE) CALLS FOR [CONCRETE MONUMENT]. "KNOLL RIDGE ADDITION" DATED 07/02/1960 REFERENCES CORNER BUT DOES NOT STATE WHAT WAS FOUND OR SET. "KNOLL RIDGE SECOND ADDITION" DATED 11/26/1963 REFERENCES CORNER BUT DOES NOT STATE WHAT WAS FOUND OR SET. IDOT CORNER STONE SURVEY DATED 01/30/1980 CALLS FOR [FOUND X CUT IN PAVEMENT]. ALL THREE IDOT REFERENCE TIES REMAIN INTACT (SW CORNER OF HOUSE AND TWO UTILITY POLES). SET AT BEST FIT ANALYSIS OF THREE REFERENCE TIES AND SAID IDOT CORNER STONE SURVEY (DISTANCES AND ANGLES TO OTHER CORNERS). SET "MAG" NAIL (7/16"Ø HEAD) IN DRILL HOLE IN P.C.C. PAVEMENT 0.05' SOUTH OF CENTERLINE JOINT.

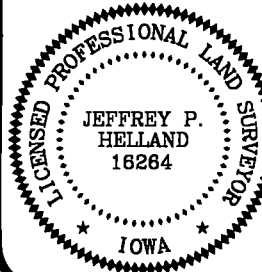
PLAN VIEW

(Show a minimum of three reference ties to durable physical objects, relevant monuments and physical conditions that will enable recovery of the corner.)



DEPARTMENT OF PUBLIC WORKS, ENGINEERING DIVISION
CITY of CEDAR FALLS, IOWA
220 CLAY ST.
CEDAR FALLS, IOWA
50613
(319) 273-8606

OPC = PLASTIC CAP (O=ORANGE,R=RED,Y=YELLOW)
DRAWN BY: JPH
FILE NAME: E CORNER.dwg
(00') RECORDED AS



I hereby certify that this land surveying document was prepared and the related survey work was performed by me or under my direct personal supervision and that I am a duly licensed Land Surveyor under the laws of the State of Iowa.

Jeffrey P. Helland, L.S. Date: 3/10/2020
Iowa License No. 16264
My license renewal date is December 31, 2019.
All Pages or Sheets are covered by this Seal except:

LIST CORNERS TO BE INDEXED

CORNER	SECTION	TOWNSHIP	RANGE
E 1/4 CORNER	24	89N	14W
W 1/4 CORNER	19	89N	13W