

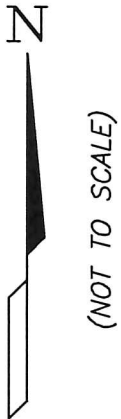
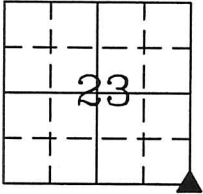
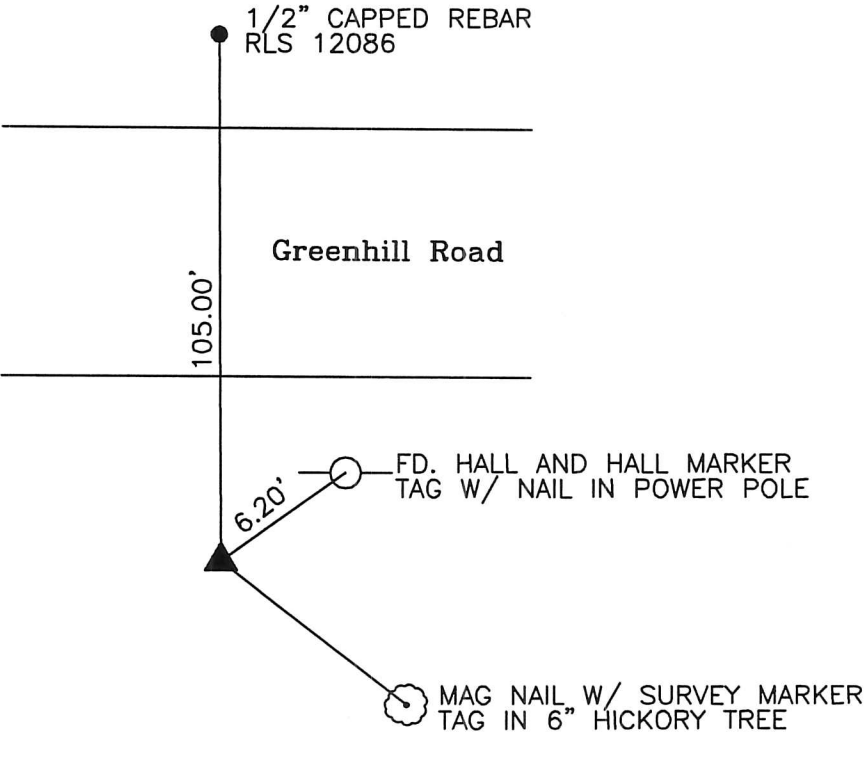
PREPARED BY AND RETURN TO: GREGG E. SAMPSON, AMENT DESIGN, 625 - 32ND AVENUE SW, CEDAR RAPIDS, IA 52404 (319) 378-1401

UNITED STATES PUBLIC LAND SURVEY CORNER CERTIFICATE
OF

Land Survey Monuments situated in Section 23 Township 89 Range 14W
of the Fifth Principal Meridian Blackhawk County, Iowa.
Previously recorded in Book 315 Page 642 in the County Recorder's Office.

Monument Description and Remarks: Fd. Standard W.P.A. monument south of Greenhill Road
pavement per corner certificate Book 315 Page 642. Filing certificate due to record certificate
no longer valid (missing tie or ties).

PLAN - VIEW



I hereby certify that the survey work was completed and this certificate was prepared by me or under my direct personal supervision and that I am a duly licensed land surveyor under the laws of the state of Iowa.

Signature: Gregg E. Sampson
Gregg E. Sampson, Iowa Licensed Land Surveyor No. 14809

Date: 12/17/15 License renewal December 31, 2016

List Corners to be Indexed			
Corners	Section	Twp	Range
SE Cor	23	89	14W

SEAL

