

Doc ID: 004508650001 Type: GEN  
Kind: CORNER  
Recorded: 07/01/2011 at 11:08:26 AM  
Fee Amt: \$7.00 Page 1 of 1  
Black Hawk County Iowa  
JUDITH A MCCARTHY RECORDER  
File **2012-00000081**

**ENW** WAYNE CLAASSEN ENGINEERING AND SURVEYING, INC.  
P.O. BOX 898 WATERLOO, IOWA 50704-0898

PHONE: (VOICE) 319-235-6294  
(FAX) 319-235-0028

UNITED STATES PUBLIC LAND SURVEY CORNER CERTIFICATE

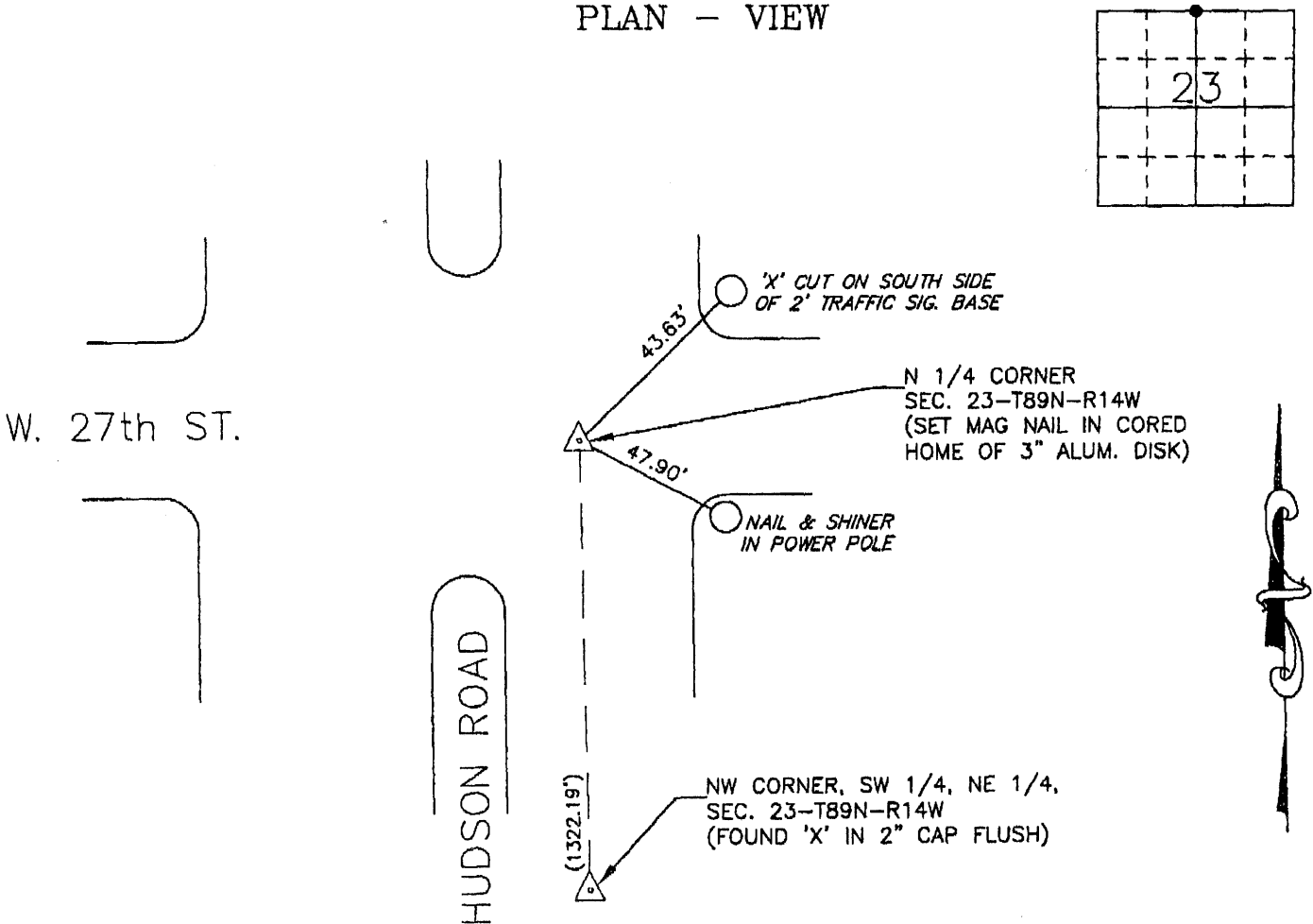
Land Survey Monuments situated in Section 23, Township 89 North, Range 14 West, of the Fifth Principal Meridian, Black Hawk County, Iowa.

Previously recorded in DOC. No. 2007-08748 in County Recorder's Office.  
(book, page, document number, etc.)

Monument Description and Remarks

Set Mag nail on cored hole of 3" aluminum cap in the centerline of the North bound lane of Hudson Road as per ties from above referenced tie sheet. This certificate was filed because the corner monument was modified and one of the reference ties was missing.

PLAN - VIEW



BK 682-33

I hereby certify that this land surveying document was prepared and the related survey work was performed by me or under my direct personal supervision and that I am a duly Licensed Land Surveyor under the laws of the State of Iowa.

Signature: David L. Schell

David L. Schell, L.S.

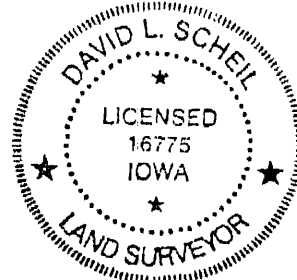
Date: JUNE 30, 2011 Lic. No. 16775

Pages or Sheets Covered by this Seal: THIS SHEET ONLY.

My license renewal date is December 31, 2012

List Corners to be Indexed

Corners	Section	Twp	Range
N 1/4 CORNER,	23	89 N	14 W
S 1/4 CORNER,	14	89 N	14 W



SEAL

✓31.00 KDW  
17.00