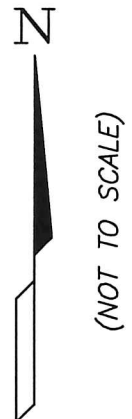
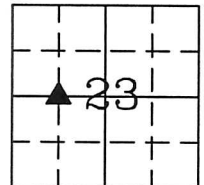
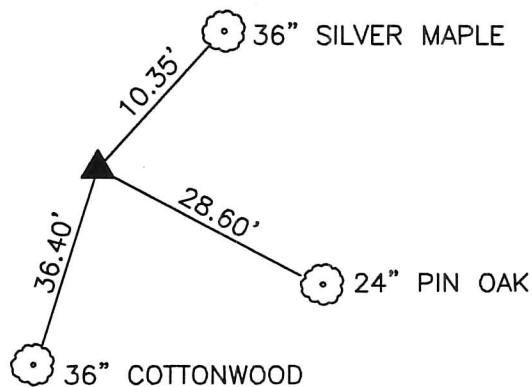


PREPARED BY AND RETURN TO: GREGG E. SAMPSON, AMENT DESIGN, 625 - 32ND AVENUE SW, CEDAR RAPIDS, IA 52404 (319) 378-1401

UNITED STATES PUBLIC LAND SURVEY CORNER CERTIFICATE
OF

Land Survey Monuments situated in Section 23 Township 89 Range
14W of the Fifth Principal Meridian Blackhawk County, Iowa.
Previously recorded in _____ in the County Recorder's Office.
Monument Description and Remarks: Fd. 1/2" Rebar w/ Cap #3641 Certificate being
filed due to no previous certificate on Record.

PLAN - VIEW

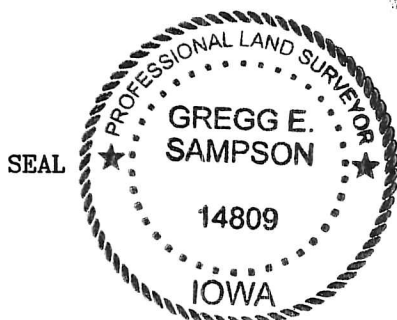


ALL TIES ARE MAG NAIL W/
SURVEY MARKER DISC

I hereby certify that the survey work was completed and this certificate was prepared by me or under my direct personal supervision and that I am a duly licensed land surveyor under the laws of the state of Iowa.

Signature: Gregg E. Sampson
Gregg E. Sampson, Iowa Licensed Land Surveyor No. 14809

Date: 12/17/15 License renewal December 31, 2016



List Corners to be Indexed

Corners	Section	Twp	Range
NE Cor NW1/4 SW1/4	23	89	14W