

PREPARED BY AND RETURN TO: GREGG E. SAMPSON, AMENT DESIGN, 625 - 32ND AVENUE SW, CEDAR RAPIDS, IA 52404 (319) 378-1401

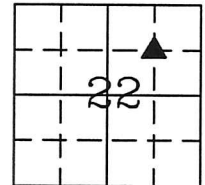
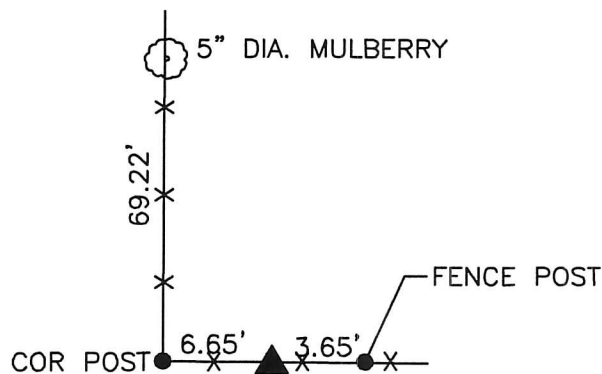
UNITED STATES PUBLIC LAND SURVEY CORNER CERTIFICATE
OF

Land Survey Monuments situated in Section 22 Township 89 Range 14W of the Fifth Principal Meridian Blackhawk County, Iowa.

Previously recorded in _____ in the County Recorder's Office.

Monument Description and Remarks: Fd. 1/2" capped rebar #8033. Filing certificate due to no previous certifiicate on file.

PLAN - VIEW



ALL TIES ARE MAG NAIL W/
SURVEY MARKER DISC

I hereby certify that the survey work was completed and this certificate was prepared by me or under my direct personal supervision and that I am a duly licensed land surveyor under the laws of the state of Iowa.

Signature: Gregg E. Sampson
Gregg E. Sampson, Iowa Licensed Land Surveyor No. 14809

Date: 12/17/15 License renewal December 31, 2016

List Corners to be Indexed			
Corners	Section	Twp	Range
SW Cor	22	89	14W
NE1/4 NE1/4			

