

UNITED STATES PUBLIC LAND SURVEY CORNER CERTIFICATE

OF

Land Survey Monuments situated in Section 22, Township 39N, Range 14W, of the Fifth Principal Meridian, BLACK HAWK County, Iowa. Previously recorded in N/A in County Recorder's Office.

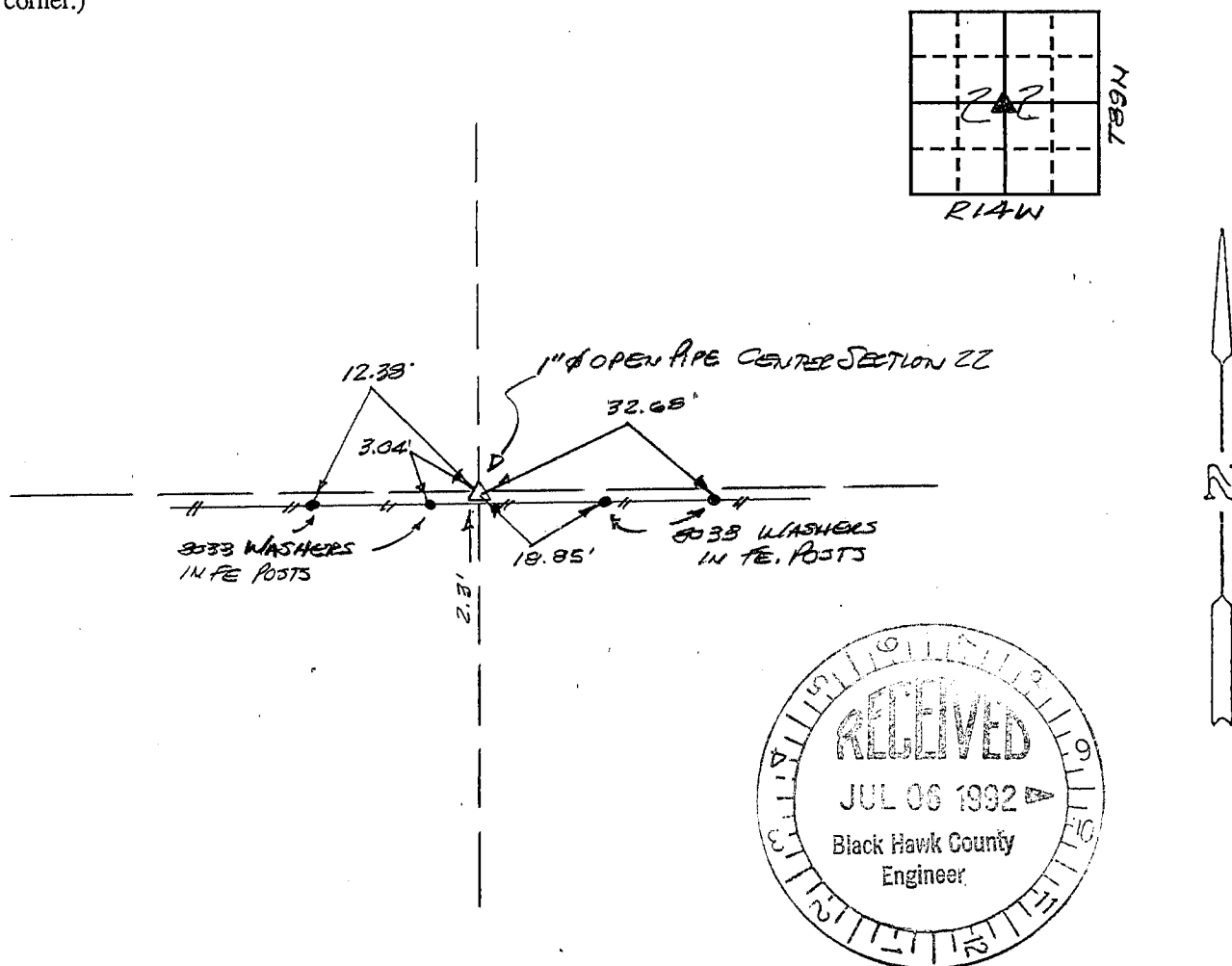
(book, page, document number, etc.)

Show reason for preparing this certificate, the evidence and detailed procedures used in establishing the corner positions and monumentation found or placed.)

Monument Description and Remarks: FOUND 1" Ø OPEN PIPE 1.4' DEEP WITHIN 0.10' OF
COMPUTED SPLIT POINT USING 1/4 LINE INTERSECTION.

PLAN - VIEW

(Show a minimum of three reference ties to durable physical objects, relevant monuments and physical conditions that will enable recovery of the corner.)



352-39

I hereby certify that the survey work was completed and this certificate was prepared by me or under my direct personal supervision and that I am a duly registered land surveyor under the laws of the state of Iowa.

Signature: F. William KingName typed or printed: F. WILLIAM KINGDate: 6-29-1992Reg. No. 8033

List Corners to be Indexed

Corners	Section	Twp	Range
CENTER	22	39N	14W

SEAL



MISC. BK. 301 p. 924