



Doc ID: 007178620001 Type: GEN
Recorded: 10/19/2016 at 10:49:09 AM
Fee Amt: \$7.00 Page 1 of 1
Black Hawk County Iowa
SANDIE L. SMITH RECORDER

File 2017-00007495

Reserved for County Recorder's use.

Kyle J. Helland, 1107 Technology Parkway, Cedar Falls, Iowa 50613-6951, (319)-266-0161

UNITED STATES PUBLIC LAND SURVEY CORNER CERTIFICATE OF

LAND SURVEY MONUMENTS SITUATED IN SECTION NO. 21, TOWNSHIP NO. 89 NORTH, RANGE
NO. 14 WEST OF THE FIFTH PRINCIPAL MERIDIAN, BLACK HAWK COUNTY, IOWA.
PREVIOUSLY RECORDED IN 301 MISC. 928.

(SHOW REASON FOR PREPARING THIS CERTIFICATE, THE EVIDENCE AND DETAILED PROCEDURES USED IN ESTABLISHING THE
CORNER POSITIONS AND MONUMENTATION FOUND OR PLACED.)

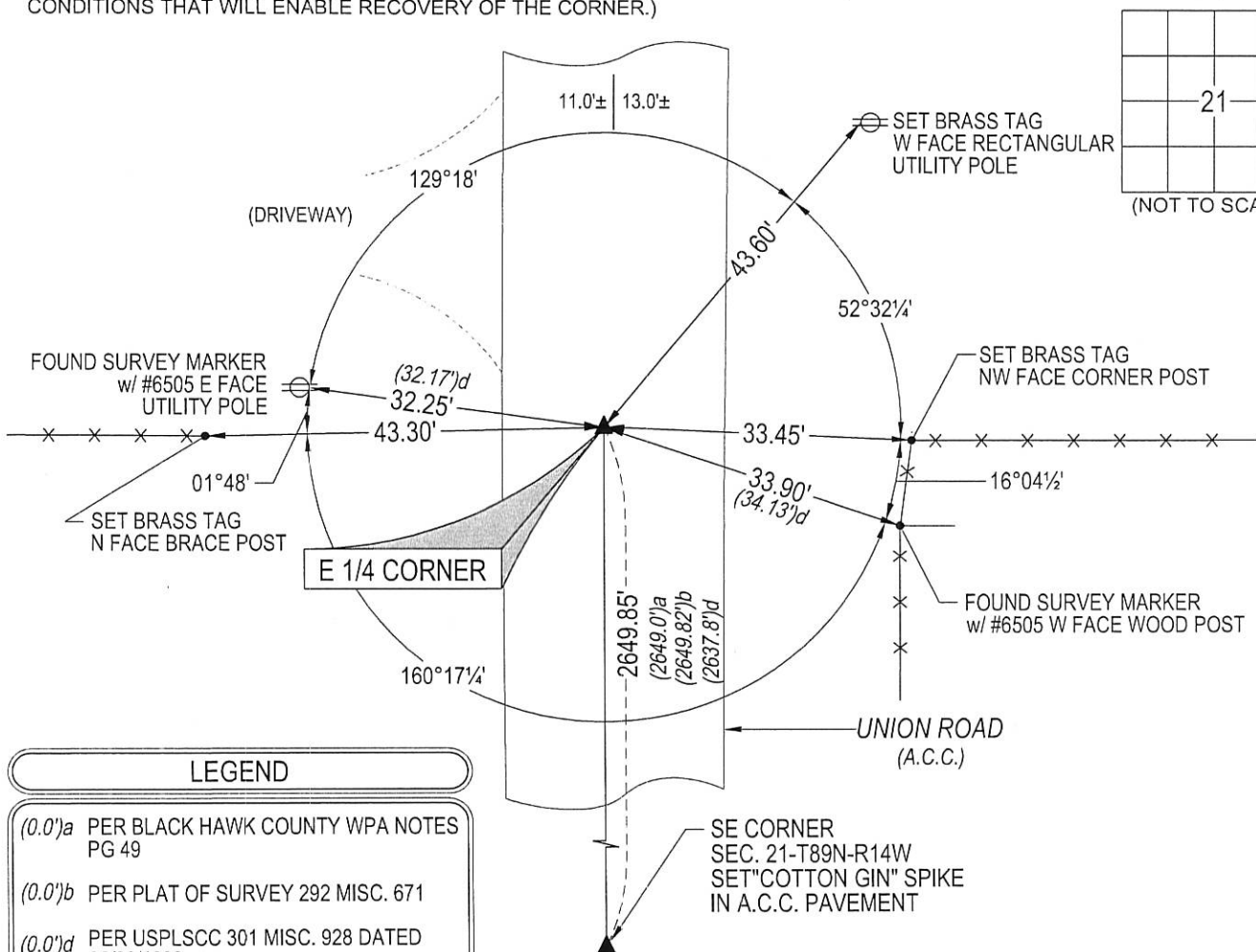
MONUMENT DESCRIPTION AND REMARKS:

ONLY TWO REFERENCE TIES REMAINING. SURVEY COMPLETED IN THE SE 1/4 OF SEC. 21-T89N-R14W.

→ **E 1/4 CORNER:** BLACK HAWK COUNTY ENGINEER W.P.A. NOTES PG 49 CALLS FOR [FOUND GRADE STAKE 1 X
3 X 16 TAPERED C/M SET.]. USPLSCC 301 MISC. 928 CALLS FOR [FOUND 1/2"Ø REBAR USING COUNTY TIES.
NOTE THAT WPA TIE TO NW COR IS 2641.5' (CHAINED 1939) CURRENT EDM DIST = 2637.8']. SEARCHED AREA
FOUND NO. 4 REBAR IN A.C.C. PAVEMENT (0.4' DEEP).

PLAN VIEW

(SHOW A MINIMUM OF THREE REFERENCE TIES TO DURABLE PHYSICAL OBJECTS, RELEVANT MONUMENTS AND PHYSICAL
CONDITIONS THAT WILL ENABLE RECOVERY OF THE CORNER.)



LEGEND

- (0.0')a PER BLACK HAWK COUNTY WPA NOTES PG 49
- (0.0')b PER PLAT OF SURVEY 292 MISC. 671
- (0.0')d PER USPLSCC 301 MISC. 928 DATED 06/23/1992

(BEARINGS ARE ASSUMED)



HELLAND ENGINEERING & SURVEYING, LTD.
1107 Technology Parkway
Cedar Falls, Iowa 50613-6951
(319)-266-0161

SHINER = 8d. NAIL & 1 5/16"Ø METAL SHINER DRAWN BY: SMN
BRASS TAG = 8d. NAIL & 13/16"Ø BRASS TAG
OPC = PLASTIC CAP (O=ORANGE, R=RED, Y=YELLOW)
(00') RECORDED AS FILE NAME: 16-196-22.DWG



I hereby certify that this land surveying document was prepared
and the related survey work was performed by me or under my
direct personal supervision and that I am a duly licensed
Professional Land Surveyor under the laws of the State of Iowa.

Kyle J. Helland
License Number 23212
My license renewal date is December 31, 2017.
All pages or sheets are covered by this seal except:

LIST CORNERS TO BE INDEXED

CORNER	SECTION	TOWNSHIP	RANGE
E 1/4 CORNER	21	89N	14W
W 1/4 CORNER	22	89N	14W